

TRAPPC5 Polyclonal Antibody

| | |
|------------------------------|---|
| Catalog No : | YT4729 |
| Reactivity : | Human;Mouse;Rat |
| Applications : | IHC;IF;ELISA |
| Target : | TRAPPC5 |
| Gene Name : | TRAPPC5 |
| Protein Name : | Trafficking protein particle complex subunit 5 |
| Human Gene Id : | 126003 |
| Human Swiss Prot No : | Q8IUR0 |
| Mouse Gene Id : | 66682 |
| Mouse Swiss Prot No : | Q9CQA1 |
| Immunogen : | Synthesized peptide derived from the Internal region of human TRAPPC5. |
| Specificity : | TRAPPC5 Polyclonal Antibody detects endogenous levels of TRAPPC5 protein. |
| Formulation : | Liquid in PBS containing 50% glycerol, 0.5% BSA and 0.02% sodium azide. |
| Source : | Polyclonal, Rabbit,IgG |
| Dilution : | IHC 1:100 - 1:300. ELISA: 1:5000.. IF 1:50-200 |
| Purification : | The antibody was affinity-purified from rabbit antiserum by affinity-chromatography using epitope-specific immunogen. |
| Concentration : | 1 mg/ml |
| Storage Stability : | -15°C to -25°C/1 year(Do not lower than -25°C) |

Molecularweight : 21kD

Background : function:May play a role in vesicular transport from endoplasmic reticulum to Golgi.,similarity:Belongs to the TRAPP small subunits family. BET3 subfamily.,subunit:Part of the multisubunit TRAPP (transport protein particle) complex.,

Function : function:May play a role in vesicular transport from endoplasmic reticulum to Golgi.,similarity:Belongs to the TRAPP small subunits family. BET3 subfamily.,subunit:Part of the multisubunit TRAPP (transport protein particle) complex.,

Subcellular Location : Golgi apparatus, cis-Golgi network . Endoplasmic reticulum .

Expression : Skin,

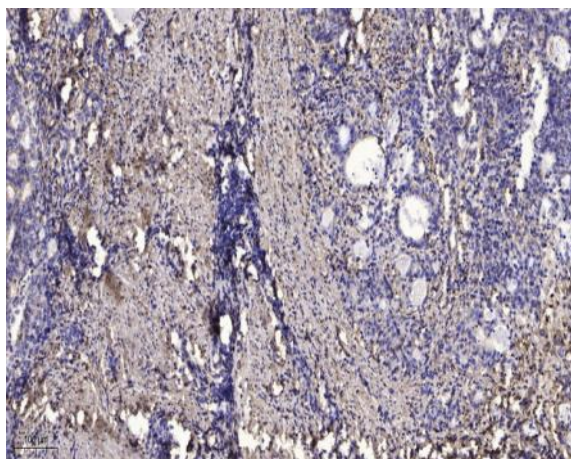
Sort : 23507

No4 : 1

Host : Rabbit

Modifications : Unmodified

Products Images



Immunohistochemical analysis of paraffin-embedded human Gastric adenocarcinoma. 1, Antibody was diluted at 1:200(4° overnight). 2, Tris-EDTA,pH9.0 was used for antigen retrieval. 3,Secondary antibody was diluted at 1:200(room temperature, 45min).