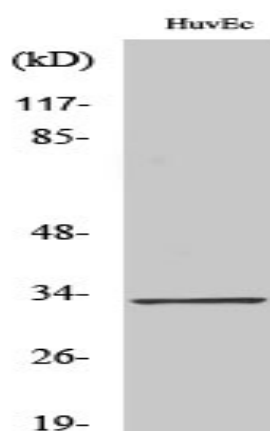


## Tra-2 $\alpha$ Polyclonal Antibody

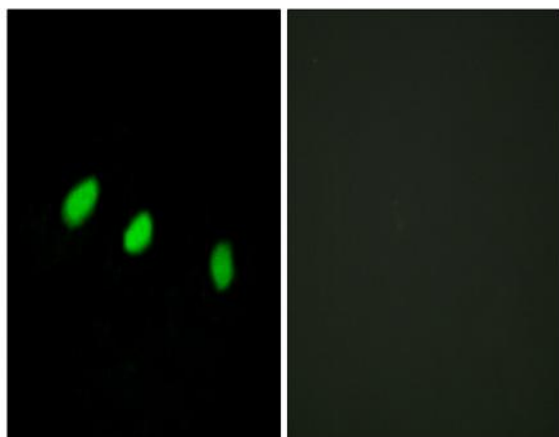
|                              |   |
|------------------------------|---|
| <b>Catalog No :</b>          | YT4713  |
| <b>Reactivity :</b>          | Human;Mouse   |
| <b>Applications :</b>        | WB;IHC;IF;ELISA   |
| <b>Target :</b>              | Tra-2 $\alpha$  |
| <b>Fields :</b>              | >>Spliceosome;>>Alcoholic liver disease   |
| <b>Gene Name :</b>           | TRA2A   |
| <b>Protein Name :</b>        | Transformer-2 protein homolog alpha   |
| <b>Human Gene Id :</b>       | 29896   |
| <b>Human Swiss Prot No :</b> | Q13595  |
| <b>Mouse Swiss Prot No :</b> | Q6PFR5  |
| <b>Immunogen :</b>           | The antiserum was produced against synthesized peptide derived from human TRA-2 alpha. AA range:221-270               |
| <b>Specificity :</b>         | Tra-2 $\alpha$ Polyclonal Antibody detects endogenous levels of Tra-2 $\alpha$ protein.                               |
| <b>Formulation :</b>         | Liquid in PBS containing 50% glycerol, 0.5% BSA and 0.02% sodium azide.   |
| <b>Source :</b>              | Polyclonal, Rabbit,IgG  |
| <b>Dilution :</b>            | WB 1:500 - 1:2000. IHC 1:100 - 1:300. IF 1:200 - 1:1000. ELISA: 1:20000. Not yet tested in other applications.        |
| <b>Purification :</b>        | The antibody was affinity-purified from rabbit antiserum by affinity-chromatography using epitope-specific immunogen. |
| <b>Concentration :</b>       | 1 mg/ml   |
| <b>Storage Stability :</b>   | -15°C to -25°C/1 year(Do not lower than -25°C)  |

|                               |   |
|-------------------------------|---|
| <b>Observed Band :</b>        | 33kD  |
| <b>Cell Pathway :</b>         | Spliceosome;  |
| <b>Background :</b>           | This gene is a member of the transformer 2 homolog family and encodes a protein with several RRM (RNA recognition motif) domains. This phosphorylated nuclear protein binds to specific RNA sequences and plays a role in the regulation of pre-mRNA splicing. Alternatively spliced transcript variants have been found for this gene. [provided by RefSeq, Sep 2013], |
| <b>Function :</b>             | function:Sequence-specific RNA-binding protein which participates in the control of pre-mRNA splicing.,PTM:Phosphorylated in the RS domains.,similarity:Belongs to the splicing factor SR family.,similarity:Contains 1 RRM (RNA recognition motif) domain.,subunit:Binds to A3 enhancer proteins SRp75, SRp55, SRp40 and SRp30.,                                       |
| <b>Subcellular Location :</b> | Nucleus .   |
| <b>Expression :</b>           | Cervix carcinoma,Epithelium,Hepatocyte,Lung,Testis,Uterus,  |
| <b>Sort :</b>                 | 23466   |
| <b>No4 :</b>                  | 1   |
| <b>Host :</b>                 | Rabbit  |
| <b>Modifications :</b>        | Unmodified  |

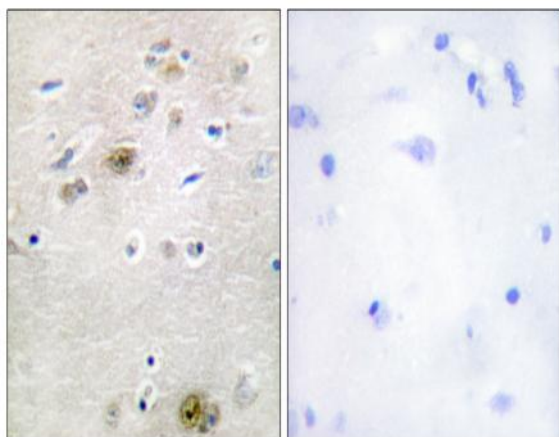
## Products Images



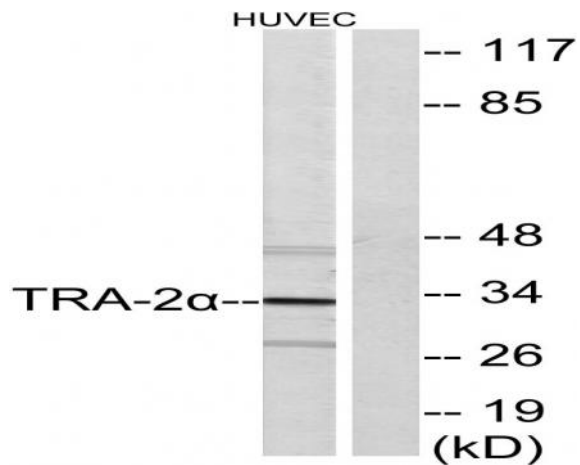
Western Blot analysis of various cells using Tra-2 $\alpha$  Polyclonal Antibody diluted at 1:500. Secondary antibody(catalog#:RS0002) was diluted at 1:20000 cells nucleus extracted by Minute TM Cytoplasmic and Nuclear Fractionation kit (SC-003, Invent biotech, MN, USA).



Immunofluorescence analysis of HeLa cells, using TRA-2 alpha Antibody. The picture on the right is blocked with the synthesized peptide.



Immunohistochemistry analysis of paraffin-embedded human brain tissue, using TRA-2 alpha Antibody. The picture on the right is blocked with the synthesized peptide.



Western blot analysis of lysates from HUVEC cells, using TRA-2 alpha Antibody. The lane on the right is blocked with the synthesized peptide.