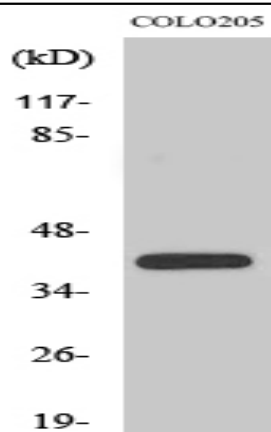


## XPA Polyclonal Antibody

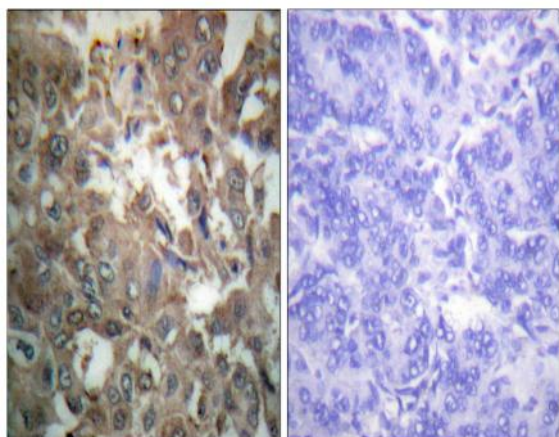
<b>Catalog No :</b>	YT4914
<b>Reactivity :</b>	Human;Mouse
<b>Applications :</b>	WB;IHC;IF;ELISA
<b>Target :</b>	XPA
<b>Fields :</b>	>>Platinum drug resistance;>>Nucleotide excision repair
<b>Gene Name :</b>	XPA
<b>Protein Name :</b>	DNA repair protein complementing XP-A cells
<b>Human Gene Id :</b>	7507
<b>Human Swiss Prot No :</b>	P23025
<b>Mouse Gene Id :</b>	22590
<b>Mouse Swiss Prot No :</b>	Q64267
<b>Immunogen :</b>	The antiserum was produced against synthesized peptide derived from human XPA. AA range:211-260
<b>Specificity :</b>	XPA Polyclonal Antibody detects endogenous levels of XPA protein.
<b>Formulation :</b>	Liquid in PBS containing 50% glycerol, 0.5% BSA and 0.02% sodium azide.
<b>Source :</b>	Polyclonal, Rabbit,IgG
<b>Dilution :</b>	WB 1:500 - 1:2000. IHC 1:100 - 1:300. ELISA: 1:10000.. IF 1:50-200
<b>Purification :</b>	The antibody was affinity-purified from rabbit antiserum by affinity-chromatography using epitope-specific immunogen.
<b>Concentration :</b>	1 mg/ml

<b>Storage Stability :</b>	-15°C to -25°C/1 year(Do not lower than -25°C)
<b>Observed Band :</b>	40kD
<b>Cell Pathway :</b>	Nucleotide excision repair;
<b>Background :</b>	This gene encodes a zinc finger protein involved in DNA excision repair. The encoded protein is part of the NER (nucleotide excision repair) complex which is responsible for repair of UV radiation-induced photoproducts and DNA adducts induced by chemical carcinogens. Mutations in this gene are associated with xeroderma pigmentosum complementation group A. Alternatively spliced transcript variants have been found for this gene. [provided by RefSeq, Mar 2009],
<b>Function :</b>	disease:Defects in XPA are a cause of xeroderma pigmentosum complementation group A (XP-A) [MIM:278700]; also known as xeroderma pigmentosum type 1 (XP1). XP-A is a rare human autosomal recessive disease characterized by solar sensitivity, high predisposition for developing cancers on areas exposed to sunlight and, in some cases, neurological abnormalities. Group A patients show the most severe skin symptoms and progressive neurological disorders.,function:Involved in DNA excision repair. Initiates repair by binding to damaged sites with various affinities, depending on the photoproduct and the transcriptional state of the region. Required for UV-induced CHK1 phosphorylation and the recruitment of CEP164 to cyclobutane pyrimidine dimmers (CPD), sites of DNA damage after UV irradiation.,PTM:Phosphorylated upon DNA damage, probably by ATM or ATR.,similarity:Belongs to the XPA family.,subun
<b>Subcellular Location :</b>	Nucleus .
<b>Expression :</b>	Expressed in various cell lines and in skin fibroblasts.
<b>Tag :</b>	hot
<b>Sort :</b>	24349
<b>No4 :</b>	1
<b>Host :</b>	Rabbit
<b>Modifications :</b>	Unmodified

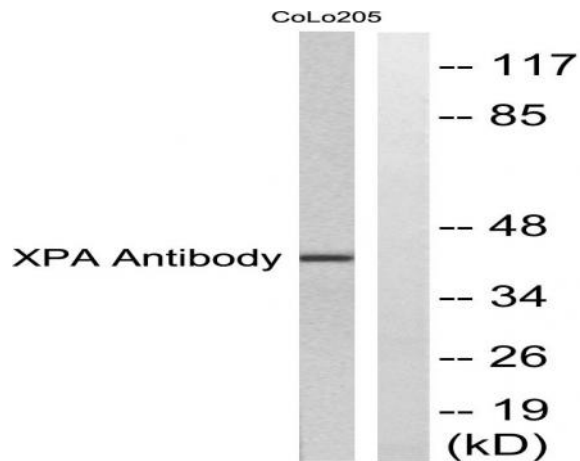
## Products Images



Western Blot analysis of various cells using XPA Polyclonal Antibody diluted at 1:500. Secondary antibody(catalog#:RS0002) was diluted at 1:20000 cells nucleus extracted by Minute TM Cytoplasmic and Nuclear Fractionation kit (SC-003, Inventbiotech, MN, USA).



Immunohistochemistry analysis of paraffin-embedded human breast carcinoma tissue, using XPA Antibody. The picture on the right is blocked with the synthesized peptide.



Western blot analysis of lysates from COLO205 cells, using XPA Antibody. The lane on the right is blocked with the synthesized peptide.