

TOK-1 Polyclonal Antibody

Catalog No :	YT4694
Reactivity :	Human;Mouse
Applications :	WB;ELISA
Target :	TOK-1
Gene Name :	BCCIP
Protein Name :	BRCA2 and CDKN1A-interacting protein
Human Gene Id :	56647
Human Swiss Prot No :	Q9P287
Mouse Swiss Prot No :	Q9CWI3
Immunogen :	Synthesized peptide derived from TOK-1 . at AA range: 60-140
Specificity :	TOK-1 Polyclonal Antibody detects endogenous levels of TOK-1 protein.
Formulation :	Liquid in PBS containing 50% glycerol, 0.5% BSA and 0.02% sodium azide.
Source :	Polyclonal, Rabbit,IgG
Dilution :	WB 1:500 - 1:2000. ELISA: 1:5000. Not yet tested in other applications.
Purification :	The antibody was affinity-purified from rabbit antiserum by affinity-chromatography using epitope-specific immunogen.
Concentration :	1 mg/ml
Storage Stability :	-15°C to -25°C/1 year(Do not lower than -25°C)
Observed Band :	35kD

Background : This gene product was isolated on the basis of its interaction with BRCA2 and p21 proteins. It is an evolutionarily conserved nuclear protein with multiple interacting domains. The N-terminal half shares moderate homology with regions of calmodulin and M-calpain, suggesting that it may also bind calcium. Functional studies indicate that this protein may be an important cofactor for BRCA2 in tumor suppression, and a modulator of CDK2 kinase activity via p21. This protein has also been implicated in the regulation of BRCA2 and RAD51 nuclear focus formation, double-strand break-induced homologous recombination, and cell cycle progression. Multiple transcript variants encoding different isoforms have been described for this gene. [provided by RefSeq, Jul 2008],

Function : developmental stage:Isoform 1 is expressed throughout the cell cycle while isoform 2 is expressed following mitosis and peaks in the G1/S phase of the cell cycle.,function:May promote cell cycle arrest by enhancing the inhibition of CDK2 activity by CDKN1A. May be required for repair of DNA damage by homologous recombination in conjunction with BRCA2. May not be involved in non-homologous end joining (NHEJ).,miscellaneous:HT1080 cells that constitutively express low levels of BCCIP display increased levels of spontaneous single-stranded DNA and double-strand breaks.,similarity:Belongs to the BCP1 family.,subcellular location:Colocalizes with BRCA2 in discrete nuclear foci.,subunit:Interacts with BRCA2, CDKN1A and MTDH/LYRIC.,tissue specificity:Expressed at high levels in testis and skeletal muscle and at lower levels in brain, heart, kidney, liver, lung, ovary, pancreas, placenta, and sp

Subcellular Location : Nucleus . Cytoplasm, cytoskeleton, microtubule organizing center, centrosome, centriole . Cytoplasm, cytoskeleton, spindle pole . Colocalizes with BRCA2 in discrete nuclear foci (PubMed:15713648). In interphase, preferential localizes to the mother centriole (PubMed:28394342). Recruited to the spindle pole matrix and centrosome by microtubules and dynein/dynactin activity (PubMed:28394342). .; [Isoform 1]: Cytoplasm, cytoskeleton, microtubule organizing center, centrosome . Cytoplasm, cytoskeleton, spindle pole . Isoform 1/beta tends to be less abundant at, and less strongly associated with, centrosomes than isoform 2/alpha. .; [Isoform 2]: Cytoplasm, cytoskeleton, microtubule organizing center, centrosome . Cytoplasm, cytoskeleton, spindle pole . Isoform 2/alpha tends to be more abundant

Expression : Expressed at high levels in testis and skeletal muscle and at lower levels in brain, heart, kidney, liver, lung, ovary, pancreas, placenta, and spleen.

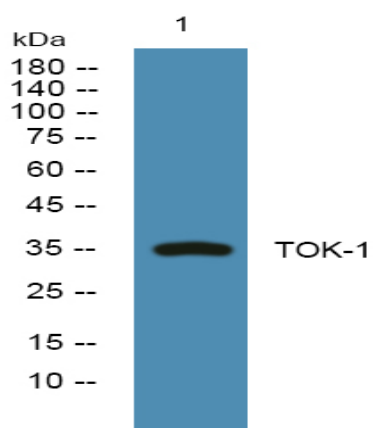
Sort : 17271

No4 : 1

Host : Rabbit

Modifications : Unmodified

Products Images



Western blot analysis of lysates from KB cells, primary antibody was diluted at 1:1000, 4 ° over night