

WAVE4 Polyclonal Antibody

Catalog No :	YT4900
Reactivity :	Human;Rat;Mouse;
Applications :	IHC;IF;ELISA
Target :	WAVE4
Gene Name :	WASF4
Protein Name :	Putative Wiskott-Aldrich syndrome protein family member 4
Human Gene Id :	644739
Human Swiss Prot No :	Q8IV90
Immunogen :	The antiserum was produced against synthesized peptide derived from human WASF4. AA range:190-239
Specificity :	WAVE4 Polyclonal Antibody detects endogenous levels of WAVE4 protein.
Formulation :	Liquid in PBS containing 50% glycerol, 0.5% BSA and 0.02% sodium azide.
Source :	Polyclonal, Rabbit,IgG
Dilution :	IHC 1:100 - 1:300. ELISA: 1:10000.. IF 1:50-200
Purification :	The antibody was affinity-purified from rabbit antiserum by affinity-chromatography using epitope-specific immunogen.
Concentration :	1 mg/ml
Storage Stability :	-15°C to -25°C/1 year(Do not lower than -25°C)
Observed Band :	68kD
Background :	WASF4P (WAS protein family member 4, pseudogene) is a pseudogene belonging to the family of genes encoding Wiskott-Aldrich syndrome (WAS)

proteins, which are involved in the transmission of signals to the actin cytoskeleton. Wiskott-Aldrich syndrome is a disease of the immune system. This pseudogene, which is apparently not transcribed, most closely resembles WASF4P encoding the WAS protein family member 2, which is located on chromosome 1.

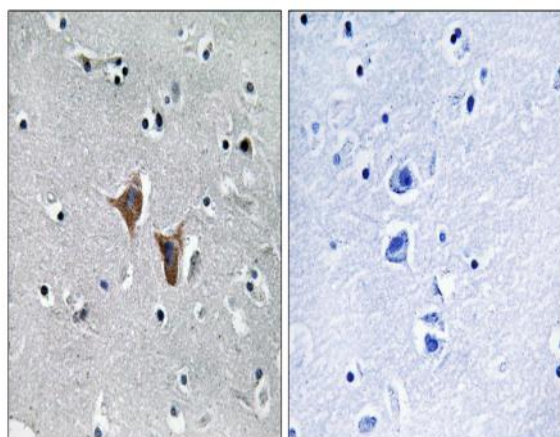
Sort : 24246

No4 : 1

Host : Rabbit

Modifications : Unmodified

Products Images



Immunohistochemistry analysis of paraffin-embedded human brain, using WASF4 Antibody. The picture on the right is blocked with the synthesized peptide.