

WAVE1 Polyclonal Antibody

Catalog No :	YT4897
Reactivity :	Human;Mouse;Rat
Applications :	WB;IHC;IF;ELISA
Target :	WAVE1
Fields :	>>Adherens junction;>>Fc gamma R-mediated phagocytosis;>>Regulation of actin cytoskeleton;>>Bacterial invasion of epithelial cells;>>Pathogenic Escherichia coli infection;>>Shigellosis;>>Choline metabolism in cancer
Gene Name :	WASF1
Protein Name :	Wiskott-Aldrich syndrome protein family member 1
Human Gene Id :	8936
Human Swiss Prot No :	Q92558
Mouse Gene Id :	83767
Mouse Swiss Prot No :	Q8R5H6
Rat Gene Id :	294568
Rat Swiss Prot No :	Q5BJU7
Immunogen :	The antiserum was produced against synthesized peptide derived from human WAVE1. AA range:91-140
Specificity :	WAVE1 Polyclonal Antibody detects endogenous levels of WAVE1 protein.
Formulation :	Liquid in PBS containing 50% glycerol, 0.5% BSA and 0.02% sodium azide.
Source :	Polyclonal, Rabbit,IgG
Dilution :	WB 1:500 - 1:2000. IHC 1:100 - 1:300. IF 1:200 - 1:1000. ELISA: 1:40000. Not

yet tested in other applications.

Purification : The antibody was affinity-purified from rabbit antiserum by affinity-chromatography using epitope-specific immunogen.

Concentration : 1 mg/ml

Storage Stability : -15°C to -25°C/1 year(Do not lower than -25°C)

Observed Band : 70kD

Cell Pathway : Adherens_Junction;Fc gamma R-mediated phagocytosis;Regulates Actin and Cytoskeleton;

Background : The protein encoded by this gene, a member of the Wiskott-Aldrich syndrome protein (WASP)-family, plays a critical role downstream of Rac, a Rho-family small GTPase, in regulating the actin cytoskeleton required for membrane ruffling. It has been shown to associate with an actin nucleation core Arp2/3 complex while enhancing actin polymerization in vitro. Wiskott-Aldrich syndrome is a disease of the immune system, likely due to defects in regulation of actin cytoskeleton. Multiple alternatively spliced transcript variants encoding the same protein have been found for this gene. [provided by RefSeq, Jul 2008],

Function : domain: Binds the Arp2/3 complex through the C-terminal region and actin through verprolin homology (VPH) domain.,function: Downstream effector molecules involved in the transmission of signals from tyrosine kinase receptors and small GTPases to the actin cytoskeleton.,similarity: Belongs to the SCAR/WAVE family.,similarity: Contains 1 WH2 domain.,subcellular location: Dot-like pattern in the cytoplasm. Concentrated in Rac-regulated membrane-ruffling areas.,subunit: Component of the WAVE1 complex composed of ABI2, CYFIP2, C3orf10/HSPC300, NCKAP1 and WASF1/WAVE1. CYFIP2 binds to activated RAC1 which causes the complex to dissociate, releasing activated WASF1. The complex can also be activated by NCK1 (By similarity). Binds actin and the Arp2/3 complex. Interacts with BAIAP2.,tissue specificity: Highly expressed in brain. Lowly expressed in testis, ovary, colon, kidney, pancreas, thymus, small in

Subcellular Location : Cytoplasm, cytoskeleton . Cell junction, synapse . Cell junction, focal adhesion . Dot-like pattern in the cytoplasm. Concentrated in Rac-regulated membrane-ruffling areas (PubMed:9889097). Partial translocation to focal adhesion sites might be mediated by interaction with SORBS2 (PubMed:18559503). In neurons, colocalizes with activated NTRK2 after BDNF addition in endocytic sites through the association with TMEM108 (By similarity). .

Expression : Highly expressed in brain. Lowly expressed in testis, ovary, colon, kidney, pancreas, thymus, small intestine and peripheral blood.

orthogonal

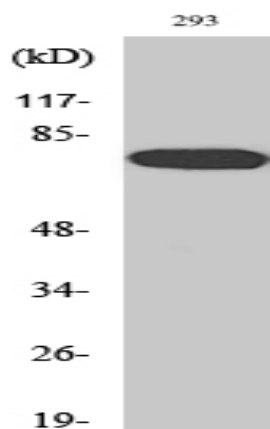
Sagt:: 1264

No4 : 1

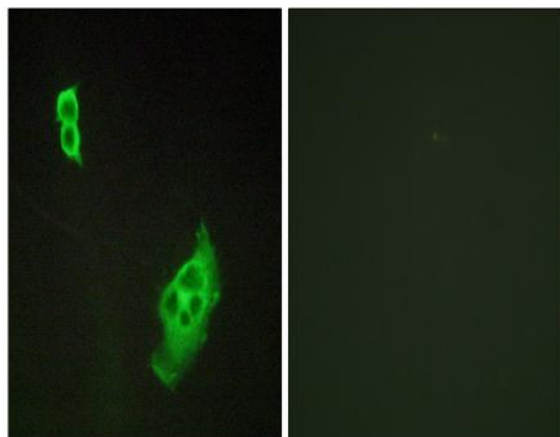
Host : Rabbit

Modifications : Unmodified

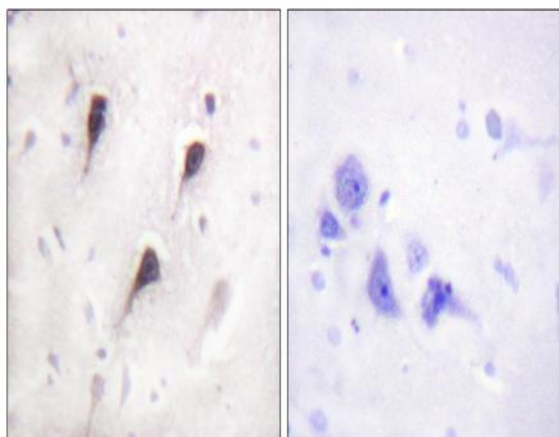
Products Images



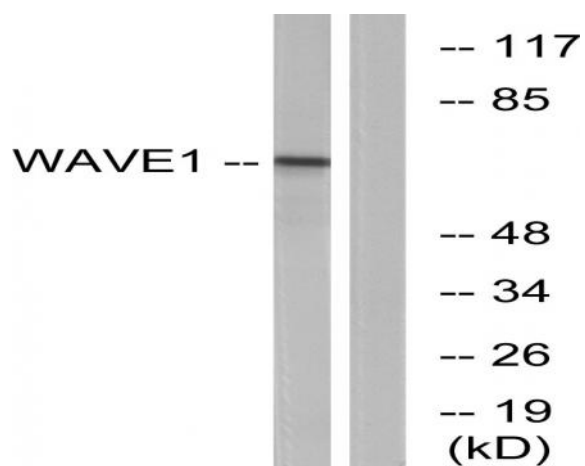
Western Blot analysis of various cells using WAVE1 Polyclonal Antibody. Secondary antibody(catalog#:RS0002) was diluted at 1:20000



Immunofluorescence analysis of COS7 cells, using WAVE1 Antibody. The picture on the right is blocked with the synthesized peptide.



Immunohistochemistry analysis of paraffin-embedded human brain tissue, using WAVE1 Antibody. The picture on the right is blocked with the synthesized peptide.



Western blot analysis of lysates from 293 cells, treated with insulin 0.01U/ml 15', using WAVE1 Antibody. The lane on the right is blocked with the synthesized peptide.