

TMEM16A Polyclonal Antibody

Catalog No :	YT4679
Reactivity :	Human;Mouse;
Applications :	IF;ELISA
Target :	TMEM16A
Gene Name :	ANO1
Protein Name :	Anoctamin-1
Human Gene Id :	55107
Human Swiss Prot No :	Q5XXA6
Mouse Swiss Prot No :	Q8BHY3
Immunogen :	The antiserum was produced against synthesized peptide derived from human TM16A. AA range:921-970
Specificity :	TMEM16A Polyclonal Antibody detects endogenous levels of TMEM16A protein.
Formulation :	Liquid in PBS containing 50% glycerol, 0.5% BSA and 0.02% sodium azide.
Source :	Polyclonal, Rabbit,IgG
Dilution :	IF 1:200 - 1:1000. ELISA: 1:20000. Not yet tested in other applications.
Purification :	The antibody was affinity-purified from rabbit antiserum by affinity-chromatography using epitope-specific immunogen.
Concentration :	1 mg/ml
Storage Stability :	-15°C to -25°C/1 year(Do not lower than -25°C)
Molecularweight :	114kD

Background : domain:The region spanning the fifth and sixth transmembrane domains probably forms the pore-forming region.,function:Acts as a calcium-activated chloride channel. Required for normal tracheal development.,similarity:Belongs to the anoctamin family.,tissue specificity:Broadly expressed with higher levels in liver and skeletal muscle.,

Function : domain:The region spanning the fifth and sixth transmembrane domains probably forms the pore-forming region.,function:Acts as a calcium-activated chloride channel. Required for normal tracheal development.,similarity:Belongs to the anoctamin family.,tissue specificity:Broadly expressed with higher levels in liver and skeletal muscle.,

Subcellular Location : Cell membrane ; Multi-pass membrane protein . Cytoplasm . Cytoplasmic localization seen in neoplastic cells of head and neck squamous cell carcinoma (HNSCC) tumors. .

Expression : Broadly expressed with higher levels in liver, skeletal muscle and gastrointestinal muscles.

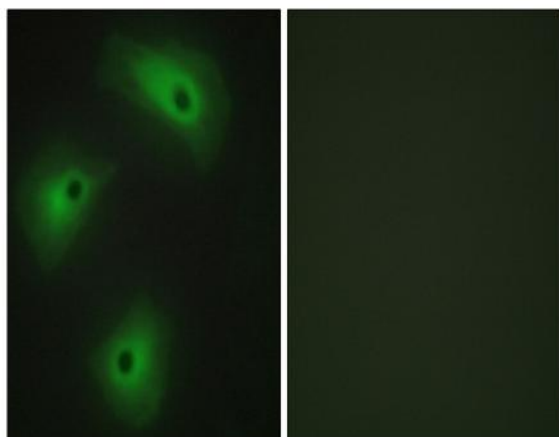
Sort : 17232

No4 : 1

Host : Rabbit

Modifications : Unmodified

Products Images



Immunofluorescence analysis of HeLa cells, using TM16A Antibody. The picture on the right is blocked with the synthesized peptide.