

**TM4SF1 Polyclonal Antibody**

<b>Catalog No :</b>	YT4675
<b>Reactivity :</b>	Human;Mouse
<b>Applications :</b>	IHC;IF;ELISA
<b>Target :</b>	TM4SF1
<b>Gene Name :</b>	TM4SF1
<b>Protein Name :</b>	Transmembrane 4 L6 family member 1
<b>Human Gene Id :</b>	4071
<b>Human Swiss Prot No :</b>	P30408
<b>Mouse Gene Id :</b>	17112
<b>Mouse Swiss Prot No :</b>	Q64302
<b>Immunogen :</b>	The antiserum was produced against synthesized peptide derived from human T4S1. AA range:1-50
<b>Specificity :</b>	TM4SF1 Polyclonal Antibody detects endogenous levels of TM4SF1 protein.
<b>Formulation :</b>	Liquid in PBS containing 50% glycerol, 0.5% BSA and 0.02% sodium azide.
<b>Source :</b>	Polyclonal, Rabbit,IgG
<b>Dilution :</b>	IHC 1:100 - 1:300. ELISA: 1:20000.. IF 1:50-200
<b>Purification :</b>	The antibody was affinity-purified from rabbit antiserum by affinity-chromatography using epitope-specific immunogen.
<b>Concentration :</b>	1 mg/ml
<b>Storage Stability :</b>	-15°C to -25°C/1 year(Do not lower than -25°C)

---

**Molecularweight :** 22kD

---

**Background :** The protein encoded by this gene is a member of the transmembrane 4 superfamily, also known as the tetraspanin family. Most of these members are cell-surface proteins that are characterized by the presence of four hydrophobic domains. The proteins mediate signal transduction events that play a role in the regulation of cell development, activation, growth and motility. This encoded protein is a cell surface antigen and is highly expressed in different carcinomas. [provided by RefSeq, Jul 2008],

---

**Function :** similarity:Belongs to the L6 tetraspanin family.,subunit:Present in high molecular weight complexes in tumor cells.,tissue specificity:Highly expressed on lung, breast, colon, and ovarian carcinomas. It is also present on some normal cells, endothelial cells in particular.,

---

**Subcellular Location :** Membrane; Multi-pass membrane protein. Colocalizes with SDCBP2 in the apical region of the cell (PubMed:11102519). .

---

**Expression :** Highly expressed in lung, breast, colon and ovarian carcinomas. It is also present on some normal cells, endothelial cells in particular.

---

**Sort :** 17218

---

**No4 :** 1

---

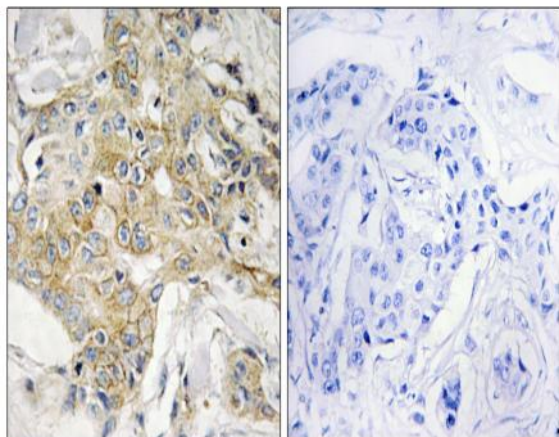
**Host :** Rabbit

---

**Modifications :** Unmodified

---

## Products Images



Immunohistochemistry analysis of paraffin-embedded human breast carcinoma tissue, using T4S1 Antibody. The picture on the right is blocked with the synthesized peptide.