

TIS11D Polyclonal Antibody

Catalog No :	YT4669
Reactivity :	Human;Mouse
Applications :	WB;IHC;IF;ELISA
Target :	TIS11D
Fields :	>>Cellular senescence
Gene Name :	ZFP36L2
Protein Name :	Zinc finger protein 36 C3H1 type-like 2
Human Gene Id :	678
Human Swiss Prot No :	P47974
Mouse Swiss Prot No :	P23949
Immunogen :	The antiserum was produced against synthesized peptide derived from human TISD. AA range:207-256
Specificity :	TIS11D Polyclonal Antibody detects endogenous levels of TIS11D protein.
Formulation :	Liquid in PBS containing 50% glycerol, 0.5% BSA and 0.02% sodium azide.
Source :	Polyclonal, Rabbit,IgG
Dilution :	WB 1:500 - 1:2000. IHC 1:100 - 1:300. ELISA: 1:20000.. IF 1:50-200
Purification :	The antibody was affinity-purified from rabbit antiserum by affinity-chromatography using epitope-specific immunogen.
Concentration :	1 mg/ml
Storage Stability :	-15°C to -25°C/1 year(Do not lower than -25°C)

Observed Band : 55kD

Background : This gene is a member of the TIS11 family of early response genes. Family members are induced by various agonists such as the phorbol ester TPA and the polypeptide mitogen EGF. The encoded protein contains a distinguishing putative zinc finger domain with a repeating cys-his motif. This putative nuclear transcription factor most likely functions in regulating the response to growth factors. [provided by RefSeq, Jul 2008],

Function : function:Probable regulatory protein involved in regulating the response to growth factors. RNA-binding protein that binds to 5'UUUUUUUUUU-3' core sequence. Binds to the class II AU-rich element (ARE) in the 3'-UTR of target mRNAs and promotes their deadenylation and degradation.,similarity:Contains 2 C3H1-type zinc fingers.,

Subcellular Location : Nucleus . Cytoplasm . Shuttles between the nucleus and the cytoplasm in a XPO1/CRM1-dependent manner. .

Expression : Expressed mainly in the basal epidermal layer, weakly in the suprabasal epidermal layers (PubMed:27182009). Expressed in epidermal keratinocytes (at protein level) (PubMed:27182009).

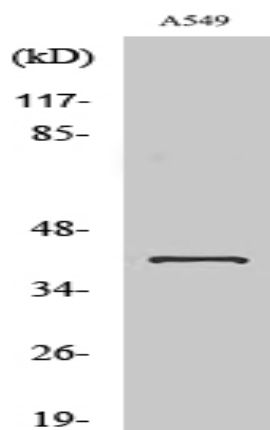
Sort : 17183

No4 : 1

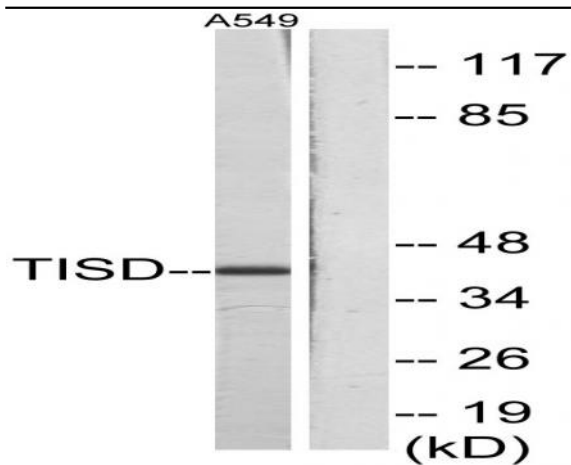
Host : Rabbit

Modifications : Unmodified

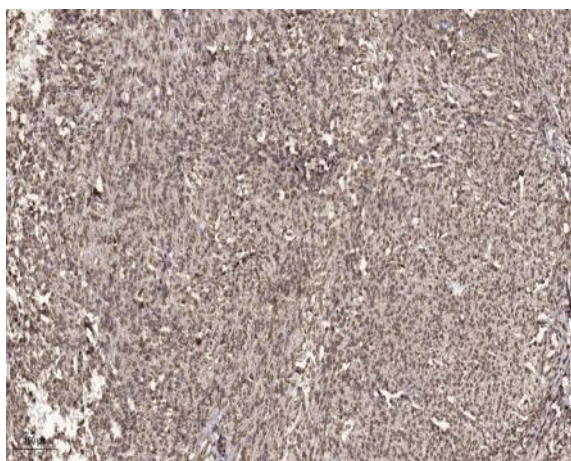
Products Images



Western Blot analysis of various cells using TIS11D Polyclonal Antibody. Secondary antibody(catalog#:RS0002) was diluted at 1:20000



Western blot analysis of lysates from A549 cells, using TISD Antibody. The lane on the right is blocked with the synthesized peptide.



Immunohistochemical analysis of paraffin-embedded human small intestinal carcinoma tissue. 1, primary Antibody was diluted at 1:200 (4° overnight). 2, Sodium citrate pH 6.0 was used for antigen retrieval (>98° C, 20min). 3, Secondary antibody was diluted at 1:200