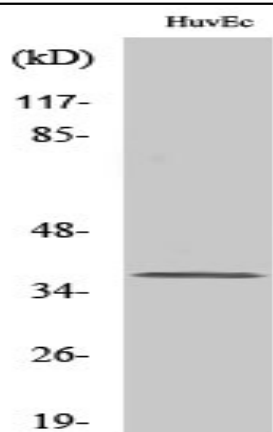


TIS11B Polyclonal Antibody

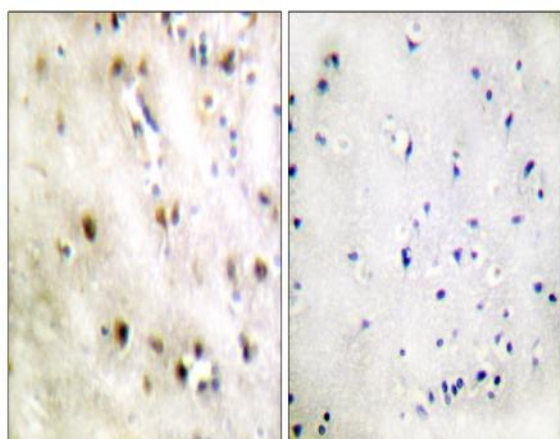
Catalog No :	YT4668
Reactivity :	Human;Mouse;Rat
Applications :	WB;IHC;IF;ELISA
Target :	TIS11B
Fields :	>>Cellular senescence
Gene Name :	ZFP36L1
Protein Name :	Zinc finger protein 36 C3H1 type-like 1
Human Gene Id :	677
Human Swiss Prot No :	Q07352
Mouse Gene Id :	12192
Mouse Swiss Prot No :	P23950
Rat Gene Id :	29344
Rat Swiss Prot No :	P17431
Immunogen :	The antiserum was produced against synthesized peptide derived from human TISB. AA range:58-107
Specificity :	TIS11B Polyclonal Antibody detects endogenous levels of TIS11B protein.
Formulation :	Liquid in PBS containing 50% glycerol, 0.5% BSA and 0.02% sodium azide.
Source :	Polyclonal, Rabbit,IgG
Dilution :	WB 1:500 - 1:2000. IHC 1:100 - 1:300. ELISA: 1:10000.. IF 1:50-200

Purification :	The antibody was affinity-purified from rabbit antiserum by affinity-chromatography using epitope-specific immunogen.
Concentration :	1 mg/ml
Storage Stability :	-15°C to -25°C/1 year(Do not lower than -25°C)
Observed Band :	36kD
Background :	This gene is a member of the TIS11 family of early response genes, which are induced by various agonists such as the phorbol ester TPA and the polypeptide mitogen EGF. This gene is well conserved across species and has a promoter that contains motifs seen in other early-response genes. The encoded protein contains a distinguishing putative zinc finger domain with a repeating cys-his motif. This putative nuclear transcription factor most likely functions in regulating the response to growth factors. Alternatively spliced transcript variants encoding different isoforms have been found for this gene. [provided by RefSeq, Sep 2011],
Function :	function:Probable regulatory protein involved in regulating the response to growth factors.,similarity:Contains 2 C3H1-type zinc fingers.,
Subcellular Location :	Nucleus . Cytoplasm . Cytoplasmic granule . Cytoplasm, P-body . Shuttles between the nucleus and the cytoplasm in a XPO1/CRM1-dependent manner (By similarity). Component of cytoplasmic stress granules (PubMed:15967811). Localizes in processing bodies (PBs) (PubMed:17369404). .
Expression :	Expressed mainly in the basal epidermal layer, weakly in the suprabasal epidermal layers (PubMed:27182009). Expressed in epidermal keratinocytes (at protein level) (PubMed:27182009). Expressed in osteoblasts (PubMed:15465005).
Tag :	hot
Sort :	17182
No4 :	1
Host :	Rabbit
Modifications :	Unmodified

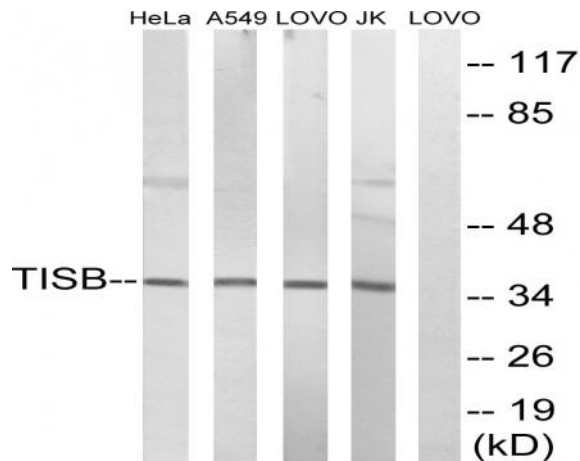
Products Images



Western Blot analysis of various cells using TIS11B Polyclonal Antibody. Secondary antibody(catalog#:RS0002) was diluted at 1:20000



Immunohistochemistry analysis of paraffin-embedded human brain tissue, using TISB Antibody. The picture on the right is blocked with the synthesized peptide.



Western blot analysis of lysates from Jurkat, HeLa, A549, and LOVO cells, using TISB Antibody. The lane on the right is blocked with the synthesized peptide.