

TIMAP Polyclonal Antibody

Catalog No :	YT4657
Reactivity :	Human;Mouse
Applications :	WB;IHC
Target :	TIMAP
Gene Name :	PPP1R16B
Protein Name :	Protein phosphatase 1 regulatory inhibitor subunit 16B
Human Gene Id :	26051
Human Swiss Prot No :	Q96T49
Mouse Gene Id :	228852
Mouse Swiss Prot No :	Q8VHQ3
Immunogen :	The antiserum was produced against synthesized peptide derived from human PPP1R16B. AA range:364-413
Specificity :	TIMAP Polyclonal Antibody detects endogenous levels of TIMAP protein.
Formulation :	Liquid in PBS containing 50% glycerol, 0.5% BSA and 0.02% sodium azide.
Source :	Polyclonal, Rabbit,IgG
Dilution :	WB 1:500-2000;IHC 1:50-300
Purification :	The antibody was affinity-purified from rabbit antiserum by affinity-chromatography using epitope-specific immunogen.
Concentration :	1 mg/ml
Storage Stability :	-15°C to -25°C/1 year(Do not lower than -25°C)

Observed Band : 64kD

Background : The protein encoded by this gene is membrane-associated and contains five ankyrin repeats, a protein phosphatase-1-interacting domain, and a carboxy-terminal CAAX box domain. Synthesis of the encoded protein is inhibited by transforming growth factor beta-1. The protein may bind to the membrane through its CAAX box domain and may act as a signaling molecule through interaction with protein phosphatase-1. Alternative splicing results in multiple transcript variants encoding different isoforms that may undergo similar processing to generate mature protein. [provided by RefSeq, Sep 2015],

Function : function:May be a downstream target for TGF-beta1 signaling cascade in endothelial cells.,induction:Inhibited by TGF-beta1.,similarity:Contains 5 ANK repeats.,subunit:Binds PP1.,tissue specificity:Highly expressed in vascular endothelium, CNS, lung, spleen, kidney and testis.,

Subcellular Location : Cell membrane . Cell membrane ; Lipid-anchor . Nucleus . Cell projection . Colocalizes with RPSA/LAMR1 in the cell membrane (PubMed:16263087). Localizes to the perinuclear region (By similarity). Colocalizes with PTEN at the tip of EC projections (PubMed:25007873). .

Expression : Brain,

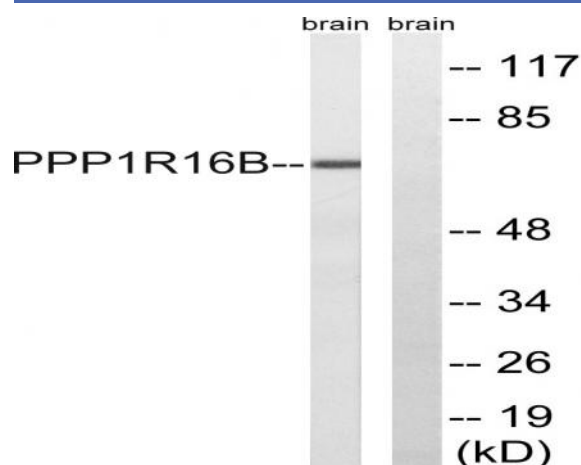
Sort : 17165

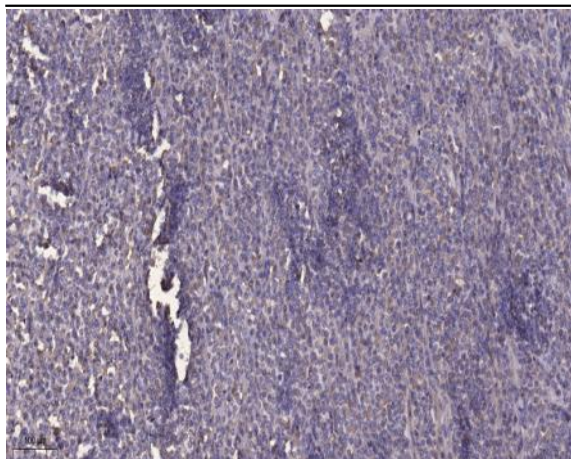
No4 : 1

Host : Rabbit

Modifications : Unmodified

Products Images





Immunohistochemical analysis of paraffin-embedded human Colon cancer. 1, Antibody was diluted at 1:200(4° overnight). 2, Tris-EDTA,pH9.0 was used for antigen retrieval. 3,Secondary antibody was diluted at 1:200(room temperature, 45min).