

## IFN16 Polyclonal Antibody

<b>Catalog No :</b>	YN0217
<b>Reactivity :</b>	Human
<b>Applications :</b>	WB;ELISA
<b>Target :</b>	IFN16
<b>Fields :</b>	>>Cytokine-cytokine receptor interaction;>>PI3K-Akt signaling pathway;>>Necroptosis;>>Toll-like receptor signaling pathway;>>NOD-like receptor signaling pathway;>>RIG-I-like receptor signaling pathway;>>Cytosolic DNA-sensing pathway;>>JAK-STAT signaling pathway;>>Natural killer cell mediated cytotoxicity;>>Alcoholic liver disease;>>Tuberculosis;>>Hepatitis C;>>Hepatitis B;>>Measles;>>Human cytomegalovirus infection;>>Influenza A;>>Human papillomavirus infection;>>Kaposi sarcoma-associated herpesvirus infection;>>Herpes simplex virus 1 infection;>>Epstein-Barr virus infection;>>Human immunodeficiency virus 1 infection;>>Coronavirus disease - COVID-19;>>Pathways in cancer;>>Autoimmune thyroid disease;>>Lipid and atherosclerosis
<b>Gene Name :</b>	IFNA16
<b>Protein Name :</b>	Interferon alpha-16 (IFN-alpha-16) (Interferon alpha-WA)
<b>Human Gene Id :</b>	3449
<b>Human Swiss Prot No :</b>	P05015
<b>Immunogen :</b>	Synthesized peptide derived from human protein . at AA range: 110-190
<b>Specificity :</b>	IFN16 Polyclonal Antibody detects endogenous levels of protein.
<b>Formulation :</b>	Liquid in PBS containing 50% glycerol, and 0.02% sodium azide.
<b>Source :</b>	Polyclonal, Rabbit,IgG
<b>Dilution :</b>	WB 1:500-2000 ELISA 1:5000-20000
<b>Purification :</b>	The antibody was affinity-purified from rabbit antiserum by affinity-

chromatography using epitope-specific immunogen.

**Concentration :** 1 mg/ml

**Storage Stability :** -15°C to -25°C/1 year(Do not lower than -25°C)

**Observed Band :** 20kD

**Cell Pathway :** Cytokine-cytokine receptor interaction;Regulation of autophagy;Antigen processing and presentation;Toll\_Like;RIG-I-like receptor;Cytosolic DNA-sensing pathway;Jak\_STAT;Natural killer cell mediated cyt

**Background :** function:Produced by macrophages, IFN-alpha have antiviral activities. Interferon stimulates the production of two enzymes: a protein kinase and an oligoadenylate synthetase.,similarity:Belongs to the alpha/beta interferon family.,

**Function :** function:Produced by macrophages, IFN-alpha have antiviral activities. Interferon stimulates the production of two enzymes: a protein kinase and an oligoadenylate synthetase.,similarity:Belongs to the alpha/beta interferon family.,

**Subcellular Location :** Secreted.

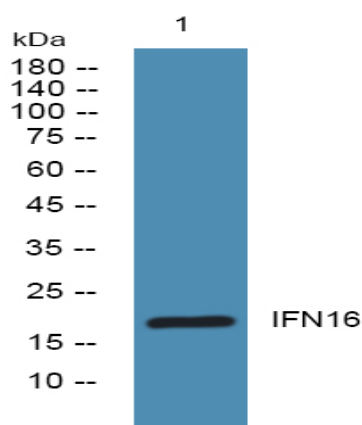
**Sort :** 19571

**No4 :** 1

**Host :** Rabbit

**Modifications :** Unmodified

## Products Images



Western blot analysis of lysates from KB cells, primary antibody was diluted at 1:1000, 4° over night