

V1RL2 Polyclonal Antibody

Catalog No :	YT4847
Reactivity :	Human;Rat;Mouse;
Applications :	WB;IF;ELISA
Target :	V1RL2
Gene Name :	VN1R2
Protein Name :	Vomer nasal type-1 receptor 2
Human Gene Id :	317701
Human Swiss Prot No :	Q8NFZ6
Immunogen :	The antiserum was produced against synthesized peptide derived from human VN1R2. AA range:88-137
Specificity :	V1RL2 Polyclonal Antibody detects endogenous levels of V1RL2 protein.
Formulation :	Liquid in PBS containing 50% glycerol, 0.5% BSA and 0.02% sodium azide.
Source :	Polyclonal, Rabbit,IgG
Dilution :	WB 1:500 - 1:2000. IF 1:200 - 1:1000. ELISA: 1:40000. Not yet tested in other applications.
Purification :	The antibody was affinity-purified from rabbit antiserum by affinity-chromatography using epitope-specific immunogen.
Concentration :	1 mg/ml
Storage Stability :	-15°C to -25°C/1 year(Do not lower than -25°C)
Observed Band :	46kD
Background :	function:Putative pheromone receptor.,miscellaneous:The chimpanzee, gorilla

and orangutan orthologous proteins do not exist, their genes are pseudogenes.,online information:No one nose - Issue 61 of August 2005,similarity:Belongs to the G-protein coupled receptor 1 family.,

Function :

function:Putative pheromone receptor.,miscellaneous:The chimpanzee, gorilla and orangutan orthologous proteins do not exist, their genes are pseudogenes.,online information:No one nose - Issue 61 of August 2005,similarity:Belongs to the G-protein coupled receptor 1 family.,

Subcellular Location :

Cell membrane; Multi-pass membrane protein.

Sort :

24030

No4 :

1

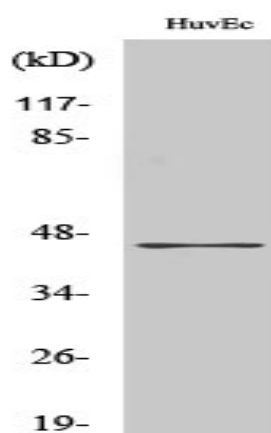
Host :

Rabbit

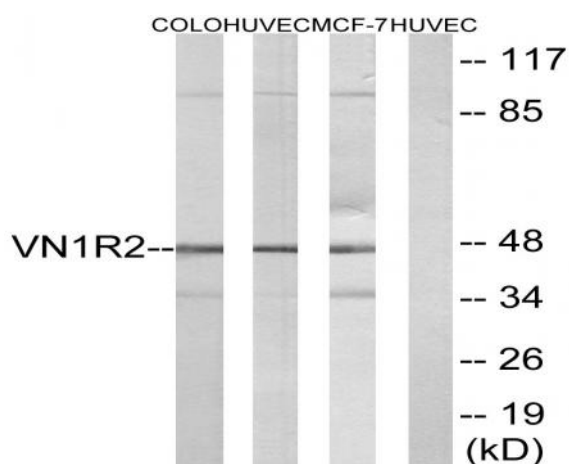
Modifications :

Unmodified

Products Images



Western Blot analysis of various cells using V1RL2 Polyclonal Antibody. Secondary antibody(catalog#:RS0002) was diluted at 1:20000



Western blot analysis of lysates from HUVEC, COLO, and MCF-7 cells, using VN1R2 Antibody. The lane on the right is blocked with the synthesized peptide.