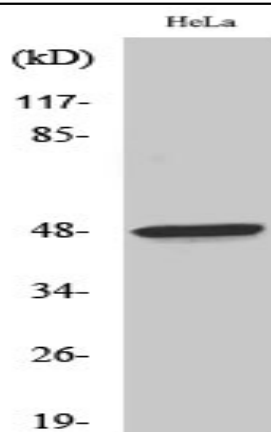


Thrombin R Polyclonal Antibody

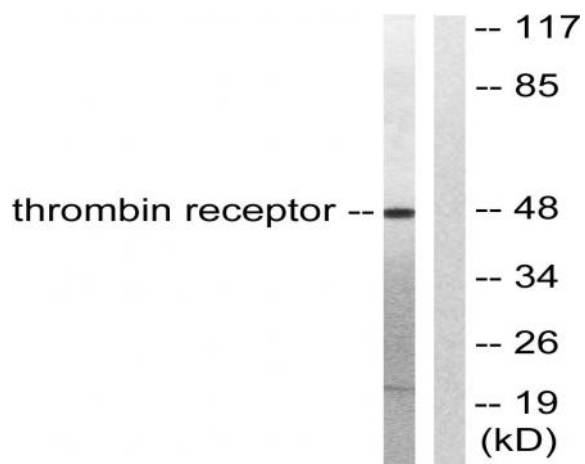
Catalog No :	YT4645
Reactivity :	Human;Rat;Mouse;
Applications :	WB;IHC;IF;ELISA
Target :	Thrombin R
Fields :	>>Rap1 signaling pathway;>>Calcium signaling pathway;>>cAMP signaling pathway;>>Phospholipase D signaling pathway;>>Neuroactive ligand-receptor interaction;>>PI3K-Akt signaling pathway;>>Complement and coagulation cascades;>>Platelet activation;>>Regulation of actin cytoskeleton;>>Pathogenic Escherichia coli infection;>>Pathways in cancer
Gene Name :	F2R
Protein Name :	Proteinase-activated receptor 1
Human Gene Id :	2149
Human Swiss Prot No :	P25116
Mouse Swiss Prot No :	P30558
Immunogen :	The antiserum was produced against synthesized peptide derived from human Thrombin Receptor. AA range:10-59
Specificity :	Thrombin R Polyclonal Antibody detects endogenous levels of Thrombin R protein.
Formulation :	Liquid in PBS containing 50% glycerol, 0.5% BSA and 0.02% sodium azide.
Source :	Polyclonal, Rabbit,IgG
Dilution :	WB 1:500 - 1:2000. ELISA: 1:5000.. IF 1:50-200
Purification :	The antibody was affinity-purified from rabbit antiserum by affinity-chromatography using epitope-specific immunogen.

Concentration :	1 mg/ml
Storage Stability :	-15°C to -25°C/1 year(Do not lower than -25°C)
Observed Band :	48kD
Cell Pathway :	Akt_PKB;Calcium;Neuroactive ligand-receptor interaction;Endocytosis;Complement and coagulation cascades;Regulates Actin and Cytoskeleton;
Background :	Coagulation factor II receptor is a 7-transmembrane receptor involved in the regulation of thrombotic response. Proteolytic cleavage leads to the activation of the receptor. F2R is a G-protein coupled receptor family member. Alternative splicing results in multiple transcript variants. [provided by RefSeq, Aug 2015],
Function :	function:High affinity receptor for activated thrombin coupled to G proteins that stimulate phosphoinositide hydrolysis. May play a role in platelets activation and in vascular development.,PTM:A proteolytic cleavage generates a new N-terminus that functions as a tethered ligand.,PTM:Phosphorylated; probably mediating desensitization prior to the uncoupling and internalization of the receptor.,similarity:Belongs to the G-protein coupled receptor 1 family.,tissue specificity:Platelets and vascular endothelial cells.,
Subcellular Location :	Cell membrane; Multi-pass membrane protein.
Expression :	Platelets and vascular endothelial cells.
Tag :	orthogonal
Sort :	17108
No4 :	1
Host :	Rabbit
Modifications :	Unmodified

Products Images



Western Blot analysis of various cells using Thrombin R Polyclonal Antibody



Western blot analysis of lysates from HeLa cells, treated with Nocodazole 1ug/ml 18h, using Thrombin Receptor Antibody. The lane on the right is blocked with the synthesized peptide.