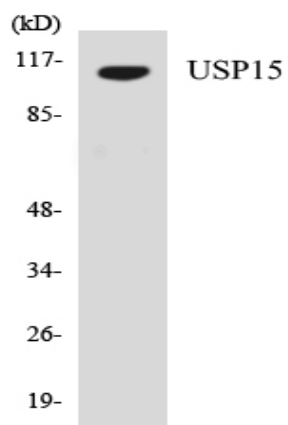


USP15 Polyclonal Antibody

Catalog No :	YT4830
Reactivity :	Human;Mouse;Rat
Applications :	WB;ELISA
Target :	USP15
Fields :	>>Mitophagy - animal
Gene Name :	USP15
Protein Name :	Ubiquitin carboxyl-terminal hydrolase 15
Human Gene Id :	9958
Human Swiss Prot No :	Q9Y4E8
Mouse Gene Id :	14479
Mouse Swiss Prot No :	Q8R5H1
Rat Swiss Prot No :	Q9R085
Immunogen :	The antiserum was produced against synthesized peptide derived from human USP15. AA range:81-130
Specificity :	USP15 Polyclonal Antibody detects endogenous levels of USP15 protein.
Formulation :	Liquid in PBS containing 50% glycerol, 0.5% BSA and 0.02% sodium azide.
Source :	Polyclonal, Rabbit,IgG
Dilution :	WB 1:500 - 1:2000. ELISA: 1:10000. Not yet tested in other applications.
Purification :	The antibody was affinity-purified from rabbit antiserum by affinity-chromatography using epitope-specific immunogen.

Concentration :	1 mg/ml
Storage Stability :	-15°C to -25°C/1 year(Do not lower than -25°C)
Observed Band :	115kD
Background :	<p>This gene encodes a member of the ubiquitin specific protease (USP) family of deubiquitinating enzymes. USP enzymes play critical roles in ubiquitin-dependent processes through polyubiquitin chain disassembly and hydrolysis of ubiquitin-substrate bonds. The encoded protein associates with the COP9 signalosome, and also plays a role in transforming growth factor beta signalling through deubiquitination of receptor-activated SMAD transcription factors. Alternatively spliced transcript variants encoding multiple isoforms have been observed for this gene, and a pseudogene of this gene is located on the long arm of chromosome 2. [provided by RefSeq, Nov 2011],</p>
Function :	<p>catalytic activity:Ubiquitin C-terminal thioester + H(2)O = ubiquitin + a thiol.,similarity:Belongs to the peptidase C19 family.,similarity:Contains 1 DUSP domain.,tissue specificity:Expressed in skeletal muscle, kidney, heart, placenta, liver, thymus, lung, and ovary, with little or no expression in other tissues.,</p>
Subcellular Location :	Cytoplasm . Nucleus . Mitochondrion .
Expression :	Expressed in skeletal muscle, kidney, heart, placenta, liver, thymus, lung, and ovary, with little or no expression in other tissues.
Sort :	24002
No4 :	1
Host :	Rabbit
Modifications :	Unmodified

Products Images



Western blot analysis of the lysates from HeLa cells using USP15 antibody.