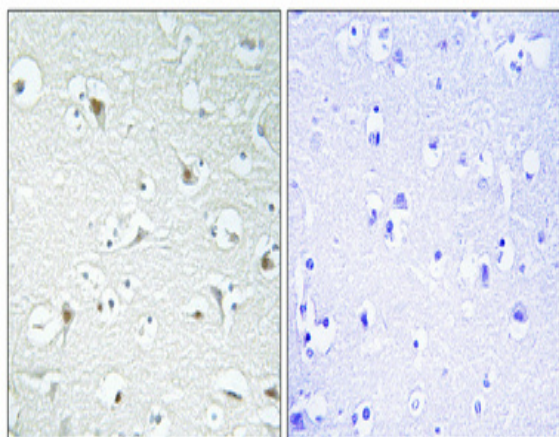


TFIIA- α Polyclonal Antibody

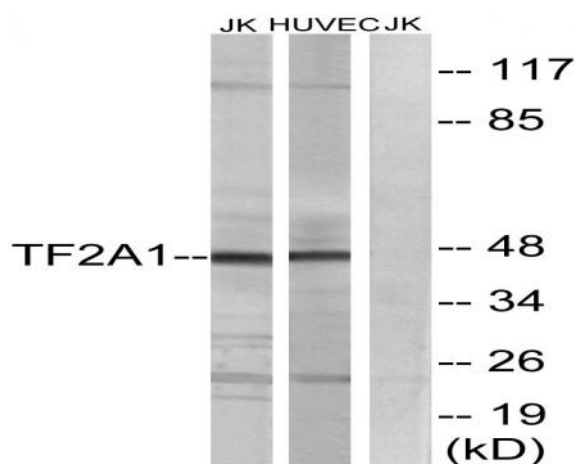
Catalog No :	YT4614
Reactivity :	Human;Mouse;Rat
Applications :	WB;IHC;IF;ELISA
Target :	TFIIA- α
Fields :	>>Basal transcription factors;>>Viral carcinogenesis
Gene Name :	GTF2A1
Protein Name :	Transcription initiation factor IIA subunit 1
Human Gene Id :	2957
Human Swiss Prot No :	P52655
Mouse Gene Id :	83602
Mouse Swiss Prot No :	Q99PM3
Rat Gene Id :	83830
Rat Swiss Prot No :	O08949
Immunogen :	The antiserum was produced against synthesized peptide derived from human TF2A1. AA range:281-330
Specificity :	TFIIA- α Polyclonal Antibody detects endogenous levels of TFIIA- α protein.
Formulation :	Liquid in PBS containing 50% glycerol, 0.5% BSA and 0.02% sodium azide.
Source :	Polyclonal, Rabbit,IgG
Dilution :	WB 1:500 - 1:2000. IHC 1:100 - 1:300. ELISA: 1:40000.. IF 1:50-200

Purification :	The antibody was affinity-purified from rabbit antiserum by affinity-chromatography using epitope-specific immunogen.
Concentration :	1 mg/ml
Storage Stability :	-15°C to -25°C/1 year(Do not lower than -25°C)
Observed Band :	42kD
Cell Pathway :	Basal transcription factors;
Background :	Accurate transcription initiation on TATA-containing class II genes involves the ordered assembly of RNA polymerase II (POLR2A; MIM 180660) and several general initiation factors (summarized by DeJong and Roeder, 1993 [PubMed 8224848]). One of these factors is TFIIA, which when purified from HeLa extracts consists of 35-, 19-, and 12-kD subunits.[supplied by OMIM, Jul 2010],
Function :	function:TFIIA is a component of the transcription machinery of RNA polymerase II and plays an important role in transcriptional activation. TFIIA in a complex with TBP mediates transcriptional activity.,PTM:The alpha and beta subunits are postranslationally produced from the precursor form by TASP1. The cleavage promotes proteosomal degradation.,similarity:Belongs to the TFIIA subunit 1 family.,subunit:TFIIA is a heterodimer of the large unprocessed subunit 1 and a small subunit gamma. It was originally believed to be a heterotrimer of an alpha (p35), a beta (p19) and a gamma subunit (p12). TFIIA forms a complex with TBP.,
Subcellular Location :	Nucleus.
Expression :	Epithelium,
Sort :	17060
No4 :	1
Host :	Rabbit
Modifications :	Unmodified

Products Images



Immunohistochemical analysis of paraffin-embedded Human brain. Antibody was diluted at 1:100(4° overnight). High-pressure and temperature Tris-EDTA,pH8.0 was used for antigen retrieval. Negative control (right) obtained from antibody was pre-absorbed by immunogen peptide.



Western blot analysis of lysates from Jurkat and HUVEC cells, using TF2A1 Antibody. The lane on the right is blocked with the synthesized peptide.