

UEV3 Polyclonal Antibody

Catalog No :	YT4817
Reactivity :	Human;Rat;Mouse;
Applications :	WB;IHC;IF;ELISA
Target :	UEV3
Gene Name :	UEVLD
Protein Name :	Ubiquitin-conjugating enzyme E2 variant 3
Human Gene Id :	55293
Human Swiss Prot No :	Q8IX04
Mouse Swiss Prot No :	Q3U1V6
Immunogen :	The antiserum was produced against synthesized peptide derived from human UEVLD. AA range:141-190
Specificity :	UEV3 Polyclonal Antibody detects endogenous levels of UEV3 protein.
Formulation :	Liquid in PBS containing 50% glycerol, 0.5% BSA and 0.02% sodium azide.
Source :	Polyclonal, Rabbit,IgG
Dilution :	WB 1:500 - 1:2000. IHC 1:100 - 1:300. ELISA: 1:40000.. IF 1:50-200
Purification :	The antibody was affinity-purified from rabbit antiserum by affinity-chromatography using epitope-specific immunogen.
Concentration :	1 mg/ml
Storage Stability :	-15°C to -25°C/1 year(Do not lower than -25°C)
Observed Band :	52kD

Background : function:Possible negative regulator of polyubiquitination.,similarity:Contains 1 UEV (ubiquitin E2 variant) domain.,similarity:In the C-terminal section; belongs to the LDH/MDH superfamily.,similarity:In the N-terminal section; belongs to the ubiquitin-conjugating enzyme family. UEV subfamily.,subunit:Homodimer.,tissue specificity:Colon, colon carcinoma cell lines, normal cervical epithelium, carcinomas of the uterine cervix and peripheral blood leukocytes.,

Function : function:Possible negative regulator of polyubiquitination.,similarity:Contains 1 UEV (ubiquitin E2 variant) domain.,similarity:In the C-terminal section; belongs to the LDH/MDH superfamily.,similarity:In the N-terminal section; belongs to the ubiquitin-conjugating enzyme family. UEV subfamily.,subunit:Homodimer.,tissue specificity:Colon, colon carcinoma cell lines, normal cervical epithelium, carcinomas of the uterine cervix and peripheral blood leukocytes.,

Subcellular Location : extracellular exosome,

Expression : Colon, colon carcinoma cell lines, normal cervical epithelium, carcinomas of the uterine cervix and peripheral blood leukocytes.

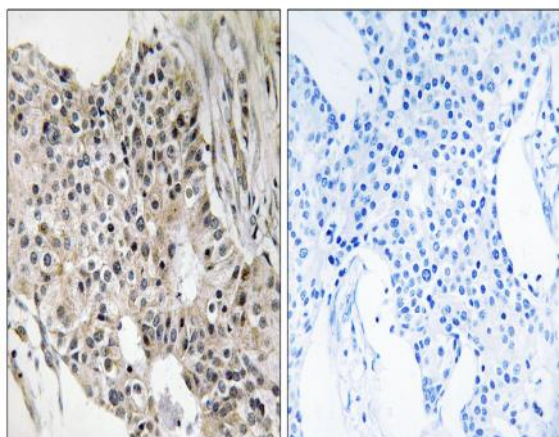
Sort : 23938

No4 : 1

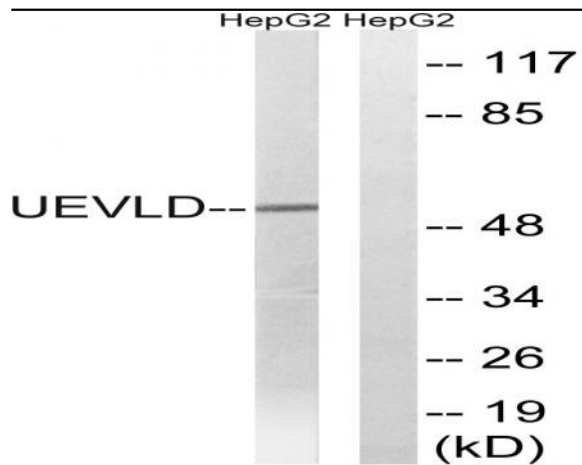
Host : Rabbit

Modifications : Unmodified

Products Images



Immunohistochemistry analysis of paraffin-embedded human breast carcinoma tissue, using UEVLD Antibody. The picture on the right is blocked with the synthesized peptide.



Western blot analysis of lysates from HepG2 cells, using UEVLD Antibody. The lane on the right is blocked with the synthesized peptide.