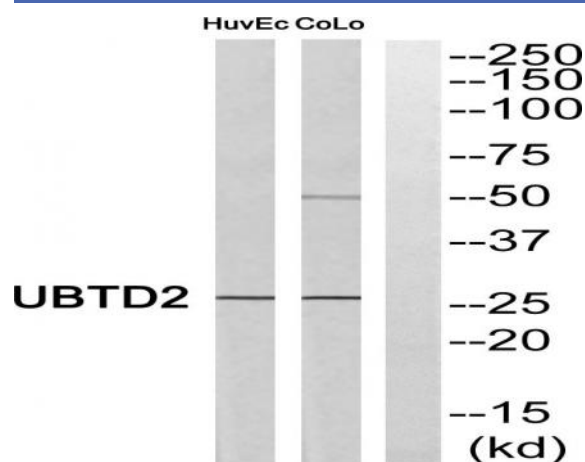


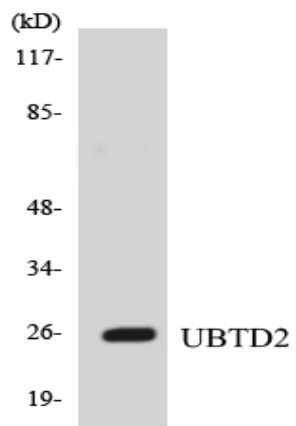
UBTD2 Polyclonal Antibody

Catalog No :	YT4811
Reactivity :	Human;Mouse
Applications :	WB;ELISA
Target :	UBTD2
Gene Name :	UBTD2
Protein Name :	Ubiquitin domain-containing protein 2
Human Gene Id :	92181
Human Swiss Prot No :	Q8WUN7
Mouse Gene Id :	327900
Mouse Swiss Prot No :	Q6PGH0
Immunogen :	The antiserum was produced against synthesized peptide derived from human UBTD2. AA range:181-230
Specificity :	UBTD2 Polyclonal Antibody detects endogenous levels of UBTD2 protein.
Formulation :	Liquid in PBS containing 50% glycerol, 0.5% BSA and 0.02% sodium azide.
Source :	Polyclonal, Rabbit,IgG
Dilution :	WB 1:500 - 1:2000. ELISA: 1:40000. Not yet tested in other applications.
Purification :	The antibody was affinity-purified from rabbit antiserum by affinity-chromatography using epitope-specific immunogen.
Concentration :	1 mg/ml
Storage Stability :	-15°C to -25°C/1 year(Do not lower than -25°C)

Observed Band :	26kD
Background :	similarity:Contains 1 ubiquitin-like domain.,tissue specificity:Detected in dendritic cells. Highly expressed in tumor cell lines, but not detectable in most tissues.,
Function :	similarity:Contains 1 ubiquitin-like domain.,tissue specificity:Detected in dendritic cells. Highly expressed in tumor cell lines, but not detectable in most tissues.,
Subcellular Location :	Cytoplasm .
Expression :	Detected in dendritic cells. Highly expressed in tumor cell lines, but not detectable in most tissues.
Sort :	23917
No4 :	1
Host :	Rabbit
Modifications :	Unmodified

Products Images





Western blot analysis of the lysates from HUVEC cells using UBTD2 antibody.