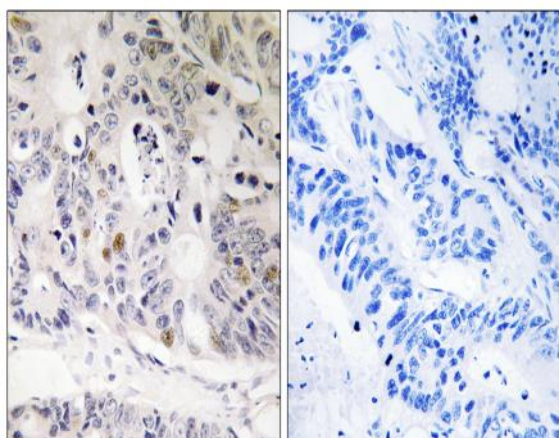


UBTD1 Polyclonal Antibody

Catalog No :	YT4810
Reactivity :	Human;Mouse;Rat
Applications :	IHC;IF;ELISA
Target :	UBTD1
Gene Name :	UBTD1
Protein Name :	Ubiquitin domain-containing protein 1
Human Gene Id :	80019
Human Swiss Prot No :	Q9HAC8
Mouse Gene Id :	226122
Mouse Swiss Prot No :	Q91WB7
Rat Gene Id :	309373
Rat Swiss Prot No :	Q68FV8
Immunogen :	The antiserum was produced against synthesized peptide derived from human UBTD1. AA range:151-200
Specificity :	UBTD1 Polyclonal Antibody detects endogenous levels of UBTD1 protein.
Formulation :	Liquid in PBS containing 50% glycerol, 0.5% BSA and 0.02% sodium azide.
Source :	Polyclonal, Rabbit,IgG
Dilution :	IHC 1:100 - 1:300. ELISA: 1:20000.. IF 1:50-200
Purification :	The antibody was affinity-purified from rabbit antiserum by affinity-chromatography using epitope-specific immunogen.

Concentration :	1 mg/ml
Storage Stability :	-15°C to -25°C/1 year(Do not lower than -25°C)
Observed Band :	26kD
Background :	The degradation of many proteins is carried out by the ubiquitin pathway in which proteins are targeted for degradation by covalent conjugation of the polypeptide ubiquitin. This gene encodes a protein that belongs to the ubiquitin family of proteins. The encoded protein is thought to regulate E2 ubiquitin conjugating enzymes belonging to the UBE2D family. [provided by RefSeq, Mar 2014],
Function :	similarity:Contains 1 ubiquitin-like domain.,
Expression :	Coronary artery,Embryo,Placenta,
Sort :	23916
No4 :	1
Host :	Rabbit
Modifications :	Unmodified

Products Images



Immunohistochemistry analysis of paraffin-embedded human colon carcinoma tissue, using UBTD1 Antibody. The picture on the right is blocked with the synthesized peptide.