

Ubr1 Polyclonal Antibody

Catalog No :	YT4808
Reactivity :	Human;Mouse
Applications :	WB;IHC;IF;ELISA
Target :	Ubr1
Gene Name :	UBR1
Protein Name :	E3 ubiquitin-protein ligase UBR1
Human Gene Id :	197131
Human Swiss Prot No :	Q8IWW7
Mouse Gene Id :	22222
Mouse Swiss Prot No :	O70481
Immunogen :	The antiserum was produced against synthesized peptide derived from human UBR1. AA range:821-870
Specificity :	Ubr1 Polyclonal Antibody detects endogenous levels of Ubr1 protein.
Formulation :	Liquid in PBS containing 50% glycerol, 0.5% BSA and 0.02% sodium azide.
Source :	Polyclonal, Rabbit,IgG
Dilution :	WB 1:500 - 1:2000. IHC 1:100 - 1:300. ELISA: 1:20000.. IF 1:50-200
Purification :	The antibody was affinity-purified from rabbit antiserum by affinity-chromatography using epitope-specific immunogen.
Concentration :	1 mg/ml
Storage Stability :	-15°C to -25°C/1 year(Do not lower than -25°C)

Observed Band : 200kD

Background : The N-end rule pathway is one proteolytic pathway of the ubiquitin system. The recognition component of this pathway, encoded by this gene, binds to a destabilizing N-terminal residue of a substrate protein and participates in the formation of a substrate-linked multiubiquitin chain. This leads to the eventual degradation of the substrate protein. The protein described in this record has a RING-type zinc finger and a UBR-type zinc finger. Mutations in this gene have been associated with Johanson-Blizzard syndrome. [provided by RefSeq, Jul 2008],

Function : developmental stage:Expressed in fetal pancreas.,disease:Defects in UBR1 are a cause of Johanson-Blizzard syndrome (JBS) [MIM:243800]. This disorder includes congenital exocrine pancreatic insufficiency, multiple malformations such as nasal wing aplasia, and frequent mental retardation. Pancreas of individuals with JBS do not express UBR1 and show intrauterine-onset destructive pancreatitis.,domain:The RING-H2 zinc finger is an atypical RING finger with a His ligand in place of the fourth Cys of the classical motif.,function:E3 ubiquitin-protein ligase which is a component of the N-end rule pathway. Recognizes and binds to proteins bearing specific N-terminal residues that are destabilizing according to the N-end rule, leading to their ubiquitination and subsequent degradation. May be involved in pancreatic homeostasis.,pathway:Protein modification; protein ubiquitination.,PTM:Phosphoryl

Subcellular Location : Cytoplasm, cytosol .

Expression : Broadly expressed, with highest levels in skeletal muscle, kidney and pancreas. Present in acinar cells of the pancreas (at protein level).

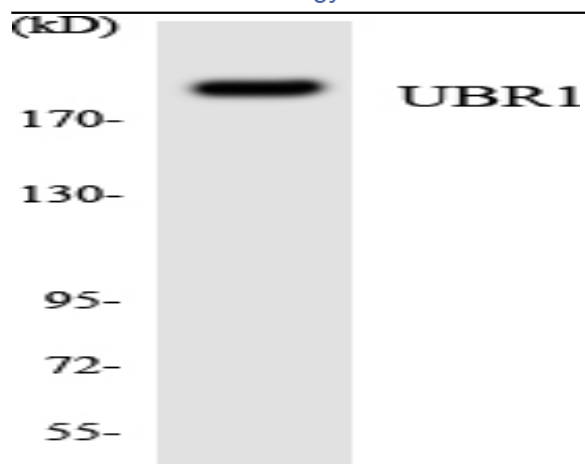
Sort : 23910

No4 : 1

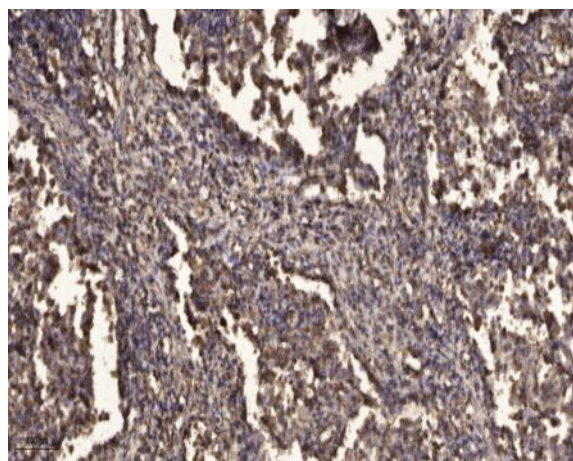
Host : Rabbit

Modifications : Unmodified

Products Images



Western blot analysis of the lysates from HUVEC cells using UBR1 antibody.



Immunohistochemical analysis of paraffin-embedded human Squamous cell carcinoma of lung. 1, Antibody was diluted at 1:200 (4° overnight). 2, Tris-EDTA, pH 9.0 was used for antigen retrieval. 3, Secondary antibody was diluted at 1:200 (room temperature, 45 min).