

TEF-4 Polyclonal Antibody

Catalog No :	YT4597
Reactivity :	Human;Mouse
Applications :	WB;IHC;IF;ELISA
Target :	TEF-4
Fields :	>>Hippo signaling pathway;>>Hippo signaling pathway - multiple species
Gene Name :	TEAD2
Protein Name :	Transcriptional enhancer factor TEF-4
Human Gene Id :	8463
Human Swiss Prot No :	Q15562
Mouse Gene Id :	21677
Mouse Swiss Prot No :	P48301
Immunogen :	The antiserum was produced against synthesized peptide derived from human TEAD2. AA range:71-120
Specificity :	TEF-4 Polyclonal Antibody detects endogenous levels of TEF-4 protein.
Formulation :	Liquid in PBS containing 50% glycerol, 0.5% BSA and 0.02% sodium azide.
Source :	Polyclonal, Rabbit,IgG
Dilution :	WB 1:500-2000 IHC 1:100 - 1:300. IF 1:200 - 1:1000. ELISA: 1:20000. Not yet tested in other applications.
Purification :	The antibody was affinity-purified from rabbit antiserum by affinity-chromatography using epitope-specific immunogen.
Concentration :	1 mg/ml

Storage Stability : -15°C to -25°C/1 year(Do not lower than -25°C)

Molecularweight : 49kD

Background : function:Putative transcription factor that binds to the SPH and GT-IIC "enhansons" (5'-GTGGAATGT-3'). May be involved in the gene regulation of neural development. Binds to the M-CAT motif.,similarity:Contains 1 TEA DNA-binding domain.,

Function : function:Putative transcription factor that binds to the SPH and GT-IIC "enhansons" (5'-GTGGAATGT-3'). May be involved in the gene regulation of neural development. Binds to the M-CAT motif.,similarity:Contains 1 TEA DNA-binding domain.,

Subcellular Location : Nucleus.

Expression : Brain, Eye, Skin, Testis,

Tag : orthogonal

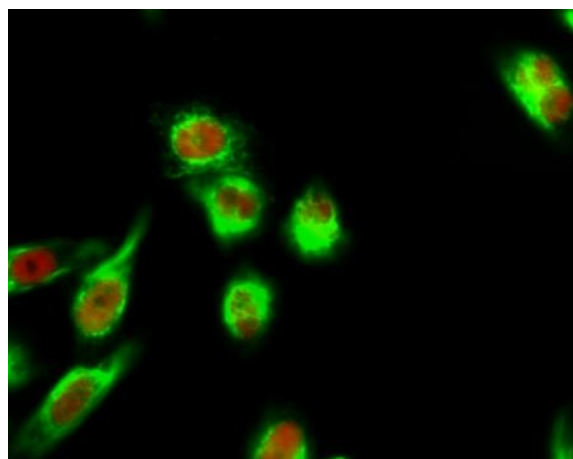
Sort : 17026

No4 : 1

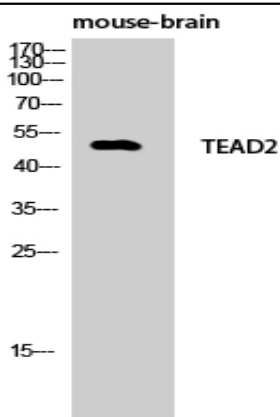
Host : Rabbit

Modifications : Unmodified

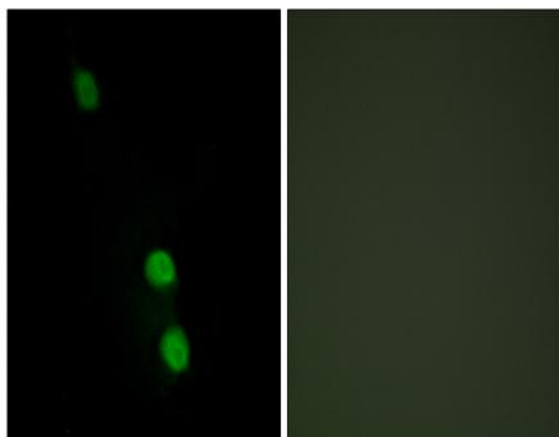
Products Images



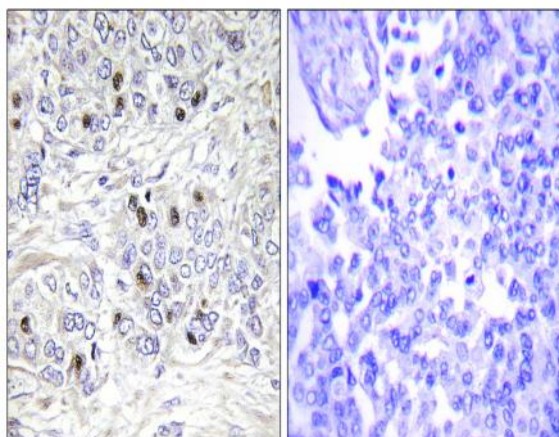
Immunofluorescence analysis of HeLa cell. 1, TEF-4 Polyclonal Antibody(red) was diluted at 1:200(4° overnight). β -actin Monoclonal Antibody(5B7)(green) was diluted at 1:200(4° overnight). 2, Goat Anti Rabbit Alexa Fluor 594 Catalog:RS3611 was diluted at 1:1000(room temperature, 50min). Goat Anti Mouse Alexa Fluor 488 Catalog:RS3208 was diluted at 1:1000(room temperature, 50min).



Western Blot analysis of mouse-brain cells using TEF-4 Polyclonal Antibody cells nucleus extracted by Minute TM Cytoplasmic and Nuclear Fractionation kit (SC-003, Inventbiotech, MN, USA).



Immunofluorescence analysis of HepG2 cells, using TEAD2 Antibody. The picture on the right is blocked with the synthesized peptide.



Immunohistochemistry analysis of paraffin-embedded human breast carcinoma tissue, using TEAD2 Antibody. The picture on the right is blocked with the synthesized peptide.