

**UBE2G1 Polyclonal Antibody**

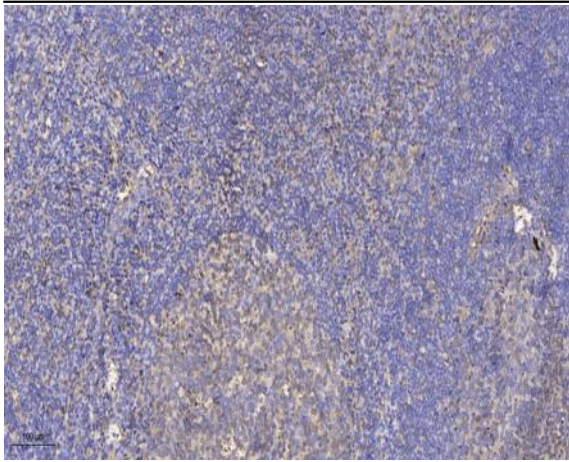
<b>Catalog No :</b>	YT4799
<b>Reactivity :</b>	Human;Mouse;Rat
<b>Applications :</b>	IHC;IF;ELISA
<b>Target :</b>	UBE2G1
<b>Fields :</b>	>>Ubiquitin mediated proteolysis;>>Protein processing in endoplasmic reticulum;>>Parkinson disease;>>Pathways of neurodegeneration - multiple diseases
<b>Gene Name :</b>	UBE2G1
<b>Protein Name :</b>	Ubiquitin-conjugating enzyme E2 G1
<b>Human Gene Id :</b>	7326
<b>Human Swiss Prot No :</b>	P62253
<b>Mouse Gene Id :</b>	67128
<b>Mouse Swiss Prot No :</b>	P62254
<b>Rat Gene Id :</b>	64631
<b>Rat Swiss Prot No :</b>	P62255
<b>Immunogen :</b>	Synthesized peptide derived from the Internal region of human UBE2G1.
<b>Specificity :</b>	UBE2G1 Polyclonal Antibody detects endogenous levels of UBE2G1 protein.
<b>Formulation :</b>	Liquid in PBS containing 50% glycerol, 0.5% BSA and 0.02% sodium azide.
<b>Source :</b>	Polyclonal, Rabbit,IgG
<b>Dilution :</b>	IHC 1:100 - 1:300. ELISA: 1:40000.. IF 1:50-200

---

<b>Purification :</b>	The antibody was affinity-purified from rabbit antiserum by affinity-chromatography using epitope-specific immunogen.
<b>Concentration :</b>	1 mg/ml
<b>Storage Stability :</b>	-15°C to -25°C/1 year(Do not lower than -25°C)
<b>Molecularweight :</b>	20kD
<b>Cell Pathway :</b>	Ubiquitin mediated proteolysis;Parkinson's disease;
<b>Background :</b>	The modification of proteins with ubiquitin is an important cellular mechanism for targeting abnormal or short-lived proteins for degradation. Ubiquitination involves at least three classes of enzymes: ubiquitin-activating enzymes, or E1s, ubiquitin-conjugating enzymes, or E2s, and ubiquitin-protein ligases, or E3s. This gene encodes a member of the E2 ubiquitin-conjugating enzyme family and catalyzes the covalent attachment of ubiquitin to other proteins. The protein may be involved in degradation of muscle-specific proteins. [provided by RefSeq, Jul 2008],
<b>Function :</b>	catalytic activity:ATP + ubiquitin + protein lysine = AMP + diphosphate + protein N-ubiquityllysine.,function:Catalyzes the covalent attachment of ubiquitin to other proteins. May be involved in degradation of muscle-specific proteins.,pathway:Protein modification; protein ubiquitination.,similarity:Belongs to the ubiquitin-conjugating enzyme family.,tissue specificity:Widely expressed, mainly in skeletal muscle.,
<b>Subcellular Location :</b>	cytoplasm,extracellular exosome,
<b>Expression :</b>	Widely expressed, mainly in skeletal muscle.
<b>Sort :</b>	23860
<b>No4 :</b>	1
<b>Host :</b>	Rabbit
<b>Modifications :</b>	Unmodified

---

## Products Images



Immunohistochemical analysis of paraffin-embedded human tonsil. 1, Antibody was diluted at 1:200(4 ° overnight). 2, Tris-EDTA,pH9.0 was used for antigen retrieval. 3,Secondary antibody was diluted at 1:200(room temperature, 30min).