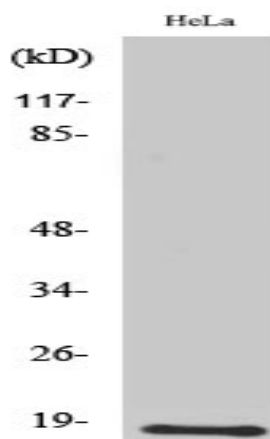


**UBE2D2 Polyclonal Antibody**

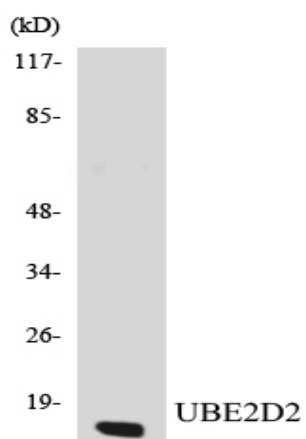
<b>Catalog No :</b>	YT4798
<b>Reactivity :</b>	Human;Mouse;Rat
<b>Applications :</b>	WB;ELISA
<b>Target :</b>	UBE2D2
<b>Fields :</b>	>>Ubiquitin mediated proteolysis;>>Protein processing in endoplasmic reticulum;>>Shigellosis
<b>Gene Name :</b>	UBE2D2
<b>Protein Name :</b>	Ubiquitin-conjugating enzyme E2 D2
<b>Human Gene Id :</b>	7322
<b>Human Swiss Prot No :</b>	P62837
<b>Mouse Gene Id :</b>	56550
<b>Mouse Swiss Prot No :</b>	P62838
<b>Rat Gene Id :</b>	641452
<b>Rat Swiss Prot No :</b>	P62839
<b>Immunogen :</b>	The antiserum was produced against synthesized peptide derived from human UBE2D2. AA range:98-147
<b>Specificity :</b>	UBE2D2 Polyclonal Antibody detects endogenous levels of UBE2D2 protein.
<b>Formulation :</b>	Liquid in PBS containing 50% glycerol, 0.5% BSA and 0.02% sodium azide.
<b>Source :</b>	Polyclonal, Rabbit,IgG
<b>Dilution :</b>	WB 1:500 - 1:2000. ELISA: 1:10000. Not yet tested in other applications.

<b>Purification :</b>	The antibody was affinity-purified from rabbit antiserum by affinity-chromatography using epitope-specific immunogen.
<b>Concentration :</b>	1 mg/ml
<b>Storage Stability :</b>	-15°C to -25°C/1 year(Do not lower than -25°C)
<b>Observed Band :</b>	17kD
<b>Cell Pathway :</b>	Ubiquitin mediated proteolysis;
<b>Background :</b>	Regulated degradation of misfolded, damaged or short-lived proteins in eukaryotes occurs via the ubiquitin (Ub)-proteasome system (UPS). An integral part of the UPS system is the ubiquitination of target proteins and covalent linkage of Ub-containing proteins to form polymeric chains, marking them as targets for 26S proteasome-mediated degradation. Ubiquitination of proteins is mediated by a cascade of enzymes which includes E1 (ubiquitin activating), E2 (ubiquitin conjugating), and E3 (ubiquitin ligases) enzymes. This gene encodes a member of the E2 enzyme family. Substrates of this enzyme include the tumor suppressor protein p53 and peroxisomal biogenesis factor 5 (PEX5). Alternative splicing results in multiple transcript variants of this gene. [provided by RefSeq, May 2013],
<b>Function :</b>	catalytic activity:ATP + ubiquitin + protein lysine = AMP + diphosphate + protein N-ubiquityllysine.,function:Catalyzes the covalent attachment of ubiquitin to other proteins. Mediates the selective degradation of short-lived and abnormal proteins. Functions in the E6/E6-AP-induced ubiquitination of p53/TP53.,pathway:Protein modification; protein ubiquitination.,similarity:Belongs to the ubiquitin-conjugating enzyme family.,subunit:Interacts with SCF (SKP1-CUL1-F-box protein) E3 ubiquitin ligase complex and with E3 ubiquitin-protein ligase PJA2.,
<b>Subcellular Location :</b>	ubiquitin ligase complex,nucleoplasm,cytosol,protein complex,extracellular exosome,
<b>Expression :</b>	Brain,Cajal-Retzius cell,Testis,
<b>Sort :</b>	23859
<b>No4 :</b>	1
<b>Host :</b>	Rabbit
<b>Modifications :</b>	Unmodified

## Products Images



Western Blot analysis of various cells using UBE2D2 Polyclonal Antibody diluted at 1:2000. Secondary antibody(catalog#:RS0002) was diluted at 1:20000



Western blot analysis of the lysates from K562 cells using UBE2D2 antibody.