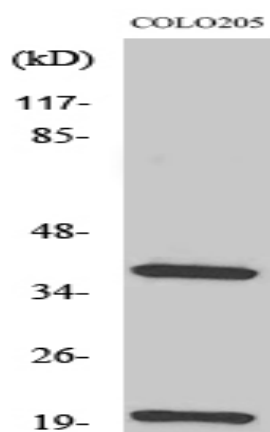


TCR β Polyclonal Antibody

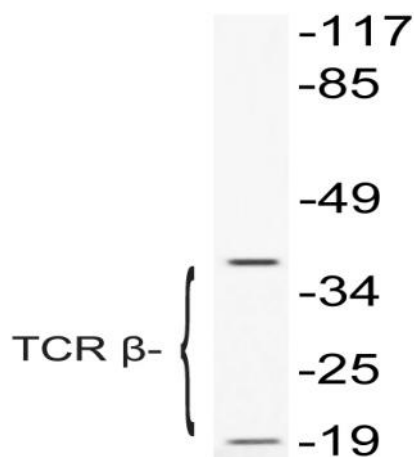
Catalog No :	YT4588
Reactivity :	Human
Applications :	WB;ELISA
Target :	TCR β
Gene Name :	TRBC1
Protein Name :	T-cell receptor beta-1 chain C region
Human Gene Id :	28639
Human Swiss Prot No :	P01850
Immunogen :	The antiserum was produced against synthesized peptide derived from human TCR beta. AA range:66-115
Specificity :	TCR β Polyclonal Antibody detects endogenous levels of TCR β protein.
Formulation :	Liquid in PBS containing 50% glycerol, 0.5% BSA and 0.02% sodium azide.
Source :	Polyclonal, Rabbit,IgG
Dilution :	WB 1:500 - 1:2000. ELISA: 1:10000. Not yet tested in other applications.
Purification :	The antibody was affinity-purified from rabbit antiserum by affinity-chromatography using epitope-specific immunogen.
Concentration :	1 mg/ml
Storage Stability :	-15°C to -25°C/1 year(Do not lower than -25°C)
Observed Band :	20kD
Background :	similarity:Contains 1 Ig-like (immunoglobulin-like) domain.,

Function :	similarity:Contains 1 Ig-like (immunoglobulin-like) domain.,
Subcellular Location :	Cell membrane .
Expression :	Lymph node: intermediate region,
Tag :	orthogonal
Sort :	17012
No4 :	1
Host :	Rabbit
Modifications :	Unmodified

Products Images



Western Blot analysis of various cells using TCR β Polyclonal Antibody



Western blot analysis of lysate from COLO205 cells treated with Forskolin, using TCR β antibody.