

TCP-1 η Polyclonal Antibody

Catalog No :	YT4586
Reactivity :	Human;Mouse;Rat
Applications :	WB;ELISA
Target :	TCP-1 η
Gene Name :	CCT7
Protein Name :	T-complex protein 1 subunit eta
Human Gene Id :	10574
Human Swiss Prot No :	Q99832
Mouse Gene Id :	12468
Mouse Swiss Prot No :	P80313
Immunogen :	The antiserum was produced against synthesized peptide derived from human CCT7. AA range:221-270
Specificity :	TCP-1 η Polyclonal Antibody detects endogenous levels of TCP-1 η protein.
Formulation :	Liquid in PBS containing 50% glycerol, 0.5% BSA and 0.02% sodium azide.
Source :	Polyclonal, Rabbit,IgG
Dilution :	WB 1:500 - 1:2000. ELISA: 1:5000. Not yet tested in other applications.
Purification :	The antibody was affinity-purified from rabbit antiserum by affinity-chromatography using epitope-specific immunogen.
Concentration :	1 mg/ml
Storage Stability :	-15°C to -25°C/1 year(Do not lower than -25°C)

Observed Band : 59kD

Background : This gene encodes a molecular chaperone that is a member of the chaperonin containing TCP1 complex (CCT), also known as the TCP1 ring complex (TRiC). This complex consists of two identical stacked rings, each containing eight different proteins. Unfolded polypeptides enter the central cavity of the complex and are folded in an ATP-dependent manner. The complex folds various proteins, including actin and tubulin. Alternative splicing results in multiple transcript variants. Related pseudogenes have been identified on chromosomes 5 and 6. [provided by RefSeq, Oct 2009],

Function : function:Molecular chaperone; assist the folding of proteins upon ATP hydrolysis. Known to play a role, in vitro, in the folding of actin and tubulin.,similarity:Belongs to the chaperonin (HSP60) family.,similarity:Belongs to the TCP-1 chaperonin family.,subunit:Heterooligomeric complex of about 850 to 900 kDa that forms two stacked rings, 12 to 16 nm in diameter. Interacts with PACRG.,

Subcellular Location : Cytoplasm .

Expression : Adipose tissue,Brain,Cajal-Retzius cell,Cerebellum,Colon carcinoma,

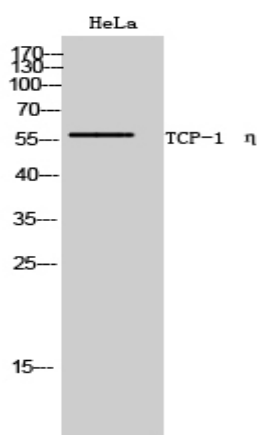
Sort : 17009

No4 : 1

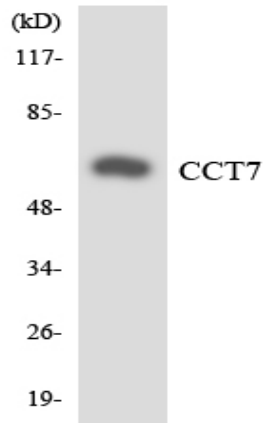
Host : Rabbit

Modifications : Unmodified

Products Images



Western Blot analysis of HeLa cells using TCP-1 η Polyclonal Antibody



Western blot analysis of the lysates from HT-29 cells using CCT7 antibody.