

## Tuberin Polyclonal Antibody

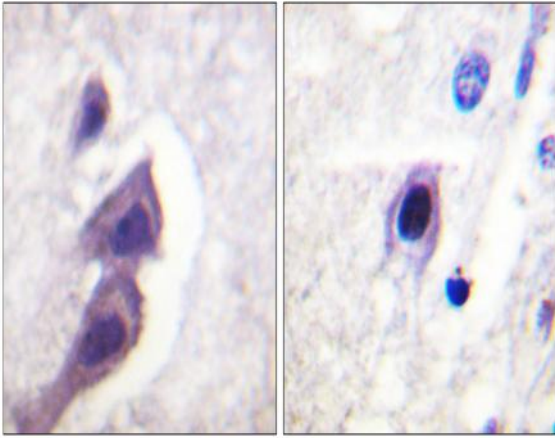
<b>Catalog No :</b>	YT4775
<b>Reactivity :</b>	Human;Mouse;Rat
<b>Applications :</b>	IHC;IF;ELISA
<b>Target :</b>	Tuberin
<b>Fields :</b>	>>Phospholipase D signaling pathway;>>p53 signaling pathway;>>Autophagy - animal;>>mTOR signaling pathway;>>PI3K-Akt signaling pathway;>>AMPK signaling pathway;>>Longevity regulating pathway;>>Cellular senescence;>>Thermogenesis;>>Insulin signaling pathway;>>Thyroid hormone signaling pathway;>>Human cytomegalovirus infection;>>Human papillomavirus infection;>>Herpes simplex virus 1 infection;>>Choline metabolism in cancer
<b>Gene Name :</b>	TSC2
<b>Protein Name :</b>	Tuberin
<b>Human Gene Id :</b>	7249
<b>Human Swiss Prot No :</b>	P49815
<b>Mouse Swiss Prot No :</b>	Q61037
<b>Rat Gene Id :</b>	24855
<b>Rat Swiss Prot No :</b>	P49816
<b>Immunogen :</b>	The antiserum was produced against synthesized peptide derived from human Tuberin/TSC2. AA range:1428-1477
<b>Specificity :</b>	Tuberin Polyclonal Antibody detects endogenous levels of Tuberin protein.
<b>Formulation :</b>	Liquid in PBS containing 50% glycerol, 0.5% BSA and 0.02% sodium azide.
<b>Source :</b>	Polyclonal, Rabbit,IgG

---

<b>Dilution :</b>	IHC 1:100 - 1:300. ELISA: 1:5000.. IF 1:50-200
<b>Purification :</b>	The antibody was affinity-purified from rabbit antiserum by affinity-chromatography using epitope-specific immunogen.
<b>Concentration :</b>	1 mg/ml
<b>Storage Stability :</b>	-15°C to -25°C/1 year(Do not lower than -25°C)
<b>Molecularweight :</b>	201kD
<b>Cell Pathway :</b>	Insulin Receptor; mTOR; B Cell Receptor; PI3K/Akt; AMPK
<b>Background :</b>	Mutations in this gene lead to tuberous sclerosis complex. Its gene product is believed to be a tumor suppressor and is able to stimulate specific GTPases. The protein associates with hamartin in a cytosolic complex, possibly acting as a chaperone for hamartin. Alternative splicing results in multiple transcript variants encoding different isoforms. [provided by RefSeq, Jul 2008],
<b>Function :</b>	alternative products:Additional isoforms seem to exist. Experimental confirmation may be lacking for some isoforms,disease:Defects in TSC2 are a cause of lymphangioleiomyomatosis (LAM) [MIM:606690]. LAM is a progressive and often fatal lung disease characterized by a diffuse proliferation of abnormal smooth muscle cells in the lungs. It affects almost exclusively young women and can occur as an isolated disorder or in association with tuberous sclerosis complex.,disease:Defects in TSC2 are the cause of tuberous sclerosis complex (TSC) [MIM:191100]. The molecular basis of TSC is a functional impairment of the tuberin-hamartin complex. TSC is an autosomal dominant multi-system disorder that affects especially the brain, kidneys, heart, and skin. TSC is characterized by hamartomas (benign overgrowths predominantly of a cell or tissue type that occurs normally in the organ) and hamartias (de
<b>Subcellular Location :</b>	Cytoplasm. Membrane; Peripheral membrane protein. At steady state found in association with membranes.
<b>Expression :</b>	Liver, brain, heart, lymphocytes, fibroblasts, biliary epithelium, pancreas, skeletal muscle, kidney, lung and placenta.
<b>Sort :</b>	23725
<b>No4 :</b>	1
<b>Host :</b>	Rabbit
<b>Modifications :</b>	Unmodified

---

## Products Images



Immunohistochemistry analysis of paraffin-embedded human brain tissue, using Tuberin/TSC2 Antibody. The picture on the right is blocked with the synthesized peptide.