

**TBX2 Polyclonal Antibody**

<b>Catalog No :</b>	YT4568
<b>Reactivity :</b>	Human;Mouse
<b>Applications :</b>	WB;IHC;IF;ELISA
<b>Target :</b>	TBX2
<b>Gene Name :</b>	TBX2
<b>Protein Name :</b>	T-box transcription factor TBX2
<b>Human Gene Id :</b>	6909
<b>Human Swiss Prot No :</b>	Q13207
<b>Mouse Gene Id :</b>	21385
<b>Mouse Swiss Prot No :</b>	Q60707
<b>Immunogen :</b>	The antiserum was produced against synthesized peptide derived from human TBX2. AA range:251-300
<b>Specificity :</b>	TBX2 Polyclonal Antibody detects endogenous levels of TBX2 protein.
<b>Formulation :</b>	Liquid in PBS containing 50% glycerol, 0.5% BSA and 0.02% sodium azide.
<b>Source :</b>	Polyclonal, Rabbit,IgG
<b>Dilution :</b>	WB 1:500 - 1:2000. IHC 1:100 - 1:300. ELISA: 1:20000.. IF 1:50-200
<b>Purification :</b>	The antibody was affinity-purified from rabbit antiserum by affinity-chromatography using epitope-specific immunogen.
<b>Concentration :</b>	1 mg/ml
<b>Storage Stability :</b>	-15°C to -25°C/1 year(Do not lower than -25°C)

---

**Observed Band :** 74kD

---

**Background :** This gene is a member of a phylogenetically conserved family of genes that share a common DNA-binding domain, the T-box. T-box genes encode transcription factors involved in the regulation of developmental processes. This gene product is the human homolog of mouse Tbx2, and shares strong sequence similarity with Drosophila omb protein. Expression studies indicate that this gene may have a potential role in tumorigenesis as an immortalizing agent. Transcript heterogeneity due to alternative polyadenylation has been noted for this gene. [provided by RefSeq, Jul 2008],

---

**Function :** function:Involved in the transcriptional regulation of genes required for mesoderm differentiation. Probably plays a role in limb pattern formation.,similarity:Contains 1 T-box DNA-binding domain.,tissue specificity:Expressed primarily in adult in kidney, lung, and placenta. Weak expression in heart and ovary.,

---

**Subcellular Location :** Nucleus .

---

**Expression :** Expressed primarily in adult in kidney, lung, and placenta. Weak expression in heart and ovary.

---

**Sort :** 16978

---

**No4 :** 1

---

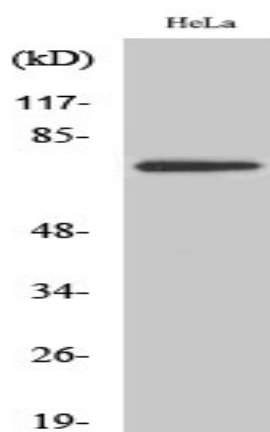
**Host :** Rabbit

---

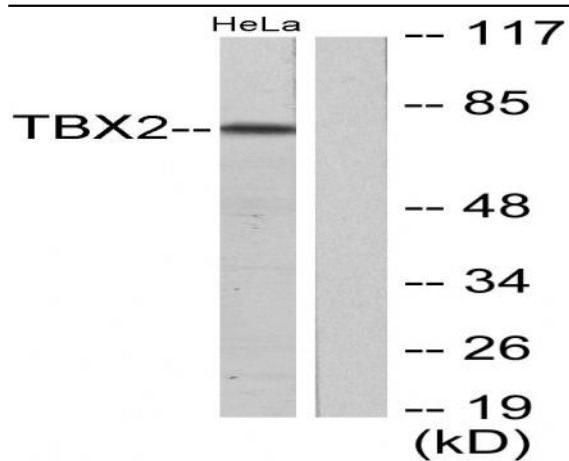
**Modifications :** Unmodified

---

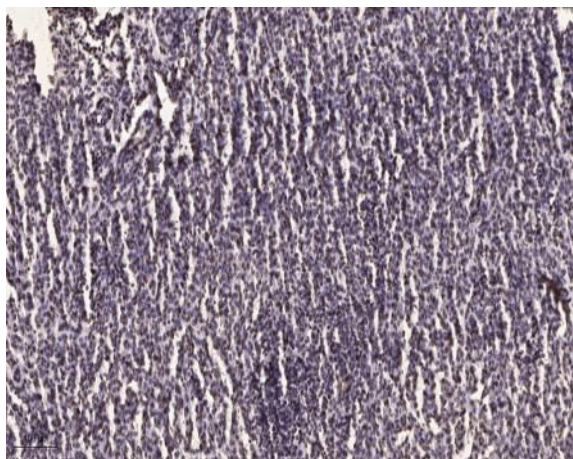
## Products Images



Western Blot analysis of various cells using TBX2 Polyclonal Antibody cells nucleus extracted by Minute TM Cytoplasmic and Nuclear Fractionation kit (SC-003, Inventbiotech, MN, USA).



Western blot analysis of lysates from HeLa cells, using TBX2 Antibody. The lane on the right is blocked with the synthesized peptide.



Immunohistochemical analysis of paraffin-embedded human brain tumor. 1, Antibody was diluted at 1:200(4° overnight). 2, Tris-EDTA,pH9.0 was used for antigen retrieval. 3,Secondary antibody was diluted at 1:200(room temperature, 45min).