

TSHZ2 Polyclonal Antibody

Catalog No :	YT4763
Reactivity :	Human;Mouse
Applications :	IHC;IF;ELISA
Target :	TSHZ2
Gene Name :	TSHZ2
Protein Name :	Teashirt homolog 2
Human Gene Id :	128553
Human Swiss Prot No :	Q9NRE2
Mouse Gene Id :	228911
Mouse Swiss Prot No :	Q68FE9
Immunogen :	The antiserum was produced against synthesized peptide derived from human TSH2. AA range:811-860
Specificity :	TSHZ2 Polyclonal Antibody detects endogenous levels of TSHZ2 protein.
Formulation :	Liquid in PBS containing 50% glycerol, 0.5% BSA and 0.02% sodium azide.
Source :	Polyclonal, Rabbit,IgG
Dilution :	IHC 1:100 - 1:300. IF 1:200 - 1:1000. ELISA: 1:20000. Not yet tested in other applications.
Purification :	The antibody was affinity-purified from rabbit antiserum by affinity-chromatography using epitope-specific immunogen.
Concentration :	1 mg/ml
Storage Stability :	-15°C to -25°C/1 year(Do not lower than -25°C)

Molecularweight : 115kD

Background : function:Transcriptional regulator involved in developmental processes
 .,PTM:Sumoylated.,sequence caution:The sequence differs from that shown due translation of a 3'-UTR region.,similarity:Belongs to the teashirt C2H2-type zinc-finger protein family.,similarity:Contains 1 homeobox DNA-binding domain.,similarity:Contains 5 C2H2-type zinc fingers.,

Function : function:Transcriptional regulator involved in developmental processes
 .,PTM:Sumoylated.,sequence caution:The sequence differs from that shown due translation of a 3'-UTR region.,similarity:Belongs to the teashirt C2H2-type zinc-finger protein family.,similarity:Contains 1 homeobox DNA-binding domain.,similarity:Contains 5 C2H2-type zinc fingers.,

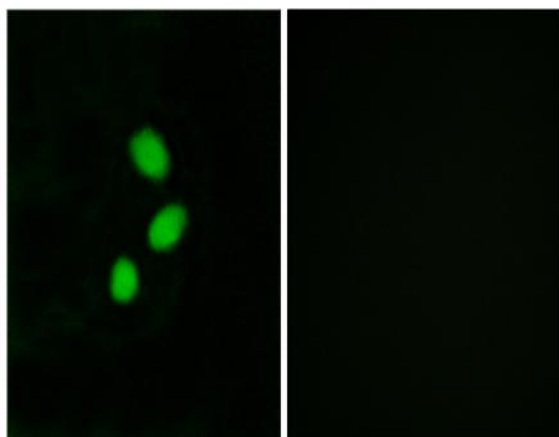
Subcellular Location : Nucleus .

Expression : Expressed in brain; strongly reduced in post-mortem elderly subjects with Alzheimer disease.

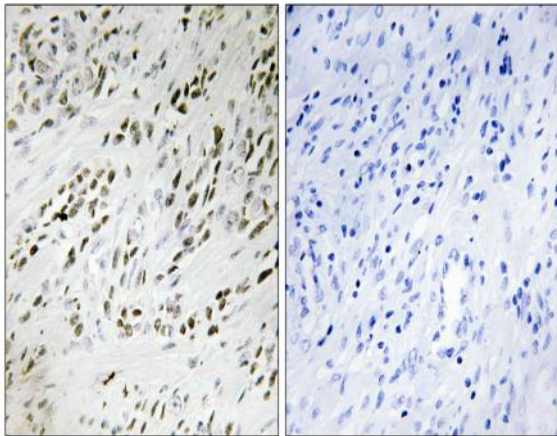
Sort : 23649

No4 : 1

Products Images



Immunofluorescence analysis of MCF7 cells, using TSH2 Antibody. The picture on the right is blocked with the synthesized peptide.



Immunohistochemistry analysis of paraffin-embedded human prostate carcinoma tissue, using TSH2 Antibody. The picture on the right is blocked with the synthesized peptide.