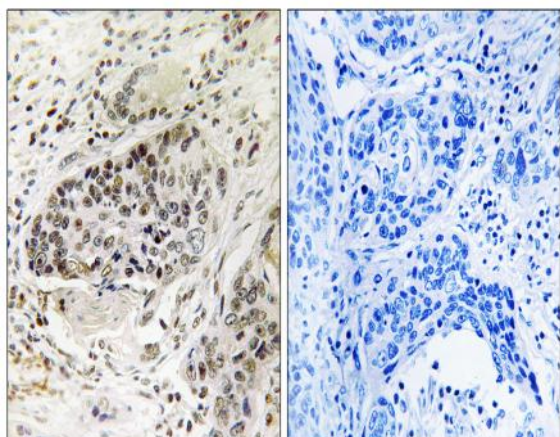


X11 β Polyclonal Antibody

Catalog No :	YT4910
Reactivity :	Human;Mouse;Rat
Applications :	IHC;IF;WB;ELISA
Target :	X11 β
Gene Name :	APBA2
Protein Name :	Amyloid beta A4 precursor protein-binding family A member 2
Human Gene Id :	321
Human Swiss Prot No :	Q99767
Mouse Gene Id :	11784
Mouse Swiss Prot No :	P98084
Rat Gene Id :	83610
Rat Swiss Prot No :	O35431
Immunogen :	The antiserum was produced against synthesized peptide derived from human APBA2. AA range:371-420
Specificity :	X11 β Polyclonal Antibody detects endogenous levels of X11 β protein.
Formulation :	Liquid in PBS containing 50% glycerol, 0.5% BSA and 0.02% sodium azide.
Source :	Polyclonal, Rabbit,IgG
Dilution :	WB 1:500-2000 IHC 1:100 - 1:300. ELISA: 1:20000.. IF 1:50-200
Purification :	The antibody was affinity-purified from rabbit antiserum by affinity-chromatography using epitope-specific immunogen.

Concentration :	1 mg/ml
Storage Stability :	-15°C to -25°C/1 year(Do not lower than -25°C)
Observed Band :	83kD
Background :	<p>amyloid beta precursor protein binding family A member 2(APBA2) Homo sapiens The protein encoded by this gene is a member of the X11 protein family. It is a neuronal adapter protein that interacts with the Alzheimer's disease amyloid precursor protein (APP). It stabilizes APP and inhibits production of proteolytic APP fragments including the A beta peptide that is deposited in the brains of Alzheimer's disease patients. This gene product is believed to be involved in signal transduction processes. It is also regarded as a putative vesicular trafficking protein in the brain that can form a complex with the potential to couple synaptic vesicle exocytosis to neuronal cell adhesion. Multiple transcript variants encoding different isoforms have been found for this gene. [provided by RefSeq, Jul 2008],</p>
Function :	<p>domain:Composed of an N-terminal domain that binds STXBP1, a middle phosphotyrosine-binding domain (PID/PTB) that mediates binding with the cytoplasmic domain of the beta-amyloid precursor protein, and two C-terminal PDZ domains thought to attach proteins to the plasma membrane.,function:Putative function in synaptic vesicle exocytosis by binding to STXBP1, an essential component of the synaptic vesicle exocytotic machinery. May modulate processing of the beta-amyloid precursor protein (APP) and hence formation of beta-APP.,similarity:Contains 1 PID domain.,similarity:Contains 2 PDZ (DHR) domains.,subunit:Part of a multimeric complex containing STXBP1 and syntaxin-1. Binds to the cytoplasmic domain of amyloid protein beta, and to the nuclear factor NF-kappa-B/p65 via its PDZ domain. Interacts with the amino-terminal domain of APBA2BP.,tissue specificity:Brain.,</p>
Subcellular Location :	plasma membrane,synaptic vesicle,
Expression :	Brain.
Sort :	24337
Host :	Rabbit
Modifications :	Unmodified

Products Images



Immunohistochemistry analysis of paraffin-embedded human lung carcinoma tissue, using APBA2 Antibody. The picture on the right is blocked with the synthesized peptide.