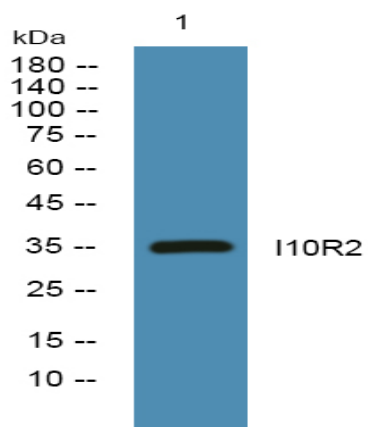


I10R2 Polyclonal Antibody

Catalog No :	YN0207
Reactivity :	Human;Mouse
Applications :	WB;ELISA
Target :	I10R2
Fields :	>>Cytokine-cytokine receptor interaction;>>Viral protein interaction with cytokine and cytokine receptor;>>JAK-STAT signaling pathway;>>Toxoplasmosis;>>Tuberculosis;>>Human cytomegalovirus infection
Gene Name :	IL10RB CRFB4 D21S58 D21S66
Protein Name :	Interleukin-10 receptor subunit beta (IL-10 receptor subunit beta) (IL-10R subunit beta) (IL-10RB) (Cytokine receptor class-II member 4) (Cytokine receptor family 2 member 4) (CRF2-4) (Interleukin-10
Human Gene Id :	3588
Human Swiss Prot No :	Q08334
Mouse Swiss Prot No :	Q61190
Immunogen :	Synthesized peptide derived from human protein . at AA range: 240-320
Specificity :	I10R2 Polyclonal Antibody detects endogenous levels of protein.
Formulation :	Liquid in PBS containing 50% glycerol, and 0.02% sodium azide.
Source :	Polyclonal, Rabbit,IgG
Dilution :	WB 1:500-2000 ELISA 1:5000-20000
Purification :	The antibody was affinity-purified from rabbit antiserum by affinity-chromatography using epitope-specific immunogen.
Concentration :	1 mg/ml

Storage Stability :	-15 °C to -25 °C/1 year(Do not lower than -25 °C)
Observed Band :	35kD
Cell Pathway :	Cytokine-cytokine receptor interaction;Jak_STAT;
Background :	<p>The protein encoded by this gene belongs to the cytokine receptor family. It is an accessory chain essential for the active interleukin 10 receptor complex. Coexpression of this and IL10RA proteins has been shown to be required for IL10-induced signal transduction. This gene and three other interferon receptor genes, IFAR2, IFNAR1, and IFNGR2, form a class II cytokine receptor gene cluster located in a small region on chromosome 21. [provided by RefSeq, Jul 2008],</p>
Function :	<p>disease:Defects in IL10RB are associated with susceptibility to hepatitis B virus infection (HBV infection) [MIM:610424]. Approximately one third of all cases of cirrhosis and half of all cases of hepatocellular carcinoma can be attributed to chronic HBV infection. HBV infection may result in subclinical or asymptomatic infection, acute self-limited hepatitis, or fulminant hepatitis requiring liver transplantation.,function:Receptor for IL10 and IL22. Serves as an accessory chain essential for the active IL10 receptor complex and to initiate IL10-induced signal transduction events.,similarity:Belongs to the type II cytokine receptor family.,similarity:Contains 2 fibronectin type-III domains.,</p>
Subcellular Location :	Membrane; Single-pass type I membrane protein.
Expression :	Fetal brain,Kidney,Synovial membrane tissue,
Sort :	19533
No4 :	1
Host :	Rabbit
Modifications :	Unmodified

Products Images



Western blot analysis of lysates from Jurkat cells, primary antibody was diluted at 1:1000, 4° over night