

TAF I p48 Polyclonal Antibody

| | |
|------------------------------|---|
| Catalog No : | YT4525 |
| Reactivity : | Human;Rat |
| Applications : | WB;IHC;IF;ELISA |
| Target : | TAF I p48 |
| Gene Name : | TAF1A |
| Protein Name : | TATA box-binding protein-associated factor RNA polymerase I subunit A |
| Human Gene Id : | 9015 |
| Human Swiss Prot No : | Q15573 |
| Mouse Swiss Prot No : | P97357 |
| Rat Gene Id : | 360893 |
| Rat Swiss Prot No : | Q3B7U2 |
| Immunogen : | The antiserum was produced against synthesized peptide derived from human TAF1A. AA range:301-350 |
| Specificity : | TAF I p48 Polyclonal Antibody detects endogenous levels of TAF I p48 protein. |
| Formulation : | Liquid in PBS containing 50% glycerol, 0.5% BSA and 0.02% sodium azide. |
| Source : | Polyclonal, Rabbit,IgG |
| Dilution : | WB 1:500 - 1:2000. IHC 1:100 - 1:300. ELISA: 1:20000.. IF 1:50-200 |
| Purification : | The antibody was affinity-purified from rabbit antiserum by affinity-chromatography using epitope-specific immunogen. |
| Concentration : | 1 mg/ml |

Storage Stability : -15°C to -25°C/1 year(Do not lower than -25°C)

Observed Band : 53kD

Background : This gene encodes a subunit of the RNA polymerase I complex, Selectivity Factor I (SLI). The encoded protein is a TATA box-binding protein-associated factor that plays a role in the assembly of the RNA polymerase I preinitiation complex. Alternate splicing results in multiple transcript variants encoding multiple isoforms.[provided by RefSeq, Jan 2011],

Function : function:Component of the transcription factor SL1/TIFIB complex involved in the assembly of the PIC (preinitiation complex).,subunit:Component of the transcription factor SL1/TIFIB complex which is composed of TBP and at least TAF1A, TAF1B and TAF1C. In the complex, interacts directly with TBP, TAF1B and TAF1C. Interaction of the SL1/TIFIB subunits with TBP excludes interaction with the transcription factor IID (TFIID) subunits. This mutually exclusive binding directs the formation of promoter and RNA polymerase-selective TBP-TAF complexes.,

Subcellular Location : Nucleus.

Expression : Embryo,Skin,

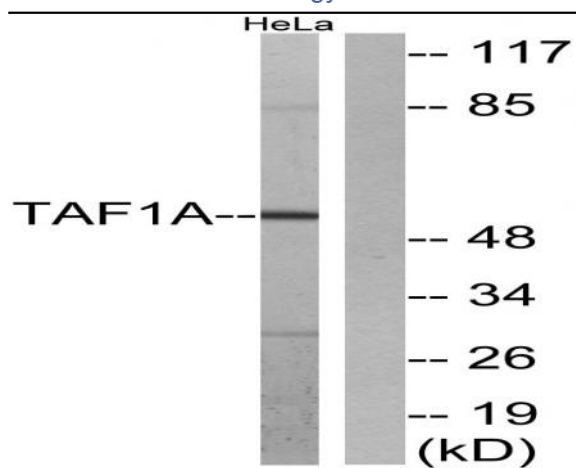
Sort : 16886

No4 : 1

Host : Rabbit

Modifications : Unmodified

Products Images



Western blot analysis of lysates from HeLa cells, using TAF1A Antibody. The lane on the right is blocked with the synthesized peptide.



Immunohistochemical analysis of paraffin-embedded human spleen. 1, Tris-EDTA, pH 9.0 was used for antigen retrieval. 2 Antibody was diluted at 1:200 (4° overnight). 3, Secondary antibody was diluted at 1:200 (room temperature, 45min).