

TAAR3 Polyclonal Antibody

Catalog No :	YT4518
Reactivity :	Human
Applications :	WB;IF;ELISA
Target :	TAAR3
Gene Name :	TAAR3
Protein Name :	Putative trace amine-associated receptor 3
Human Gene Id :	9288
Human Swiss Prot No :	Q9P1P4
Mouse Swiss Prot No :	Q5QD16
Immunogen :	The antiserum was produced against synthesized peptide derived from human TAAR3. AA range:206-255
Specificity :	TAAR3 Polyclonal Antibody detects endogenous levels of TAAR3 protein.
Formulation :	Liquid in PBS containing 50% glycerol, 0.5% BSA and 0.02% sodium azide.
Source :	Polyclonal, Rabbit,IgG
Dilution :	WB 1:500 - 1:2000. IF 1:200 - 1:1000. ELISA: 1:10000. Not yet tested in other applications.
Purification :	The antibody was affinity-purified from rabbit antiserum by affinity-chromatography using epitope-specific immunogen.
Concentration :	1 mg/ml
Storage Stability :	-15°C to -25°C/1 year(Do not lower than -25°C)
Observed Band :	39kD

Background : caution:Seems to be a non functional due to its divergence in positions 20 to 45 (due to a frameshift) but does not seem to be the product of a pseudogene.,function:Orphan receptor.,similarity:Belongs to the G-protein coupled receptor 1 family.,tissue specificity:Not expressed in the pons, thalamus, globus pallidus, caudate, putamen or cerebellum.,

Function : caution:Seems to be a non functional due to its divergence in positions 20 to 45 (due to a frameshift) but does not seem to be the product of a pseudogene.,function:Orphan receptor.,similarity:Belongs to the G-protein coupled receptor 1 family.,tissue specificity:Not expressed in the pons, thalamus, globus pallidus, caudate, putamen or cerebellum.,

Subcellular Location : Cell membrane ; Multi-pass membrane protein .

Expression : Not expressed in the pons, thalamus, globus pallidus, caudate, putamen or cerebellum.

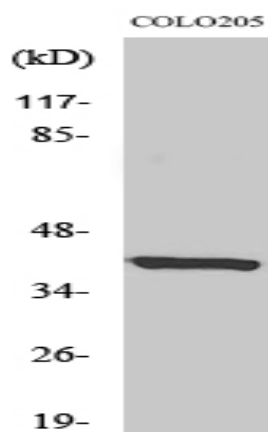
Sort : 16872

No4 : 1

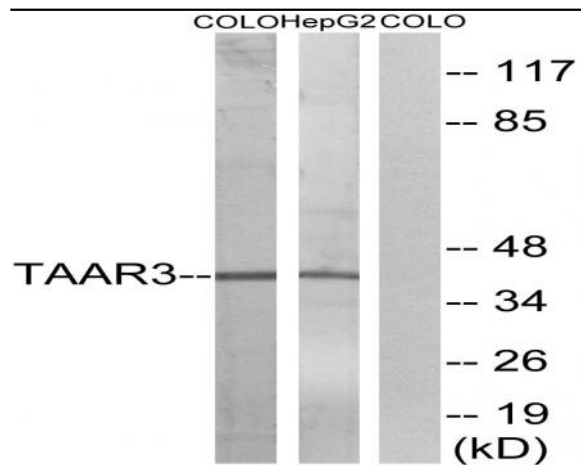
Host : Rabbit

Modifications : Unmodified

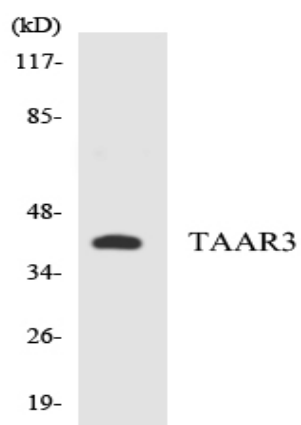
Products Images



Western Blot analysis of various cells using TAAR3 Polyclonal Antibody



Western blot analysis of lysates from COLO and HepG2 cells, using TAAR3 Antibody. The lane on the right is blocked with the synthesized peptide.



Western blot analysis of the lysates from HepG2 cells using TAAR3 antibody.