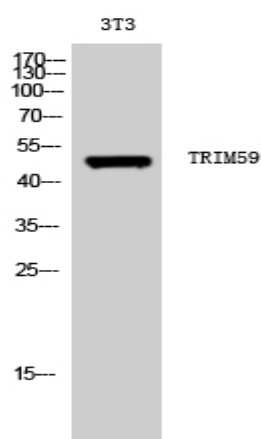


TRIM59 Polyclonal Antibody

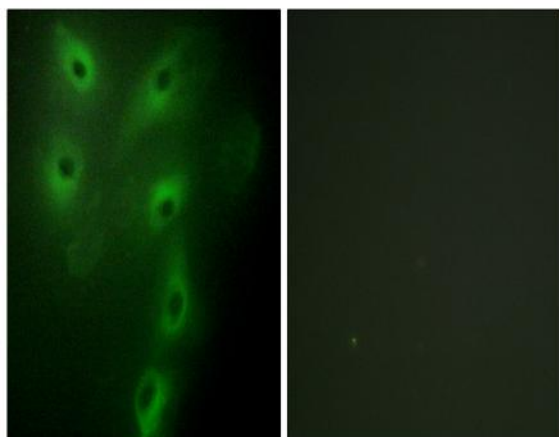
Catalog No :	YT4737
Reactivity :	Human;Mouse
Applications :	WB;IHC;IF;ELISA
Target :	TRIM59
Gene Name :	TRIM59
Protein Name :	Tripartite motif-containing protein 59
Human Gene Id :	286827
Human Swiss Prot No :	Q8IWR1
Mouse Gene Id :	66949
Mouse Swiss Prot No :	Q922Y2
Immunogen :	The antiserum was produced against synthesized peptide derived from human TRIM59. AA range:191-240
Specificity :	TRIM59 Polyclonal Antibody detects endogenous levels of TRIM59 protein.
Formulation :	Liquid in PBS containing 50% glycerol, 0.5% BSA and 0.02% sodium azide.
Source :	Polyclonal, Rabbit,IgG
Dilution :	WB 1:500 - 1:2000. IHC 1:100 - 1:300. IF 1:200 - 1:1000. ELISA: 1:40000. Not yet tested in other applications.
Purification :	The antibody was affinity-purified from rabbit antiserum by affinity-chromatography using epitope-specific immunogen.
Concentration :	1 mg/ml
Storage Stability :	-15°C to -25°C/1 year(Do not lower than -25°C)

Observed Band :	47kD
Background :	similarity:Belongs to the TRIM/RBCC family.,similarity:Contains 1 B box-type zinc finger.,similarity:Contains 1 RING-type zinc finger.,
Function :	similarity:Belongs to the TRIM/RBCC family.,similarity:Contains 1 B box-type zinc finger.,similarity:Contains 1 RING-type zinc finger.,
Subcellular Location :	Endoplasmic reticulum membrane ; Single-pass membrane protein .
Expression :	Human testis,
Tag :	orthogonal
Sort :	1249
No4 :	1
Host :	Rabbit
Modifications :	Unmodified

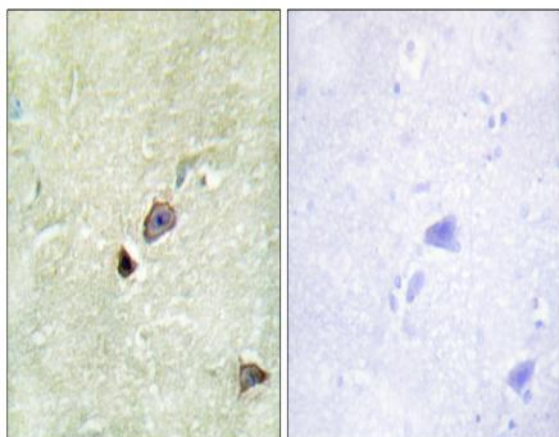
Products Images



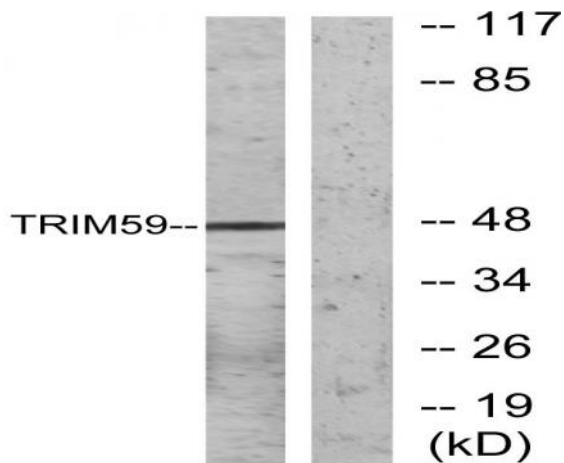
Western Blot analysis of 3T3 cells using TRIM59 Polyclonal Antibody. Secondary antibody(catalog#:RS0002) was diluted at 1:20000



Immunofluorescence analysis of HeLa cells, using TRIM59 Antibody. The picture on the right is blocked with the synthesized peptide.



Immunohistochemistry analysis of paraffin-embedded human brain tissue, using TRIM59 Antibody. The picture on the right is blocked with the synthesized peptide.



Western blot analysis of lysates from NIH/3T3 cells, using TRIM59 Antibody. The lane on the right is blocked with the synthesized peptide.