

TRAPPC5 Polyclonal Antibody

Catalog No :	YT4729
Reactivity :	Human;Mouse;Rat
Applications :	IHC;IF;ELISA
Target :	TRAPPC5
Gene Name :	TRAPPC5
Protein Name :	Trafficking protein particle complex subunit 5
Human Gene Id :	126003
Human Swiss Prot No :	Q8IUR0
Mouse Gene Id :	66682
Mouse Swiss Prot No :	Q9CQA1
Immunogen :	Synthesized peptide derived from the Internal region of human TRAPPC5.
Specificity :	TRAPPC5 Polyclonal Antibody detects endogenous levels of TRAPPC5 protein.
Formulation :	Liquid in PBS containing 50% glycerol, 0.5% BSA and 0.02% sodium azide.
Source :	Polyclonal, Rabbit,IgG
Dilution :	IHC 1:100 - 1:300. ELISA: 1:5000.. IF 1:50-200
Purification :	The antibody was affinity-purified from rabbit antiserum by affinity-chromatography using epitope-specific immunogen.
Concentration :	1 mg/ml
Storage Stability :	-15°C to -25°C/1 year(Do not lower than -25°C)

Molecularweight : 21kD

Background : function:May play a role in vesicular transport from endoplasmic reticulum to Golgi.,similarity:Belongs to the TRAPP small subunits family. BET3 subfamily.,subunit:Part of the multisubunit TRAPP (transport protein particle) complex.,

Function : function:May play a role in vesicular transport from endoplasmic reticulum to Golgi.,similarity:Belongs to the TRAPP small subunits family. BET3 subfamily.,subunit:Part of the multisubunit TRAPP (transport protein particle) complex.,

Subcellular Location : Golgi apparatus, cis-Golgi network . Endoplasmic reticulum .

Expression : Skin,

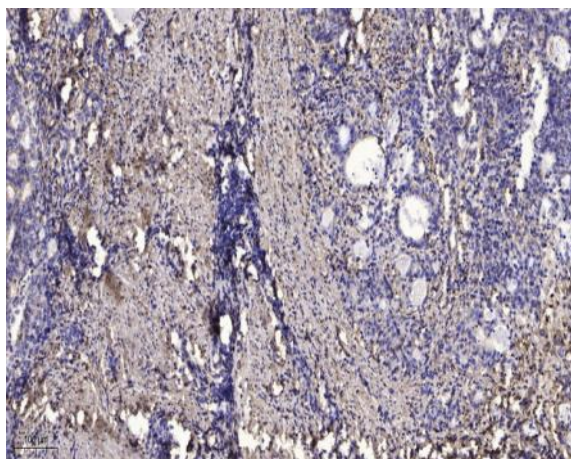
Sort : 23507

No4 : 1

Host : Rabbit

Modifications : Unmodified

Products Images



Immunohistochemical analysis of paraffin-embedded human Gastric adenocarcinoma. 1, Antibody was diluted at 1:200(4° overnight). 2, Tris-EDTA,pH9.0 was used for antigen retrieval. 3,Secondary antibody was diluted at 1:200(room temperature, 45min).