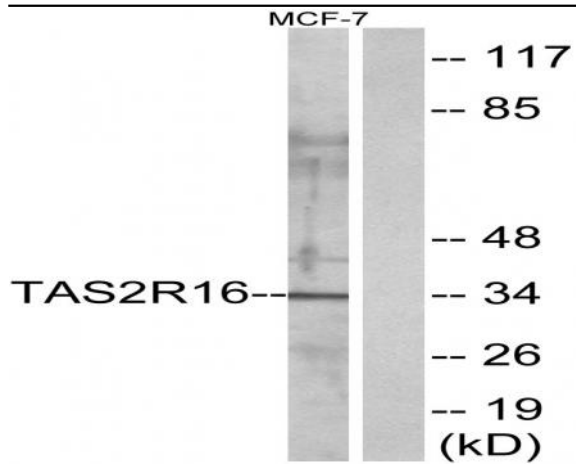


T2R16 Polyclonal Antibody

Catalog No :	YT4507
Reactivity :	Human;Rat;Mouse;
Applications :	WB;IF;ELISA
Target :	T2R16
Fields :	>>Taste transduction
Gene Name :	TAS2R16
Protein Name :	Taste receptor type 2 member 16
Human Gene Id :	50833
Human Swiss Prot No :	Q9NYV7
Mouse Swiss Prot No :	P59529
Immunogen :	The antiserum was produced against synthesized peptide derived from human TAS2R16. AA range:136-185
Specificity :	T2R16 Polyclonal Antibody detects endogenous levels of T2R16 protein.
Formulation :	Liquid in PBS containing 50% glycerol, 0.5% BSA and 0.02% sodium azide.
Source :	Polyclonal, Rabbit,IgG
Dilution :	WB 1:500 - 1:2000. IF 1:200 - 1:1000. ELISA: 1:20000. Not yet tested in other applications.
Purification :	The antibody was affinity-purified from rabbit antiserum by affinity-chromatography using epitope-specific immunogen.
Concentration :	1 mg/ml
Storage Stability :	-15°C to -25°C/1 year(Do not lower than -25°C)

Observed Band :	34kD
Cell Pathway :	Taste transduction;
Background :	<p>This gene encodes a member of a family of candidate taste receptors that are members of the G protein-coupled receptor superfamily. These family members are specifically expressed by taste receptor cells of the tongue and palate epithelia. Each of these apparently intronless genes encodes a 7-transmembrane receptor protein, functioning as a bitter taste receptor. This gene is clustered with another 3 candidate taste receptor genes in chromosome 7 and is genetically linked to loci that influence bitter perception. [provided by RefSeq, Jul 2008],</p>
Function :	<p>function:Gustducin-coupled receptor implicated in the perception of bitter compounds in the oral cavity and the gastrointestinal tract. Signals through PLCB2 and the calcium-regulated cation channel TRPM5.,miscellaneous:Confers bitter perception of salicin to non-taster mice.,miscellaneous:Several bitter taste receptors are expressed in a single taste receptor cell.,polymorphism:The Lys-172 polymorphism in TAS2R16 is associated with genetic susceptibility to alcoholism [MIM:103780].,similarity:Belongs to the G-protein coupled receptor T2R family.,tissue specificity:Expressed in a subset of gustducin-positive taste receptor cells of the tongue.,</p>
Subcellular Location :	Cell membrane ; Multi-pass membrane protein .
Expression :	Expressed in a subset of gustducin-positive taste receptor cells of the tongue. Expressed in circumvallate papillae and testis (PubMed:16720576).
Sort :	16857
No4 :	1
Host :	Rabbit
Modifications :	Unmodified

Products Images



Western blot analysis of lysates from MCF-7 cells, using TAS2R16 Antibody. The lane on the right is blocked with the synthesized peptide.