

## TRAP220 Polyclonal Antibody

<b>Catalog No :</b>	YT4725
<b>Reactivity :</b>	Human;Mouse
<b>Applications :</b>	WB;IF;ELISA
<b>Target :</b>	TRAP220
<b>Fields :</b>	>>Endocrine resistance;>>Thyroid hormone signaling pathway
<b>Gene Name :</b>	MED1
<b>Protein Name :</b>	Mediator of RNA polymerase II transcription subunit 1
<b>Human Gene Id :</b>	5469
<b>Human Swiss Prot No :</b>	Q15648
<b>Mouse Gene Id :</b>	19014
<b>Mouse Swiss Prot No :</b>	Q925J9
<b>Immunogen :</b>	The antiserum was produced against synthesized peptide derived from human PPAR-BP. AA range:1423-1472
<b>Specificity :</b>	TRAP220 Polyclonal Antibody detects endogenous levels of TRAP220 protein.
<b>Formulation :</b>	Liquid in PBS containing 50% glycerol, 0.5% BSA and 0.02% sodium azide.
<b>Source :</b>	Polyclonal, Rabbit,IgG
<b>Dilution :</b>	WB 1:500 - 1:2000. IF 1:200 - 1:1000. ELISA: 1:10000. Not yet tested in other applications.
<b>Purification :</b>	The antibody was affinity-purified from rabbit antiserum by affinity-chromatography using epitope-specific immunogen.
<b>Concentration :</b>	1 mg/ml

**Storage Stability :** -15°C to -25°C/1 year(Do not lower than -25°C)

**Molecularweight :** 168kD

**Background :** The activation of gene transcription is a multistep process that is triggered by factors that recognize transcriptional enhancer sites in DNA. These factors work with co-activators to direct transcriptional initiation by the RNA polymerase II apparatus. The protein encoded by this gene is a subunit of the CRSP (cofactor required for SP1 activation) complex, which, along with TFIID, is required for efficient activation by SP1. This protein is also a component of other multisubunit complexes e.g. thyroid hormone receptor-(TR-) associated proteins which interact with TR and facilitate TR function on DNA templates in conjunction with initiation factors and cofactors. It also regulates p53-dependent apoptosis and it is essential for adipogenesis. This protein is known to have the ability to self-oligomerize. [provided by RefSeq, Jul 2008],

**Function :** function:Component of the Mediator complex, a coactivator involved in the regulated transcription of nearly all RNA polymerase II-dependent genes. Mediator functions as a bridge to convey information from gene-specific regulatory proteins to the basal RNA polymerase II transcription machinery. Mediator is recruited to promoters by direct interactions with regulatory proteins and serves as a scaffold for the assembly of a functional preinitiation complex with RNA polymerase II and the general transcription factors.,PTM:Phosphorylated by MAPK1 or MAPK3 during G2/M phase which may enhance protein stability and promote entry into the nucleolus. Phosphorylated upon DNA damage, probably by ATM or ATR.,sequence caution:Contaminating sequence. Potential poly-A sequence.,similarity:Belongs to the Mediator complex subunit 1 family.,subcellular location:A subset of the protein may enter the nucleol

**Subcellular Location :** Nucleus . A subset of the protein may enter the nucleolus subsequent to phosphorylation by MAPK1 or MAPK3.

**Expression :** Ubiquitously expressed.

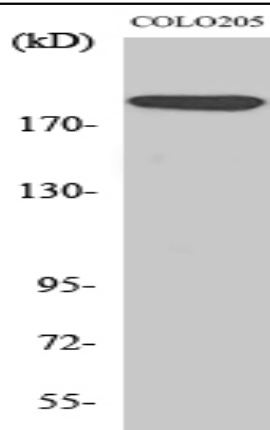
**Sort :** 23502

**No4 :** 1

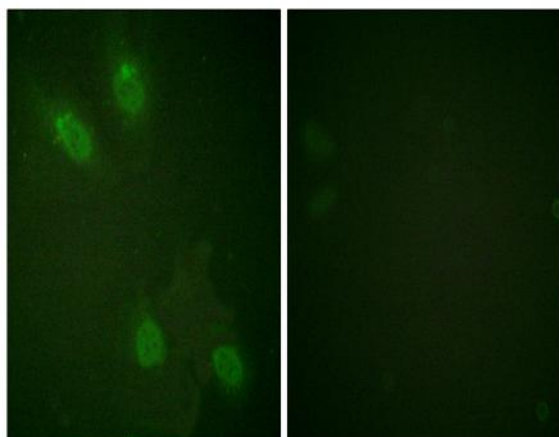
**Host :** Rabbit

**Modifications :** Unmodified

**Products Images**



Western Blot analysis of various cells using TRAP220 Polyclonal Antibody. Secondary antibody(catalog#:RS0002) was diluted at 1:20000 cells nucleus extracted by Minute TM Cytoplasmic and Nuclear Fractionation kit (SC-003, Inventbiotech, MN, USA).



Immunofluorescence analysis of HeLa cells, using PPAR-BP Antibody. The picture on the right is blocked with the synthesized peptide.