

Synuclein- β Polyclonal Antibody

Catalog No :	YT4498
Reactivity :	Human;Mouse;Rat
Applications :	WB;IHC;IF;ELISA
Target :	Synuclein- β
Gene Name :	SNCB
Protein Name :	Beta-synuclein
Human Gene Id :	6620
Human Swiss Prot No :	Q16143
Mouse Gene Id :	104069
Mouse Swiss Prot No :	Q91ZZ3
Rat Gene Id :	113893
Rat Swiss Prot No :	Q63754
Immunogen :	The antiserum was produced against synthesized peptide derived from human Synuclein beta. AA range:85-134
Specificity :	Synuclein- β Polyclonal Antibody detects endogenous levels of Synuclein- β protein.
Formulation :	Liquid in PBS containing 50% glycerol, 0.5% BSA and 0.02% sodium azide.
Source :	Polyclonal, Rabbit,IgG
Dilution :	WB 1:500 - 1:2000. IHC 1:100 - 1:300. IF 1:200 - 1:1000. ELISA: 1:20000. Not yet tested in other applications.
Purification :	The antibody was affinity-purified from rabbit antiserum by affinity-

chromatography using epitope-specific immunogen.

Concentration : 1 mg/ml

Storage Stability : -15°C to -25°C/1 year(Do not lower than -25°C)

Observed Band : 14kD

Background : This gene encodes a member of a small family of proteins that inhibit phospholipase D2 and may function in neuronal plasticity. The encoded protein is abundant in lesions of patients with Alzheimer disease. A mutation in this gene was found in individuals with dementia with Lewy bodies. Alternative splicing results in multiple transcript variants. [provided by RefSeq, Dec 2015],

Function : disease:Brain iron accumulation type 1 (NBIA1, also called Hallervorden-Spatz syndrome), a rare neuroaxonal dystrophy, is histologically characterized by axonal spheroids, iron deposition, Lewy body (LB)-like intraneuronal inclusions, glial inclusions and neurofibrillary tangles. SNCA is found in spheroids but not in inclusions.,function:Non-amyloid component of senile plaques found in Alzheimer disease. Could act as a regulator of SNCA aggregation process. Protects neurons from staurosporine and 6-hydroxy dopamine (6OHDA)-stimulated caspase activation in a TP53/p53-dependent manner. Contributes to restore the SNCA anti-apoptotic function abolished by 6OHDA. Not found in the Lewy bodies associated with Parkinson disease.,PTM:Phosphorylated. Phosphorylation by G-protein coupled receptor kinases (GRK) is more efficient than phosphorylation by CK1, CK2 and CaM-kinase II.,similarity:Belongs

Subcellular Location : Cytoplasm.

Expression : Expressed predominantly in brain; concentrated in presynaptic nerve terminals.

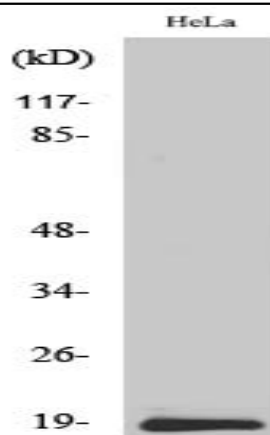
Sort : 16837

No4 : 1

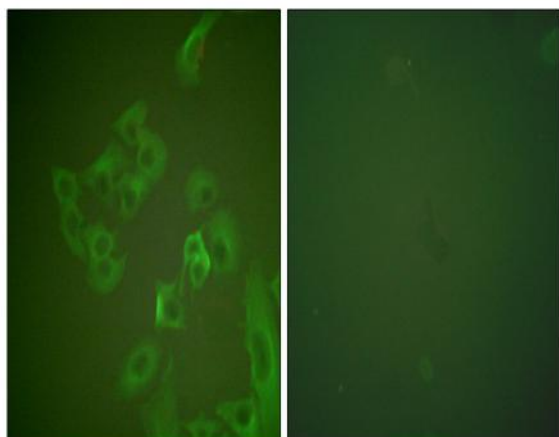
Host : Rabbit

Modifications : Unmodified

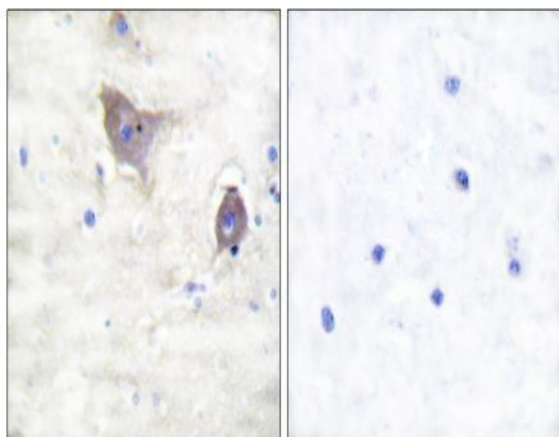
Products Images



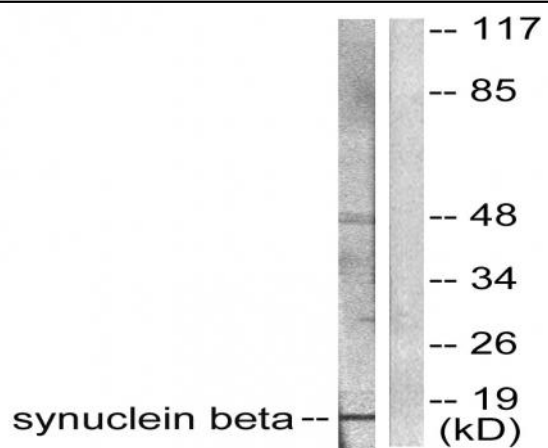
Western Blot analysis of various cells using Synuclein- β Polyclonal Antibody



Immunofluorescence analysis of A549 cells, using Synuclein beta Antibody. The picture on the right is blocked with the synthesized peptide.



Immunohistochemistry analysis of paraffin-embedded human brain tissue, using Synuclein beta Antibody. The picture on the right is blocked with the synthesized peptide.



Western blot analysis of lysates from HeLa cells, using Synuclein beta Antibody. The lane on the right is blocked with the synthesized peptide.