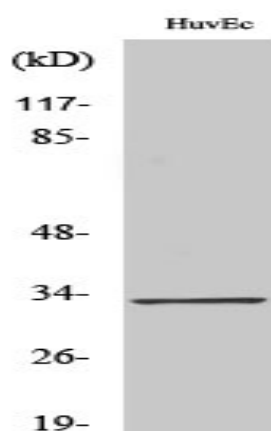


Tra-2 α Polyclonal Antibody

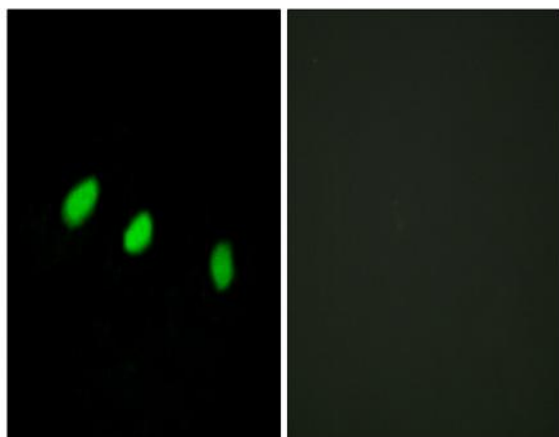
Catalog No :	YT4713
Reactivity :	Human;Mouse
Applications :	WB;IHC;IF;ELISA
Target :	Tra-2 α
Fields :	>>Spliceosome;>>Alcoholic liver disease
Gene Name :	TRA2A
Protein Name :	Transformer-2 protein homolog alpha
Human Gene Id :	29896
Human Swiss Prot No :	Q13595
Mouse Swiss Prot No :	Q6PFR5
Immunogen :	The antiserum was produced against synthesized peptide derived from human TRA-2 alpha. AA range:221-270
Specificity :	Tra-2 α Polyclonal Antibody detects endogenous levels of Tra-2 α protein.
Formulation :	Liquid in PBS containing 50% glycerol, 0.5% BSA and 0.02% sodium azide.
Source :	Polyclonal, Rabbit,IgG
Dilution :	WB 1:500 - 1:2000. IHC 1:100 - 1:300. IF 1:200 - 1:1000. ELISA: 1:20000. Not yet tested in other applications.
Purification :	The antibody was affinity-purified from rabbit antiserum by affinity-chromatography using epitope-specific immunogen.
Concentration :	1 mg/ml
Storage Stability :	-15°C to -25°C/1 year(Do not lower than -25°C)

Observed Band :	33kD
Cell Pathway :	Spliceosome;
Background :	This gene is a member of the transformer 2 homolog family and encodes a protein with several RRM (RNA recognition motif) domains. This phosphorylated nuclear protein binds to specific RNA sequences and plays a role in the regulation of pre-mRNA splicing. Alternatively spliced transcript variants have been found for this gene. [provided by RefSeq, Sep 2013],
Function :	function:Sequence-specific RNA-binding protein which participates in the control of pre-mRNA splicing.,PTM:Phosphorylated in the RS domains.,similarity:Belongs to the splicing factor SR family.,similarity:Contains 1 RRM (RNA recognition motif) domain.,subunit:Binds to A3 enhancer proteins SRp75, SRp55, SRp40 and SRp30.,
Subcellular Location :	Nucleus .
Expression :	Cervix carcinoma,Epithelium,Hepatocyte,Lung,Testis,Uterus,
Sort :	23466
No4 :	1
Host :	Rabbit
Modifications :	Unmodified

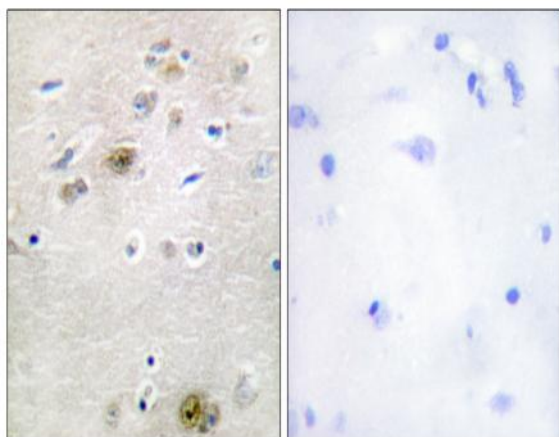
Products Images



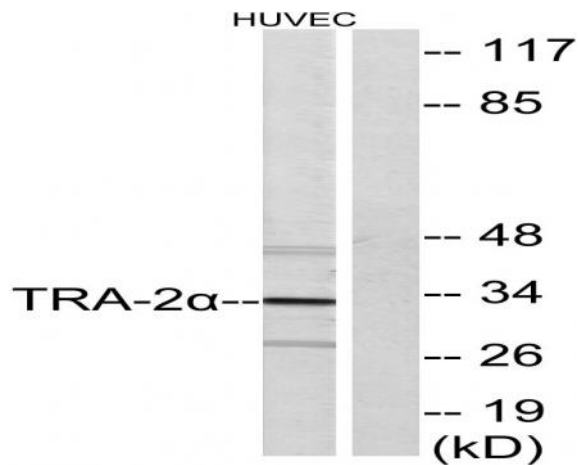
Western Blot analysis of various cells using Tra-2 α Polyclonal Antibody diluted at 1:500. Secondary antibody(catalog#:RS0002) was diluted at 1:20000 cells nucleus extracted by Minute TM Cytoplasmic and Nuclear Fractionation kit (SC-003, Inventbiotech, MN, USA).



Immunofluorescence analysis of HeLa cells, using TRA-2 alpha Antibody. The picture on the right is blocked with the synthesized peptide.



Immunohistochemistry analysis of paraffin-embedded human brain tissue, using TRA-2 alpha Antibody. The picture on the right is blocked with the synthesized peptide.



Western blot analysis of lysates from HUVEC cells, using TRA-2 alpha Antibody. The lane on the right is blocked with the synthesized peptide.