

Synaptotagmin XVI Polyclonal Antibody

Catalog No :	YT4489
Reactivity :	Human;Mouse
Applications :	WB;ELISA
Target :	Synaptotagmin XVI
Gene Name :	SYT16
Protein Name :	Synaptotagmin-16
Human Gene Id :	83851
Human Swiss Prot No :	Q17RD7
Mouse Swiss Prot No :	Q7TN83
Immunogen :	The antiserum was produced against synthesized peptide derived from human SYT16. AA range:231-280
Specificity :	Synaptotagmin XVI Polyclonal Antibody detects endogenous levels of Synaptotagmin XVI protein.
Formulation :	Liquid in PBS containing 50% glycerol, 0.5% BSA and 0.02% sodium azide.
Source :	Polyclonal, Rabbit,IgG
Dilution :	WB 1:500 - 1:2000. ELISA: 1:40000. Not yet tested in other applications.
Purification :	The antibody was affinity-purified from rabbit antiserum by affinity-chromatography using epitope-specific immunogen.
Concentration :	1 mg/ml
Storage Stability :	-15°C to -25°C/1 year(Do not lower than -25°C)
Observed Band :	72kD

Background : function:May be involved in the trafficking and exocytosis of secretory vesicles in non-neuronal tissues. Is Ca(2+)-independent.,sequence caution:Translated as Gln.,similarity:Belongs to the synaptotagmin family.,similarity:Contains 2 C2 domains.,subunit:Homodimer. Can also form heterodimers.,tissue specificity:Expressed in brain.,

Function : function:May be involved in the trafficking and exocytosis of secretory vesicles in non-neuronal tissues. Is Ca(2+)-independent.,sequence caution:Translated as Gln.,similarity:Belongs to the synaptotagmin family.,similarity:Contains 2 C2 domains.,subunit:Homodimer. Can also form heterodimers.,tissue specificity:Expressed in brain.,

Subcellular Location : plasma membrane,

Expression : Expressed in brain.

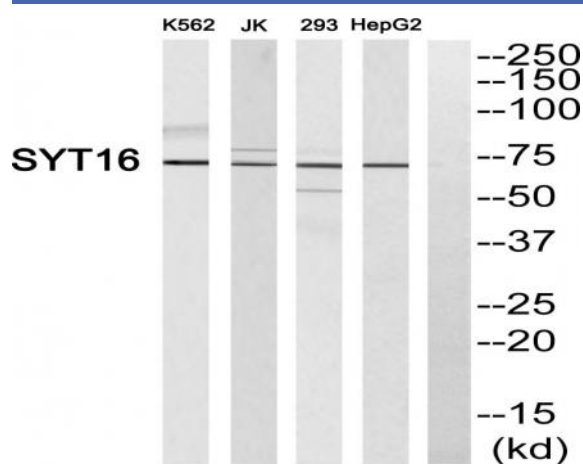
Sort : 16816

No4 : 1

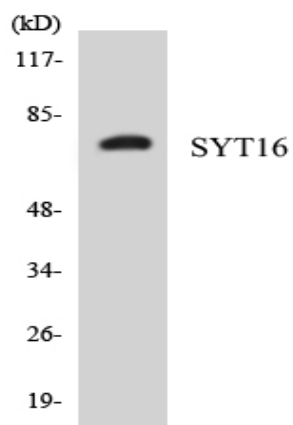
Host : Rabbit

Modifications : Unmodified

Products Images



Western blot analysis of SYT16 Antibody. The lane on the right is blocked with the SYT16 peptide.



Western blot analysis of the lysates from HepG2 cells using SYT16 antibody.