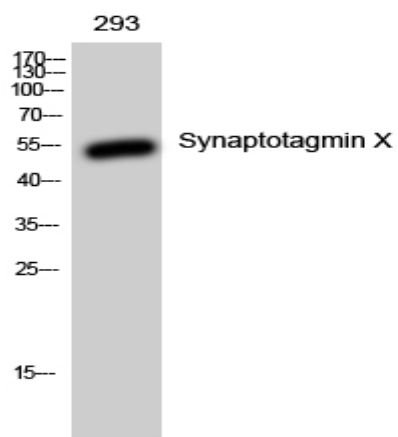


Synaptotagmin X Polyclonal Antibody

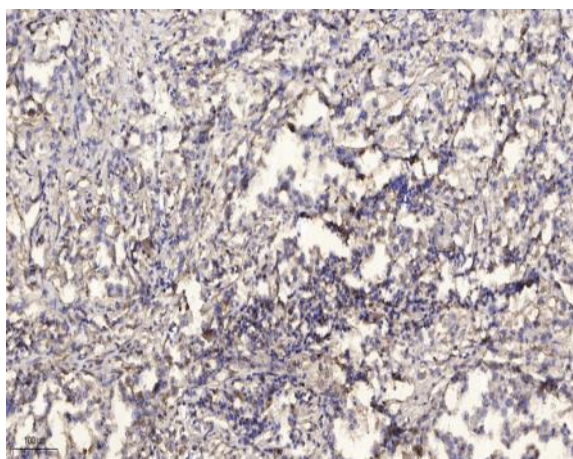
Catalog No :	YT4486
Reactivity :	Human;Mouse;Rat
Applications :	WB;IHC
Target :	Synaptotagmin X
Gene Name :	SYT10
Protein Name :	Synaptotagmin-10
Human Gene Id :	341359
Human Swiss Prot No :	Q6XYQ8
Mouse Gene Id :	54526
Mouse Swiss Prot No :	Q9R0N4
Rat Gene Id :	60567
Rat Swiss Prot No :	O08625
Immunogen :	Synthesized peptide derived from Synaptotagmin X . at AA range: 380-460
Specificity :	Synaptotagmin X Polyclonal Antibody detects endogenous levels of Synaptotagmin X protein.
Formulation :	Liquid in PBS containing 50% glycerol, 0.5% BSA and 0.02% sodium azide.
Source :	Polyclonal, Rabbit,IgG
Dilution :	WB 1:500-2000;IHC 1:50-300
Purification :	The antibody was affinity-purified from rabbit antiserum by affinity-chromatography using epitope-specific immunogen.

Concentration :	1 mg/ml
Storage Stability :	-15°C to -25°C/1 year(Do not lower than -25°C)
Observed Band :	55kD
Background :	cofactor: Binds 3 calcium ions per subunit. The ions are bound to the C2 domains.,function: May be involved in Ca(2+)-dependent exocytosis of secretory vesicles through Ca(2+) and phospholipid binding to the C2 domain or may serve as Ca(2+) sensors in the process of vesicular trafficking and exocytosis.,similarity: Belongs to the synaptotagmin family.,similarity: Contains 2 C2 domains.,subunit: Homodimer. Can also form heterodimers.,tissue specificity: Expressed only in pancreas, lung and kidney.,
Function :	cofactor: Binds 3 calcium ions per subunit. The ions are bound to the C2 domains.,function: May be involved in Ca(2+)-dependent exocytosis of secretory vesicles through Ca(2+) and phospholipid binding to the C2 domain or may serve as Ca(2+) sensors in the process of vesicular trafficking and exocytosis.,similarity: Belongs to the synaptotagmin family.,similarity: Contains 2 C2 domains.,subunit: Homodimer. Can also form heterodimers.,tissue specificity: Expressed only in pancreas, lung and kidney.,
Subcellular Location :	Cytoplasmic vesicle, secretory vesicle membrane ; Single-pass membrane protein . Localizes to neuronal vesicles containing IGF1 that are not enriched at synapses. Does not colocalize with synaptic vesicles or with the Golgi apparatus. .
Expression :	Expressed only in pancreas, lung and kidney.
Sort :	16813
No4 :	1
Host :	Rabbit
Modifications :	Unmodified

Products Images



Western Blot analysis of 293 cells using Synaptotagmin X Polyclonal Antibody



Immunohistochemical analysis of paraffin-embedded human Squamous cell carcinoma of lung. 1, Antibody was diluted at 1:200(4° overnight). 2, Tris-EDTA,pH9.0 was used for antigen retrieval. 3,Secondary antibody was diluted at 1:200(room temperature, 45min).