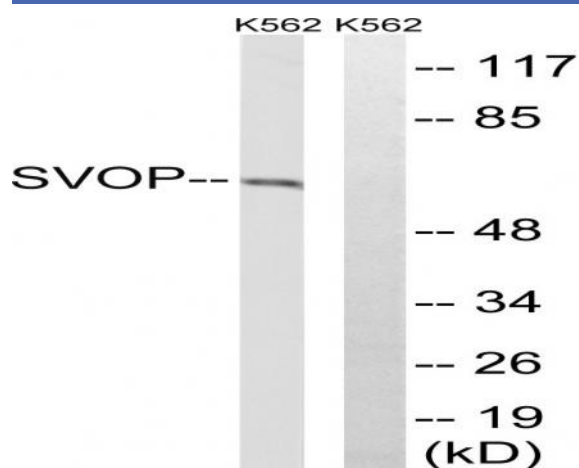


SVOP Polyclonal Antibody

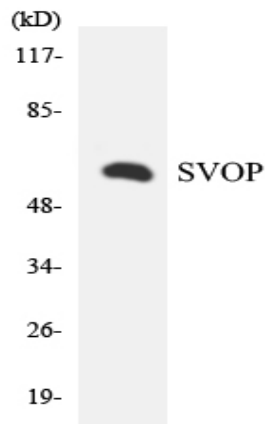
Catalog No :	YT4474
Reactivity :	Human;Mouse;Rat
Applications :	WB;IHC;IF;ELISA
Target :	SVOP
Gene Name :	SVOP
Protein Name :	Synaptic vesicle 2-related protein
Human Gene Id :	55530
Human Swiss Prot No :	Q8N4V2
Mouse Gene Id :	68666
Mouse Swiss Prot No :	Q8BFT9
Rat Gene Id :	171442
Rat Swiss Prot No :	Q9Z2I7
Immunogen :	The antiserum was produced against synthesized peptide derived from human SVOP. AA range:271-320
Specificity :	SVOP Polyclonal Antibody detects endogenous levels of SVOP protein.
Formulation :	Liquid in PBS containing 50% glycerol, 0.5% BSA and 0.02% sodium azide.
Source :	Polyclonal, Rabbit,IgG
Dilution :	WB 1:500 - 1:2000. IHC 1:100 - 1:300. ELISA: 1:40000.. IF 1:50-200
Purification :	The antibody was affinity-purified from rabbit antiserum by affinity-chromatography using epitope-specific immunogen.

Concentration :	1 mg/ml
Storage Stability :	-15°C to -25°C/1 year(Do not lower than -25°C)
Observed Band :	61kD
Background :	similarity:Belongs to the major facilitator superfamily.,
Function :	similarity:Belongs to the major facilitator superfamily.,
Subcellular Location :	Cytoplasmic vesicle, secretory vesicle, synaptic vesicle membrane ; Multi-pass membrane protein .
Expression :	Amygdala,Brain,
Sort :	16780
No4 :	1
Host :	Rabbit
Modifications :	Unmodified

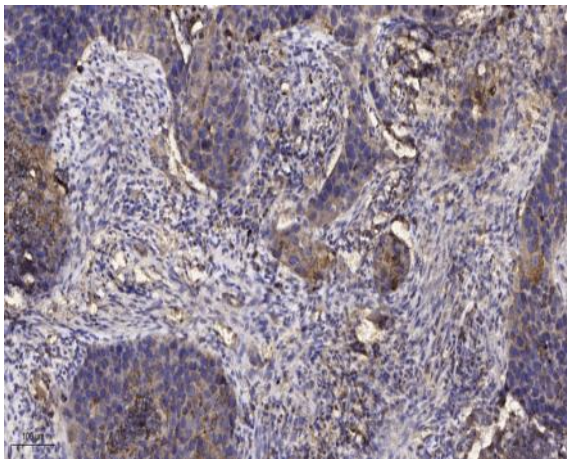
Products Images



Western blot analysis of lysates from K562 cells, using SVOP Antibody. The lane on the right is blocked with the synthesized peptide.



Western blot analysis of the lysates from Jurkat cells using SVOP antibody.



Immunohistochemical analysis of paraffin-embedded human Squamous cell carcinoma of lung. 1, Antibody was diluted at 1:200(4° overnight). 2, Tris-EDTA,pH9.0 was used for antigen retrieval. 3,Secondary antibody was diluted at 1:200(room temperature, 45min).