

## TNF- $\alpha$ Polyclonal Antibody

<b>Catalog No :</b>	YT4689
<b>Reactivity :</b>	Human;Mouse;Rat
<b>Applications :</b>	WB;IHC;IF;ELISA
<b>Target :</b>	TNFA
<b>Fields :</b>	>>Antifolate resistance;>>MAPK signaling pathway;>>Cytokine-cytokine receptor interaction;>>Viral protein interaction with cytokine and cytokine receptor;>>NF-kappa B signaling pathway;>>Sphingolipid signaling pathway;>>mTOR signaling pathway;>>Apoptosis;>>Necroptosis;>>TGF-beta signaling pathway;>>Osteoclast differentiation;>>Antigen processing and presentation;>>Toll-like receptor signaling pathway;>>NOD-like receptor signaling pathway;>>RIG-I-like receptor signaling pathway;>>C-type lectin receptor signaling pathway;>>Hematopoietic cell lineage;>>Natural killer cell mediated cytotoxicity;>>IL-17 signaling pathway;>>T cell receptor signaling pathway;>>Fc epsilon RI signaling pathway;>>TNF signaling pathway;>>Adipocytokine signaling pathway;>>Type II diabetes mellitus;>>Insulin resistance;>>Non-alcoholic fatty liver disease;>>AGE-RAGE signaling pathway in diabetic complications;>>Alcoholic liver disease;>>Type I diabetes mellitus;>>Alzheimer disease;>>Amyotrophic lateral sclerosis;>>P
<b>Gene Name :</b>	TNF TNFA TNFSF2
<b>Protein Name :</b>	Tumor necrosis factor (Cachectin) (TNF-alpha) (Tumor necrosis factor ligand superfamily member 2) (TNF-a) [Cleaved into: Tumor necrosis factor, membrane form (N-terminal fragment) (NTF); Intracellular
<b>Human Gene Id :</b>	7124
<b>Human Swiss Prot No :</b>	P01375
<b>Mouse Gene Id :</b>	21926
<b>Mouse Swiss Prot No :</b>	P06804
<b>Rat Gene Id :</b>	24835
<b>Rat Swiss Prot No :</b>	P16599

<b>Immunogen :</b>	The antiserum was produced against synthesized peptide derived from human TNFA. AA range:141-190
<b>Specificity :</b>	TNF- $\alpha$ Polyclonal Antibody detects endogenous levels of TNF- $\alpha$ protein.
<b>Formulation :</b>	Liquid in PBS containing 50% glycerol, 0.5% BSA and 0.02% sodium azide.
<b>Source :</b>	Polyclonal, Rabbit,IgG
<b>Dilution :</b>	WB 1:500 - 1:2000. IHC: 1:100-300 ELISA: 1:20000. IF 1:100-300 Not yet tested in other applications.
<b>Purification :</b>	The antibody was affinity-purified from rabbit antiserum by affinity-chromatography using epitope-specific immunogen.
<b>Concentration :</b>	1 mg/ml
<b>Storage Stability :</b>	-15°C to -25°C/1 year(Do not lower than -25°C)
<b>Observed Band :</b>	16kD
<b>Cell Pathway :</b>	MAPK_ERK_Growth;MAPK_G_Protein;Cytokine-cytokine receptor interaction;Apoptosis_Inhibition;Apoptosis_Mitochondrial;Apoptosis_Overview;TGF-beta;Toll_Like;NOD-like receptor;RIG-I-like receptor;Hematopoi
<b>Background :</b>	This gene encodes a multifunctional proinflammatory cytokine that belongs to the tumor necrosis factor (TNF) superfamily. This cytokine is mainly secreted by macrophages. It can bind to, and thus functions through its receptors TNFRSF1A/TNFR1 and TNFRSF1B/TNFR. This cytokine is involved in the regulation of a wide spectrum of biological processes including cell proliferation, differentiation, apoptosis, lipid metabolism, and coagulation. This cytokine has been implicated in a variety of diseases, including autoimmune diseases, insulin resistance, and cancer. Knockout studies in mice also suggested the neuroprotective function of this cytokine. [provided by RefSeq, Jul 2008],
<b>Function :</b>	disease:Cachexia accompanies a variety of diseases, including cancer and infection, and is characterized by general ill health and malnutrition.,disease:Genetic variations in TNF are associated with susceptibility to hepatitis B virus infection (HBV infection) [MIM:610424]. Approximately one third of all cases of cirrhosis and half of all cases of hepatocellular carcinoma can be attributed to chronic HBV infection. HBV infection may result in subclinical or asymptomatic infection, acute self-limited hepatitis, or fulminant hepatitis requiring liver transplantation.,disease:Genetic variations in TNF are associated with susceptibility to psoriatic arthritis [MIM:607507]. Psoriasis is a chronic inflammatory dermatosis that affects approximately 2% of the population. It is characterized by red, scaly skin lesions that are usually found on the scalp,

elbows, and knees, and may be associated w

**Subcellular Location :**

Cell membrane ; Single-pass type II membrane protein .; [Tumor necrosis factor, membrane form]: Membrane; Single-pass type II membrane protein.; [Tumor necrosis factor, soluble form]: Secreted .; [C-domain 1]: Secreted.; [C-domain 2]: Secreted.

**Expression :**

Blood,Peripheral blood leukocyte,Placenta,Prostatic carcinoma,

**Tag :**

orthogonal,hot

**Sort :**

1

**No3 :**

ab215188

**No4 :**

1

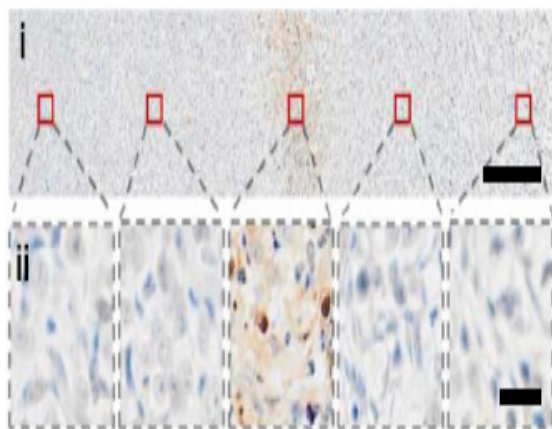
**Host :**

Rabbit

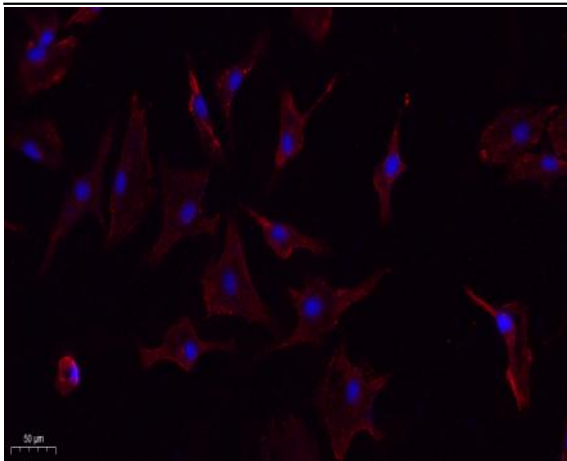
**Modifications :**

Unmodified

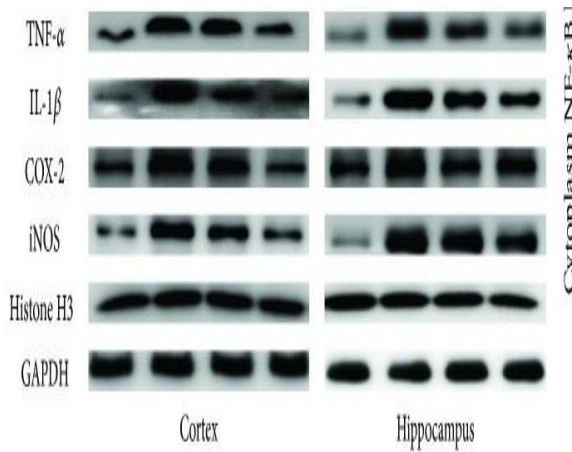
## Products Images



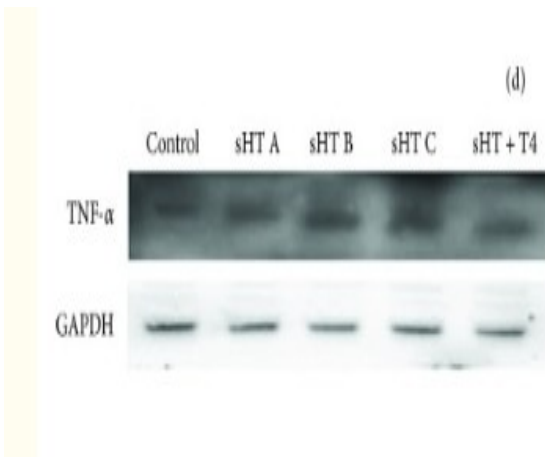
A biodegradable, flexible photonic patch for in vivo phototherapy.  
Yang Zhu IHC Rat 1:200 heart



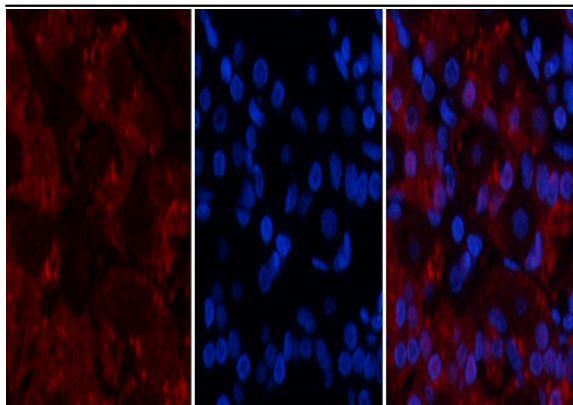
Immunofluorescence analysis of A549. 1,primary Antibody(red) was diluted at 1:200(4°C overnight). 2, Goat Anti Rabbit IgG (H&L) - Alexa Fluor 594 Secondary antibody was diluted at 1:1000(room temperature, 50min).3, Picture B: DAPI(blue) 10min.



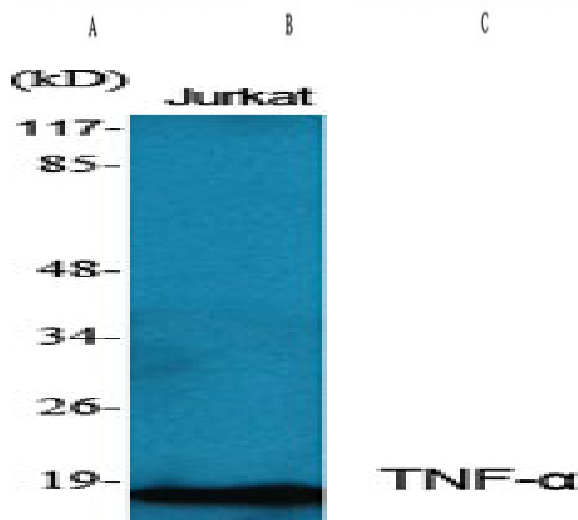
Ma, Yingjuan, et al. "Flavonoid-Rich Ethanol Extract from the Leaves of Diospyros kaki Attenuates D-Galactose-Induced Oxidative Stress and Neuroinflammation-Mediated Brain Aging in Mice." *Oxidative medicine and cellular longevity* 2018 (2018).



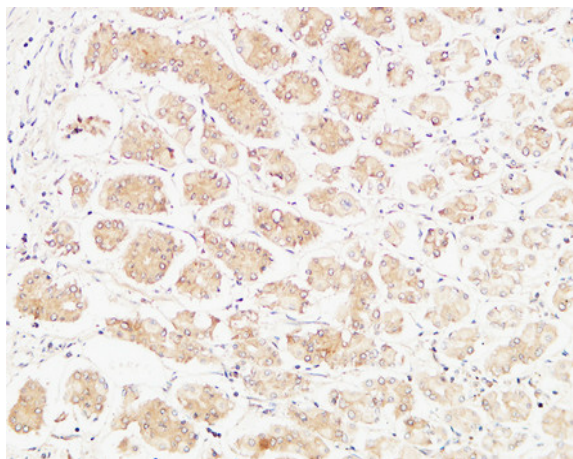
Chen, Xuedi, et al. "The Change of Left Ventricular Function in Rats with Subclinical Hypothyroid and the Effects of Thyroxine Replacement." *International journal of endocrinology* 2018 (2018).



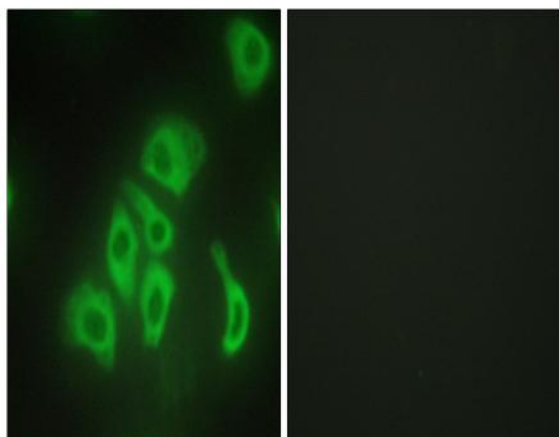
Immunofluorescence analysis of human-stomach tissue. 1, TNF- $\alpha$  Polyclonal Antibody (red) was diluted at 1:200 (4 °C, overnight). 2, Cy3 labeled Secondary antibody was diluted at 1:300 (room temperature, 50min). 3, Picture B: DAPI (blue) 10min. Picture A: Target. Picture B: DAPI. Picture C: merge of A+B



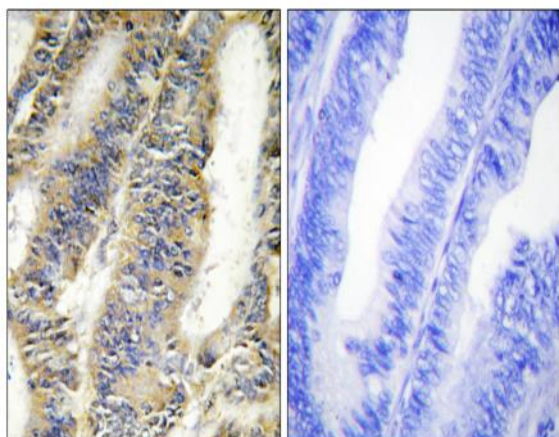
Western Blot analysis of various cells using TNF- $\alpha$  Polyclonal Antibody. Secondary antibody (catalog#:RS0002) was diluted at 1:20000



Immunohistochemical analysis of paraffin-embedded Human stomach. 1, Antibody was diluted at 1:100 (4 °C overnight). 2, High-pressure and temperature EDTA, pH 8.0 was used for antigen retrieval. 3, Secondary antibody was diluted at 1:200 (room temperature, 30min).



Immunofluorescence analysis of HepG2 cells, using TNFA Antibody. The picture on the right is blocked with the synthesized peptide.



Immunohistochemistry analysis of paraffin-embedded human colon carcinoma tissue, using TNFA Antibody. The picture on the right is blocked with the synthesized peptide.