

Stlp1 Polyclonal Antibody

Catalog No :	YT4459
Reactivity :	Human;Rat;Mouse;
Applications :	WB;IHC
Target :	Stlp1
Gene Name :	ELP2
Protein Name :	Elongator complex protein 2
Human Gene Id :	55250
Human Swiss Prot No :	Q6IA86
Mouse Swiss Prot No :	Q91WG4
Immunogen :	The antiserum was produced against synthesized peptide derived from human ELP2. AA range:771-820
Specificity :	Stlp1 Polyclonal Antibody detects endogenous levels of Stlp1 protein.
Formulation :	Liquid in PBS containing 50% glycerol, 0.5% BSA and 0.02% sodium azide.
Source :	Polyclonal, Rabbit,IgG
Dilution :	WB 1:500-2000;IHC 1:50-300
Purification :	The antibody was affinity-purified from rabbit antiserum by affinity-chromatography using epitope-specific immunogen.
Concentration :	1 mg/ml
Storage Stability :	-15°C to -25°C/1 year(Do not lower than -25°C)
Observed Band :	93kD

Background : The protein encoded by this gene is a core subunit of the elongator complex, a histone acetyltransferase complex that associates with RNA polymerase II. In addition to histone acetylation, the encoded protein effects transcriptional elongation and may help remodel chromatin. [provided by RefSeq, May 2016],

Function : function:Acts as subunit of the RNA polymerase II elongator complex, which is a histone acetyltransferase component of the RNA polymerase II (Pol II) holoenzyme and is involved in transcriptional elongation. Elongator may play a role in chromatin remodeling and is involved in acetylation of histones H3 and probably H4.,function:Regulates the ligand-dependent activation of STAT3.,similarity:Belongs to the WD repeat ELP2 family.,similarity:Contains 14 WD repeats.,subunit:Component of the RNA polymerase II elongator complex (Elongator), which consists of IKBKAP/ELP1, STIP1/ELP2, ELP3, ELP4, and two yet unidentified proteins, p30 and p38. Elongator associates with the C-terminal domain (CTD) of Pol II largest subunit. Interacts with STAT3 and JAKs.,

Subcellular Location : Cytoplasm . Nucleus .

Expression : Hematopoietic,Liver,Ovary,Uterus,

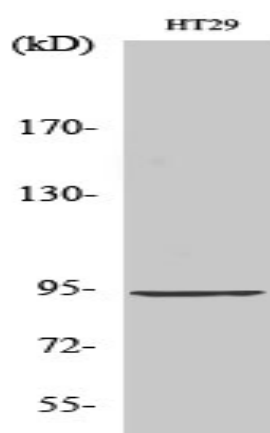
Sort : 16744

No4 : 1

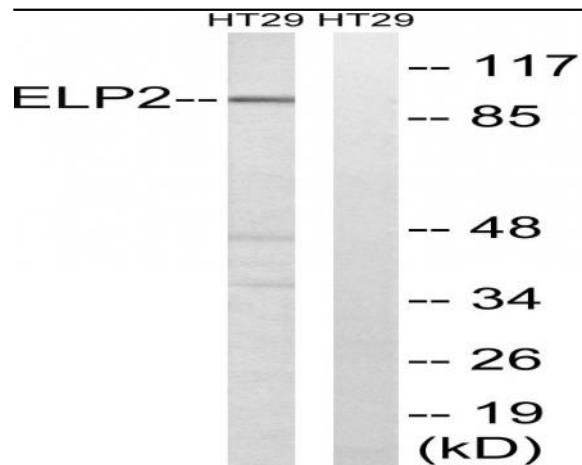
Host : Rabbit

Modifications : Unmodified

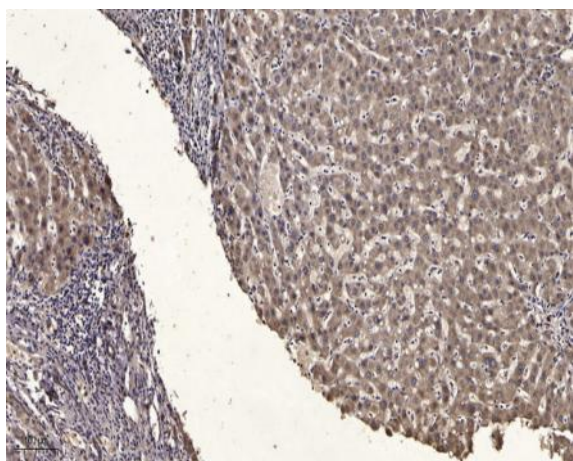
Products Images



Western Blot analysis of various cells using Stlp1 Polyclonal Antibody



Western blot analysis of lysates from HT-29 cells, using ELP2 Antibody. The lane on the right is blocked with the synthesized peptide.



Immunohistochemical analysis of paraffin-embedded human liver cancer. 1, Antibody was diluted at 1:200(4° overnight). 2, Tris-EDTA,pH9.0 was used for antigen retrieval. 3,Secondary antibody was diluted at 1:200(room temperature, 45min).