

STEAP1 Polyclonal Antibody

Catalog No :	YT4457
Reactivity :	Human;Mouse
Applications :	WB;IHC;IF;ELISA
Target :	STEAP1
Fields :	>>Mineral absorption
Gene Name :	STEAP1
Protein Name :	Metalloreductase STEAP1
Human Gene Id :	26872
Human Swiss Prot No :	Q9UHE8
Mouse Swiss Prot No :	Q9CWR7
Immunogen :	The antiserum was produced against synthesized peptide derived from human STEAP1. AA range:31-80
Specificity :	STEAP1 Polyclonal Antibody detects endogenous levels of STEAP1 protein.
Formulation :	Liquid in PBS containing 50% glycerol, 0.5% BSA and 0.02% sodium azide.
Source :	Polyclonal, Rabbit,IgG
Dilution :	WB 1:500 - 1:2000. IHC 1:100 - 1:300. ELISA: 1:10000.. IF 1:50-200
Purification :	The antibody was affinity-purified from rabbit antiserum by affinity-chromatography using epitope-specific immunogen.
Concentration :	1 mg/ml
Storage Stability :	-15°C to -25°C/1 year(Do not lower than -25°C)

Observed Band : 36kD

Background : This gene is predominantly expressed in prostate tissue, and is found to be upregulated in multiple cancer cell lines. The gene product is predicted to be a six-transmembrane protein, and was shown to be a cell surface antigen significantly expressed at cell-cell junctions. [provided by RefSeq, Jul 2008],

Function : cofactor:FAD.,function:Metalloreductase that has the ability to reduce both Fe(3+) to Fe(2+) and Cu(2+) to Cu(1+). Uses NAD(+) as acceptor.,similarity:Belongs to the STEAP family.,similarity:Contains 1 ferric oxidoreductase domain.,tissue specificity:Ubiquitously expressed. Highly expressed in prostate tumors.,

Subcellular Location : Endosome membrane ; Multi-pass membrane protein .

Expression : Ubiquitously expressed. Highly expressed in prostate tumors.

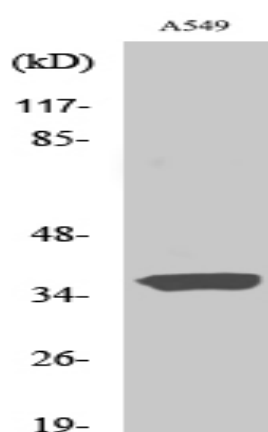
Sort : 16741

No4 : 1

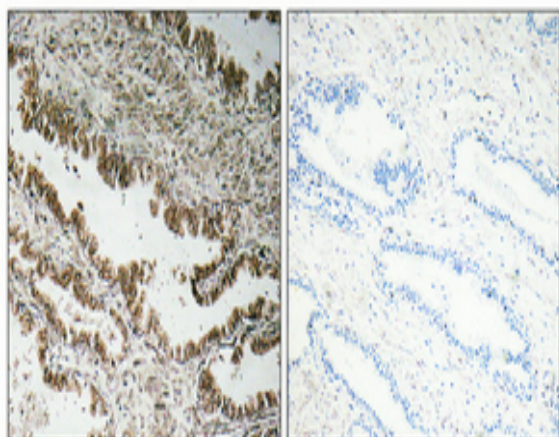
Host : Rabbit

Modifications : Unmodified

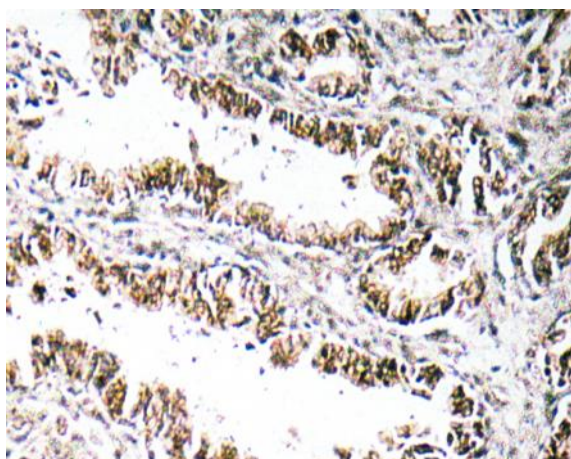
Products Images



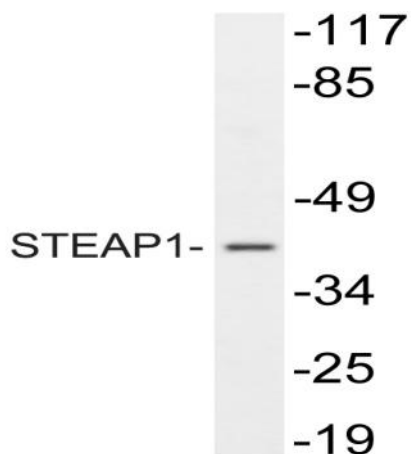
Western Blot analysis of various cells using STEAP1 Polyclonal Antibody



Immunohistochemical analysis of paraffin-embedded Human prostate cancer. Antibody was diluted at 1:100(4° overnight). High-pressure and temperature Tris-EDTA,pH8.0 was used for antigen retrieval. Negative contrl (right) obtained from antibody was pre-absorbed by immunogen peptide.



Immunohistochemistry analysis of STEAP1 antibody in paraffin-embedded human prostate carcinoma tissue.



Western blot analysis of lysate from A549, using STEAP1 antibody.