

**StARD10 Polyclonal Antibody**

<b>Catalog No :</b>	YT4437
<b>Reactivity :</b>	Human;Mouse;Rat
<b>Applications :</b>	WB;ELISA;IHC
<b>Target :</b>	StARD10
<b>Gene Name :</b>	STARD10
<b>Protein Name :</b>	PCTP-like protein
<b>Human Gene Id :</b>	10809
<b>Human Swiss Prot No :</b>	Q9Y365
<b>Mouse Gene Id :</b>	56018
<b>Mouse Swiss Prot No :</b>	Q9JMD3
<b>Immunogen :</b>	Synthesized peptide derived from the Internal region of human StARD10.
<b>Specificity :</b>	StARD10 Polyclonal Antibody detects endogenous levels of StARD10 protein.
<b>Formulation :</b>	Liquid in PBS containing 50% glycerol, 0.5% BSA and 0.02% sodium azide.
<b>Source :</b>	Polyclonal, Rabbit,IgG
<b>Dilution :</b>	WB 1:500-2000;IHC 1:50-300; ELISA 2000-20000
<b>Purification :</b>	The antibody was affinity-purified from rabbit antiserum by affinity-chromatography using epitope-specific immunogen.
<b>Concentration :</b>	1 mg/ml
<b>Storage Stability :</b>	-15°C to -25°C/1 year(Do not lower than -25°C)

**Observed Band :** 33kD

**Background :** function:May play specific roles in sperm maturation or fertilization.,sequence caution:Various sequencing problems as well as a translation in a wrong frame.,similarity:Contains 1 START domain.,

**Function :** function:May play specific roles in sperm maturation or fertilization.,sequence caution:Various sequencing problems as well as a translation in a wrong frame.,similarity:Contains 1 START domain.,

**Subcellular Location :** Cell projection, cilium, flagellum . Cytoplasm . Membrane . In testis was predominantly detected at the flagella of elongated spermatids, with a strong signal also found at the tail of epididymal sperm (By similarity). Mainly cytosolic. .

**Expression :** Colon carcinoma,Uterus,

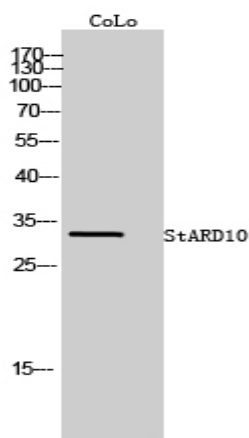
**Sort :** 16658

**No4 :** 1

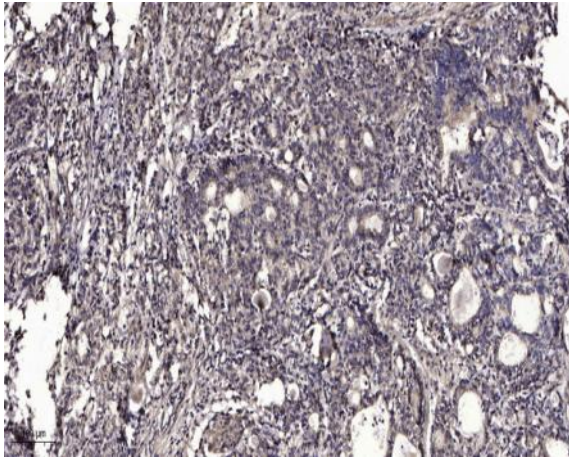
**Host :** Rabbit

**Modifications :** Unmodified

## Products Images



Western Blot analysis of CoLo cells using StARD10 Polyclonal Antibody



Immunohistochemical analysis of paraffin-embedded human Gastric adenocarcinoma. 1, Antibody was diluted at 1:200(4° overnight). 2, Tris-EDTA,pH9.0 was used for antigen retrieval. 3,Secondary antibody was diluted at 1:200(room temperature, 45min).