

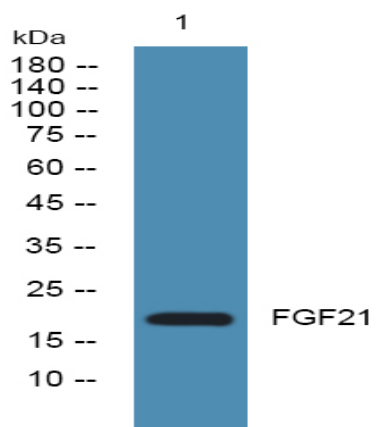
## FGF21 Polyclonal Antibody

<b>Catalog No :</b>	YN0199
<b>Reactivity :</b>	Human;Mouse
<b>Applications :</b>	WB;ELISA
<b>Target :</b>	FGF21
<b>Fields :</b>	>>MAPK signaling pathway;>>Ras signaling pathway;>>Rap1 signaling pathway;>>Calcium signaling pathway;>>PI3K-Akt signaling pathway;>>Thermogenesis;>>Regulation of actin cytoskeleton;>>Pathways in cancer;>>Melanoma;>>Breast cancer;>>Gastric cancer
<b>Gene Name :</b>	FGF21 UNQ31115/PRO10196
<b>Protein Name :</b>	Fibroblast growth factor 21 (FGF-21)
<b>Human Gene Id :</b>	26291
<b>Human Swiss Prot No :</b>	Q9NSA1
<b>Mouse Swiss Prot No :</b>	Q9JJN1
<b>Immunogen :</b>	Synthesized peptide derived from human protein . at AA range: 90-170
<b>Specificity :</b>	FGF21 Polyclonal Antibody detects endogenous levels of protein.
<b>Formulation :</b>	Liquid in PBS containing 50% glycerol, and 0.02% sodium azide.
<b>Source :</b>	Polyclonal, Rabbit,IgG
<b>Dilution :</b>	WB 1:500-2000 ELISA 1:5000-20000
<b>Purification :</b>	The antibody was affinity-purified from rabbit antiserum by affinity-chromatography using epitope-specific immunogen.
<b>Concentration :</b>	1 mg/ml

---

<b>Storage Stability :</b>	<u>-15°C to -25°C/1 year(Do not lower than -25°C)</u>
<b>Observed Band :</b>	<u>22kD</u>
<b>Cell Pathway :</b>	<u>MAPK_ERK_Growth;MAPK_G_Protein;Regulates Actin and Cytoskeleton;Pathways in cancer;Melanoma;</u>
<b>Background :</b>	<u>This gene encodes a member of the fibroblast growth factor (FGF) family. FGF family members possess broad mitogenic and cell survival activities and are involved in a variety of biological processes. This protein is a secreted endocrine factor that functions as a major metabolic regulator. The encoded protein stimulates the uptake of glucose in adipose tissue. [provided by RefSeq, Mar 2016],</u>
<b>Function :</b>	<u>function:Stimulates glucose uptake in differentiated adipocytes via the induction of glucose transporter SLC2A1/GLUT1, but not SLC2A4/GLUT4, expression.,similarity:Belongs to the heparin-binding growth factors family.,</u>
<b>Subcellular Location :</b>	<u>Secreted .</u>
<b>Expression :</b>	<u>Lung,</u>
<b>Tag :</b>	<u>hot</u>
<b>Sort :</b>	<u>19132</u>
<b>No4 :</b>	<u>1</u>
<b>Host :</b>	<u>Rabbit</u>
<b>Modifications :</b>	<u>Unmodified</u>

## Products Images



Western blot analysis of lysates from KB cells, primary antibody was diluted at 1:1000, 4° over night