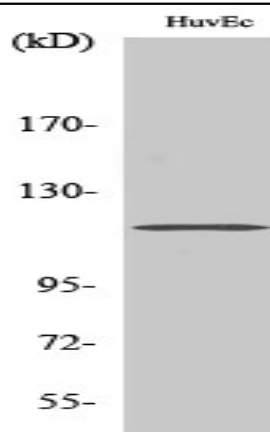


ST18 Polyclonal Antibody

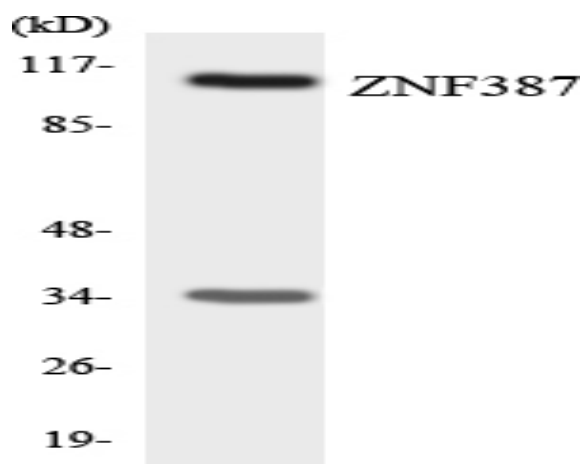
Catalog No :	YT4431
Reactivity :	Human;Rat;Mouse;
Applications :	WB;IHC;IF;ELISA
Target :	ST18
Gene Name :	ST18
Protein Name :	Suppression of tumorigenicity 18 protein
Human Gene Id :	9705
Human Swiss Prot No :	O60284
Mouse Swiss Prot No :	Q80TY4
Immunogen :	The antiserum was produced against synthesized peptide derived from human ZNF387. AA range:41-90
Specificity :	ST18 Polyclonal Antibody detects endogenous levels of ST18 protein.
Formulation :	Liquid in PBS containing 50% glycerol, 0.5% BSA and 0.02% sodium azide.
Source :	Polyclonal, Rabbit,IgG
Dilution :	WB 1:500 - 1:2000. IHC 1:100 - 1:300. IF 1:200 - 1:1000. ELISA: 1:40000. Not yet tested in other applications.
Purification :	The antibody was affinity-purified from rabbit antiserum by affinity-chromatography using epitope-specific immunogen.
Concentration :	1 mg/ml
Storage Stability :	-15°C to -25°C/1 year(Do not lower than -25°C)
Observed Band :	115kD

Background :	function:Repressor that binds to DNA sequences containing a bipartite element consisting of a direct repeat of the sequence 5'-AAAGTTT-3' separated by 2-9 nucleotides. Represses basal transcription activity from target promoters (By similarity). Inhibits colony formation in cultured breast cancer cells.,similarity:Contains 6 C2HC-type zinc fingers.,tissue specificity:Detected at low levels in heart, liver, kidney, skeletal muscel, pancreas, testis, ovary and prostate. Detected at even lower levels in mammary epithelial cells and breast cancer cells.,
Function :	function:Repressor that binds to DNA sequences containing a bipartite element consisting of a direct repeat of the sequence 5'-AAAGTTT-3' separated by 2-9 nucleotides. Represses basal transcription activity from target promoters (By similarity). Inhibits colony formation in cultured breast cancer cells.,similarity:Contains 6 C2HC-type zinc fingers.,tissue specificity:Detected at low levels in heart, liver, kidney, skeletal muscel, pancreas, testis, ovary and prostate. Detected at even lower levels in mammary epithelial cells and breast cancer cells.,
Subcellular Location :	Nucleus .
Expression :	Detected at low levels in heart, liver, kidney, skeletal muscle, pancreas, testis, ovary and prostate. Detected at even lower levels in mammary epithelial cells and breast cancer cells.
Tag :	hot
Sort :	16643
No4 :	1
Host :	Rabbit
Modifications :	Unmodified

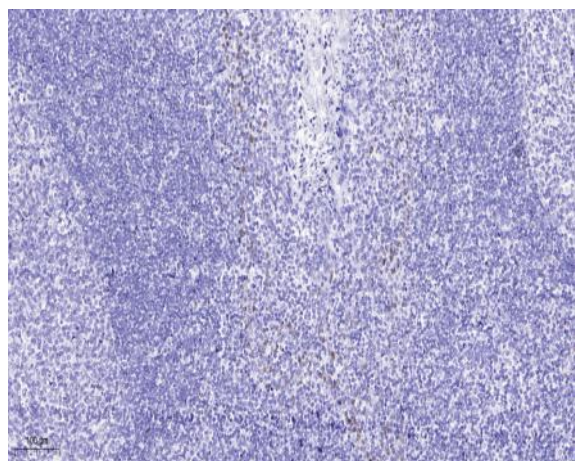
Products Images



Western Blot analysis of various cells using ST18 Polyclonal Antibody cells nucleus extracted by Minute TM Cytoplasmic and Nuclear Fractionation kit (SC-003, Inventbiotech, MN, USA).



Western blot analysis of the lysates from COLO205 cells using ZNF387 antibody.



Immunohistochemical analysis of paraffin-embedded human tonsil. 1, Antibody was diluted at 1:200 (4° overnight). 2, Tris-EDTA, pH 9.0 was used for antigen retrieval. 3, Secondary antibody was diluted at 1:200 (room temperature, 45min).