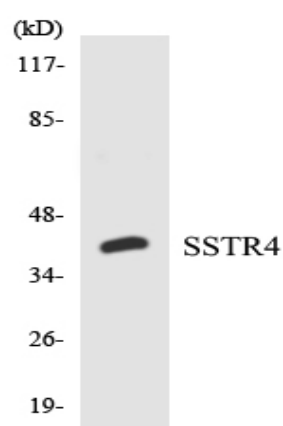
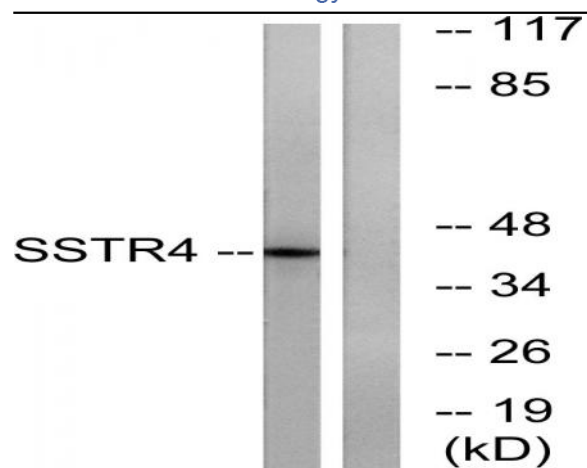


SSTR4 Polyclonal Antibody

Catalog No :	YT4430
Reactivity :	Human;Mouse;Rat
Applications :	WB;ELISA
Target :	SSTR4
Fields :	>>Neuroactive ligand-receptor interaction
Gene Name :	SSTR4
Protein Name :	Somatostatin receptor type 4
Human Gene Id :	6754
Human Swiss Prot No :	P31391
Mouse Swiss Prot No :	P49660
Rat Gene Id :	25555
Rat Swiss Prot No :	P30937
Immunogen :	The antiserum was produced against synthesized peptide derived from human SSTR4. AA range:155-204
Specificity :	SSTR4 Polyclonal Antibody detects endogenous levels of SSTR4 protein.
Formulation :	Liquid in PBS containing 50% glycerol, 0.5% BSA and 0.02% sodium azide.
Source :	Polyclonal, Rabbit,IgG
Dilution :	WB 1:500 - 1:2000. ELISA: 1:20000. Not yet tested in other applications.
Purification :	The antibody was affinity-purified from rabbit antiserum by affinity-chromatography using epitope-specific immunogen.

Concentration :	1 mg/ml
Storage Stability :	-15°C to -25°C/1 year(Do not lower than -25°C)
Observed Band :	42kD
Cell Pathway :	Neuroactive ligand-receptor interaction;
Background :	Somatostatin acts at many sites to inhibit the release of many hormones and other secretory proteins. The biologic effects of somatostatin are probably mediated by a family of G protein-coupled receptors that are expressed in a tissue-specific manner. SSTR4 is a member of the superfamily of receptors having seven transmembrane segments and is expressed in highest levels in fetal and adult brain and lung. [provided by RefSeq, Jul 2008],
Function :	function:Receptor for somatostatin-14. The activity of this receptor is mediated by G proteins which inhibits adenylyl cyclase. It is functionally coupled not only to inhibition of adenylyl cyclase, but also to activation of both arachidonate release and mitogen-activated protein (MAP) kinase cascade. Mediates antiproliferative action of somatostatin in tumor cells.,similarity:Belongs to the G-protein coupled receptor 1 family.,tissue specificity:Specifically expressed in fetal and adult brain, lung tissue, stomach, and in lesser quantities in the kidney, pituitary and adrenals.,
Subcellular Location :	Cell membrane; Multi-pass membrane protein.
Expression :	Specifically expressed in fetal and adult brain, lung tissue, stomach, and in lesser quantities in the kidney, pituitary and adrenals.
Sort :	16641
No4 :	1
Host :	Rabbit
Modifications :	Unmodified

Products Images



Western blot analysis of the lysates from HepG2 cells using SSTR4 antibody.