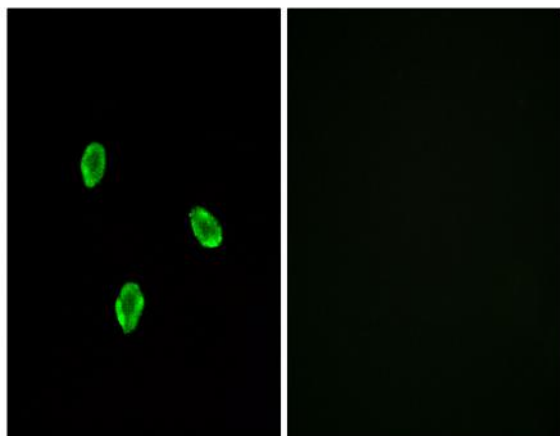


SSTR1 Polyclonal Antibody

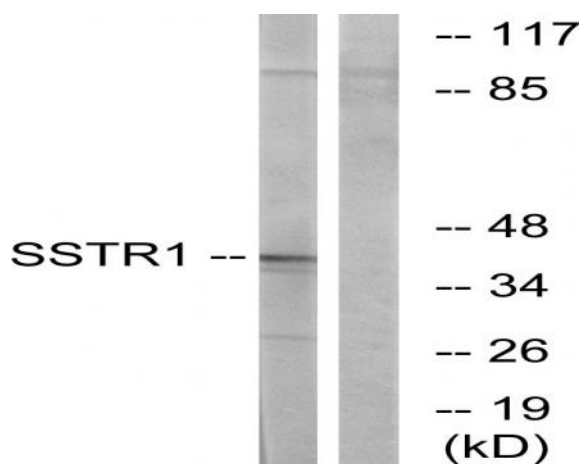
Catalog No :	YT4429
Reactivity :	Human;Mouse;Rat;Monkey
Applications :	WB;IF;ELISA
Target :	SSTR1
Fields :	>>cAMP signaling pathway;>>Neuroactive ligand-receptor interaction;>>Growth hormone synthesis, secretion and action
Gene Name :	SSTR1
Protein Name :	Somatostatin receptor type 1
Human Gene Id :	6751
Human Swiss Prot No :	P30872
Mouse Gene Id :	20605
Mouse Swiss Prot No :	P30873
Rat Gene Id :	25033
Rat Swiss Prot No :	P28646
Immunogen :	The antiserum was produced against synthesized peptide derived from human SSTR1. AA range:9-58
Specificity :	SSTR1 Polyclonal Antibody detects endogenous levels of SSTR1 protein.
Formulation :	Liquid in PBS containing 50% glycerol, 0.5% BSA and 0.02% sodium azide.
Source :	Polyclonal, Rabbit,IgG
Dilution :	WB 1:500 - 1:2000. IF 1:200 - 1:1000. ELISA: 1:20000. Not yet tested in other applications.

Purification :	The antibody was affinity-purified from rabbit antiserum by affinity-chromatography using epitope-specific immunogen.
Concentration :	1 mg/ml
Storage Stability :	-15°C to -25°C/1 year(Do not lower than -25°C)
Observed Band :	43kD
Cell Pathway :	Neuroactive ligand-receptor interaction;
Background :	<p>Somatostatins are peptide hormones that regulate diverse cellular functions such as neurotransmission, cell proliferation, and endocrine signaling as well as inhibiting the release of many hormones and other secretory proteins. Somatostatin has two active forms of 14 and 28 amino acids. The biological effects of somatostatins are mediated by a family of G-protein coupled somatostatin receptors that are expressed in a tissue-specific manner. The protein encoded by this gene is a member of the superfamily of somatostatin receptors having seven transmembrane segments. Somatostatin receptors form homodimers and heterodimers with other members of the superfamily as well as with other G-protein coupled receptors and receptor tyrosine kinases. This somatostatin receptor has greater affinity for somatostatin-14 than -28. [provided by RefSeq, Jul 2012],</p>
Function :	<p>function:Receptor for somatostatin with higher affinity for somatostatin-14 than -28. This receptor is coupled via pertussis toxin sensitive G proteins to inhibition of adenylyl cyclase. In addition it stimulates phosphotyrosine phosphatase and Na(+)/H(+) exchanger via pertussis toxin insensitive G proteins.,similarity:Belongs to the G-protein coupled receptor 1 family.,subunit:Interacts with SKB1.,tissue specificity:Fetal kidney, fetal liver, and adult pancreas, brain, lung, jejunum and stomach.,</p>
Subcellular Location :	Cell membrane; Multi-pass membrane protein.
Expression :	Fetal kidney, fetal liver, and adult pancreas, brain, lung, jejunum and stomach.
Sort :	16639
No4 :	1
Host :	Rabbit
Modifications :	Unmodified

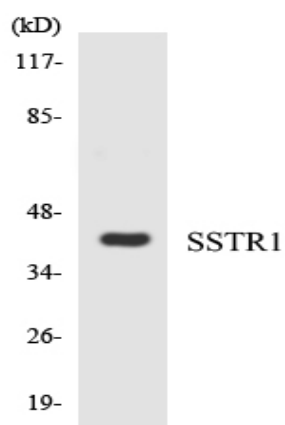
Products Images



Immunofluorescence analysis of A549 cells, using SSTR1 Antibody. The picture on the right is blocked with the synthesized peptide.



Western blot analysis of lysates from COS7 cells, using SSTR1 Antibody. The lane on the right is blocked with the synthesized peptide.



Western blot analysis of the lysates from COLO205 cells using SSTR1 antibody.