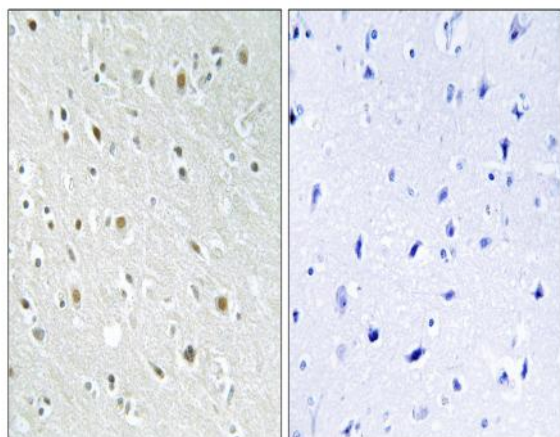


SSBP2 Polyclonal Antibody

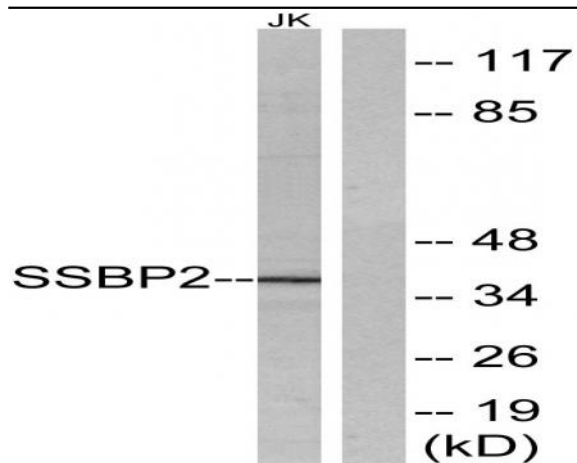
Catalog No :	YT4427
Reactivity :	Human;Mouse
Applications :	WB;IHC;IF;ELISA
Target :	SSBP2
Gene Name :	SSBP2
Protein Name :	Single-stranded DNA-binding protein 2
Human Gene Id :	23635
Human Swiss Prot No :	P81877
Mouse Gene Id :	66970
Mouse Swiss Prot No :	Q9CYZ8
Immunogen :	The antiserum was produced against synthesized peptide derived from human SSBP2. AA range:10-59
Specificity :	SSBP2 Polyclonal Antibody detects endogenous levels of SSBP2 protein.
Formulation :	Liquid in PBS containing 50% glycerol, 0.5% BSA and 0.02% sodium azide.
Source :	Polyclonal, Rabbit,IgG
Dilution :	WB 1:500 - 1:2000. IHC 1:100 - 1:300. ELISA: 1:10000.. IF 1:50-200
Purification :	The antibody was affinity-purified from rabbit antiserum by affinity-chromatography using epitope-specific immunogen.
Concentration :	1 mg/ml
Storage Stability :	-15°C to -25°C/1 year(Do not lower than -25°C)

Observed Band : 38kD**Background :** This gene encodes a subunit of a protein complex that interacts with single-stranded DNA and is involved in the DNA damage response and maintenance of genome stability. The encoded protein may also play a role in telomere repair. A variant of this gene may be associated with survival in human glioblastoma patients. [provided by RefSeq, Sep 2016],**Function :** similarity:Contains 1 LisH domain.,tissue specificity:Ubiquitous.,**Subcellular Location :** Nucleus .**Expression :** Ubiquitous.**Sort :** 16635**No4 :** 1**Host :** Rabbit**Modifications :** Unmodified

Products Images



Immunohistochemistry analysis of paraffin-embedded human brain tissue, using SSBP2 Antibody. The picture on the right is blocked with the synthesized peptide.



Western blot analysis of lysates from Jurkat cells, using SSBP2 Antibody. The lane on the right is blocked with the synthesized peptide.